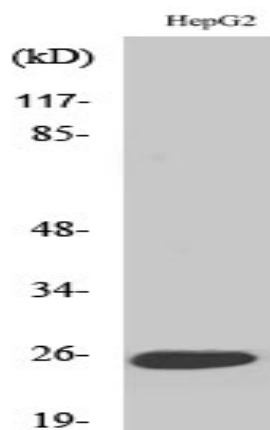


## LT- $\beta$ Polyclonal Antibody

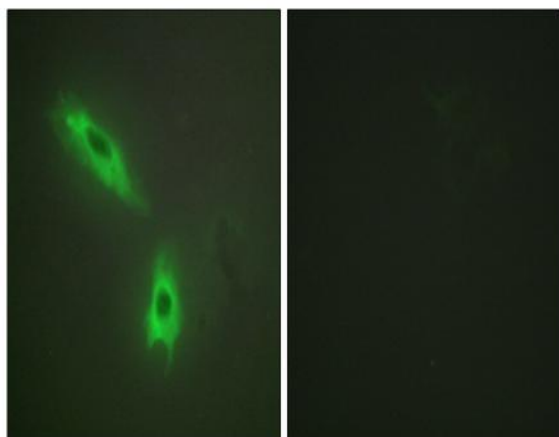
<b>Catalog No :</b>	YT2601
<b>Reactivity :</b>	Human;Mouse
<b>Applications :</b>	WB;IF;ELISA
<b>Target :</b>	LT- $\beta$
<b>Fields :</b>	>>Cytokine-cytokine receptor interaction;>>NF-kappa B signaling pathway;>>Rheumatoid arthritis
<b>Gene Name :</b>	LTB
<b>Protein Name :</b>	Lymphotoxin-beta
<b>Human Gene Id :</b>	4050
<b>Human Swiss Prot No :</b>	Q06643
<b>Mouse Gene Id :</b>	16994
<b>Mouse Swiss Prot No :</b>	P41155
<b>Immunogen :</b>	The antiserum was produced against synthesized peptide derived from human TNFC. AA range:181-230
<b>Specificity :</b>	LT- $\beta$ Polyclonal Antibody detects endogenous levels of LT- $\beta$ protein.
<b>Formulation :</b>	Liquid in PBS containing 50% glycerol, 0.5% BSA and 0.02% sodium azide.
<b>Source :</b>	Polyclonal, Rabbit,IgG
<b>Dilution :</b>	WB 1:500 - 1:2000. IF 1:200 - 1:1000. ELISA: 1:10000. Not yet tested in other applications.
<b>Purification :</b>	The antibody was affinity-purified from rabbit antiserum by affinity-chromatography using epitope-specific immunogen.

<b>Concentration :</b>	1 mg/ml
<b>Storage Stability :</b>	-15°C to -25°C/1 year(Do not lower than -25°C)
<b>Observed Band :</b>	22kD
<b>Cell Pathway :</b>	Cytokine-cytokine receptor interaction;
<b>Background :</b>	Lymphotoxin beta is a type II membrane protein of the TNF family. It anchors lymphotoxin-alpha to the cell surface through heterotrimer formation. The predominant form on the lymphocyte surface is the lymphotoxin-alpha 1/beta 2 complex (e.g. 1 molecule alpha/2 molecules beta) and this complex is the primary ligand for the lymphotoxin-beta receptor. The minor complex is lymphotoxin-alpha 2/beta 1. LTB is an inducer of the inflammatory response system and involved in normal development of lymphoid tissue. Lymphotoxin-beta isoform b is unable to complex with lymphotoxin-alpha suggesting a function for lymphotoxin-beta which is independent of lymphotoxin-alpha. Alternative splicing results in multiple transcript variants encoding different isoforms. [provided by RefSeq, Jul 2008],
<b>Function :</b>	function:Cytokine that binds to LTBR/TNFRSF3. May play a specific role in immune response regulation. Provides the membrane anchor for the attachment of the heterotrimeric complex to the cell surface. Isoform 2 is probably non-functional.,similarity:Belongs to the tumor necrosis factor family.,subunit:Heterotrimer of either two LTB and one LTA subunits or (less prevalent) one LTB and two LTA subunits.,tissue specificity:Spleen and thymus.,
<b>Subcellular Location :</b>	Membrane ; Single-pass type II membrane protein .
<b>Expression :</b>	Spleen and thymus.

## Products Images



Western Blot analysis of various cells using LT- $\beta$  Polyclonal Antibody



Immunofluorescence analysis of HeLa cells, using TNFC Antibody. The picture on the right is blocked with the synthesized peptide.

