

## Neurophysin I Polyclonal Antibody

<b>Catalog No :</b>	YT3072
<b>Reactivity :</b>	Human;Rat
<b>Applications :</b>	WB;IHC;IF;ELISA
<b>Target :</b>	Neurophysin I
<b>Fields :</b>	>>cAMP signaling pathway;>>Neuroactive ligand-receptor interaction;>>Oxytocin signaling pathway
<b>Gene Name :</b>	OXT
<b>Protein Name :</b>	Oxytocin-neurophysin 1
<b>Human Gene Id :</b>	5020
<b>Human Swiss Prot No :</b>	P01178
<b>Mouse Swiss Prot No :</b>	P35454
<b>Rat Gene Id :</b>	25504
<b>Rat Swiss Prot No :</b>	P01179
<b>Immunogen :</b>	The antiserum was produced against synthesized peptide derived from human Neurophysin I. AA range:40-89
<b>Specificity :</b>	Neurophysin I Polyclonal Antibody detects endogenous levels of Neurophysin I protein.
<b>Formulation :</b>	Liquid in PBS containing 50% glycerol, 0.5% BSA and 0.02% sodium azide.
<b>Source :</b>	Polyclonal, Rabbit,IgG
<b>Dilution :</b>	WB 1:500 - 1:2000. IHC 1:100 - 1:300. ELISA: 1:20000.. IF 1:50-200
<b>Purification :</b>	The antibody was affinity-purified from rabbit antiserum by affinity-

chromatography using epitope-specific immunogen.

**Concentration :** 1 mg/ml

**Storage Stability :** -15°C to -25°C/1 year (Do not lower than -25°C)

**Observed Band :** 19kD

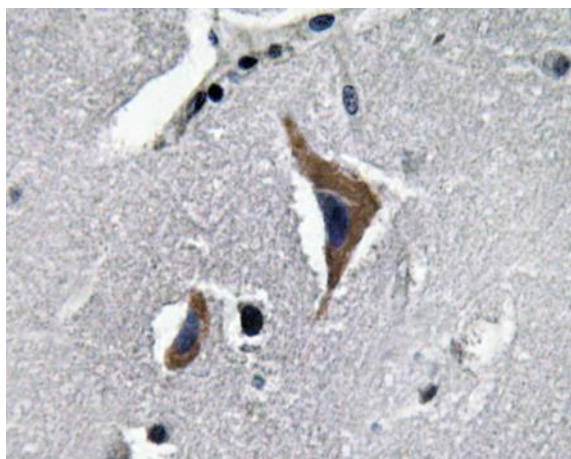
**Background :** This gene encodes a precursor protein that is processed to produce oxytocin and neurophysin I. Oxytocin is a posterior pituitary hormone which is synthesized as an inactive precursor in the hypothalamus along with its carrier protein neurophysin I. Together with neurophysin, it is packaged into neurosecretory vesicles and transported axonally to the nerve endings in the neurohypophysis, where it is either stored or secreted into the bloodstream. The precursor seems to be activated while it is being transported along the axon to the posterior pituitary. This hormone contracts smooth muscle during parturition and lactation. It is also involved in cognition, tolerance, adaptation and complex sexual and maternal behaviour, as well as in the regulation of water excretion and cardiovascular functions. [provided by RefSeq, Dec 2013],

**Function :** function:Neurophysin 1 specifically binds oxytocin.,function:Oxytocin causes contraction of the smooth muscle of the uterus and of the mammary gland.,online information:Oxytocin entry,pharmaceutical:Oxytocin is available under the names Pitocin (Parke-Davis) and Syntocinon (Sandoz). Used to artificially speed or induce labor.,similarity:Belongs to the vasopressin/oxytocin family.,

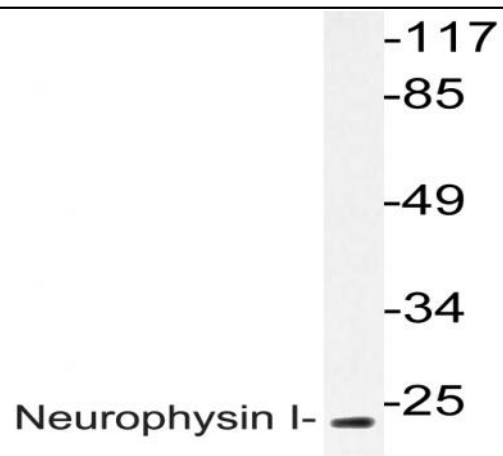
**Subcellular Location :** Secreted.

**Expression :** Lung,

## Products Images



Immunohistochemistry analysis of Neurophysin I antibody in paraffin-embedded human brain tissue.



Western blot analysis of lysate from K562 cells, using Neurophysin I antibody.