

## MCH-2R Polyclonal Antibody

<b>Catalog No :</b>	YT2678
<b>Reactivity :</b>	Human
<b>Applications :</b>	WB;ELISA;IHC
<b>Target :</b>	MCH-2R
<b>Fields :</b>	>>Neuroactive ligand-receptor interaction
<b>Gene Name :</b>	MCHR2
<b>Protein Name :</b>	Melanin-concentrating hormone receptor 2
<b>Human Gene Id :</b>	84539
<b>Human Swiss Prot No :</b>	Q969V1
<b>Immunogen :</b>	The antiserum was produced against synthesized peptide derived from human MCHR2. AA range:291-340
<b>Specificity :</b>	MCH-2R Polyclonal Antibody detects endogenous levels of MCH-2R protein.
<b>Formulation :</b>	Liquid in PBS containing 50% glycerol, 0.5% BSA and 0.02% sodium azide.
<b>Source :</b>	Polyclonal, Rabbit,IgG
<b>Dilution :</b>	WB 1:500-2000;IHC 1:50-300; ELISA 2000-20000
<b>Purification :</b>	The antibody was affinity-purified from rabbit antiserum by affinity-chromatography using epitope-specific immunogen.
<b>Concentration :</b>	1 mg/ml
<b>Storage Stability :</b>	-15°C to -25°C/1 year(Do not lower than -25°C)
<b>Observed Band :</b>	39kD

**Cell Pathway :** Neuroactive ligand-receptor interaction;

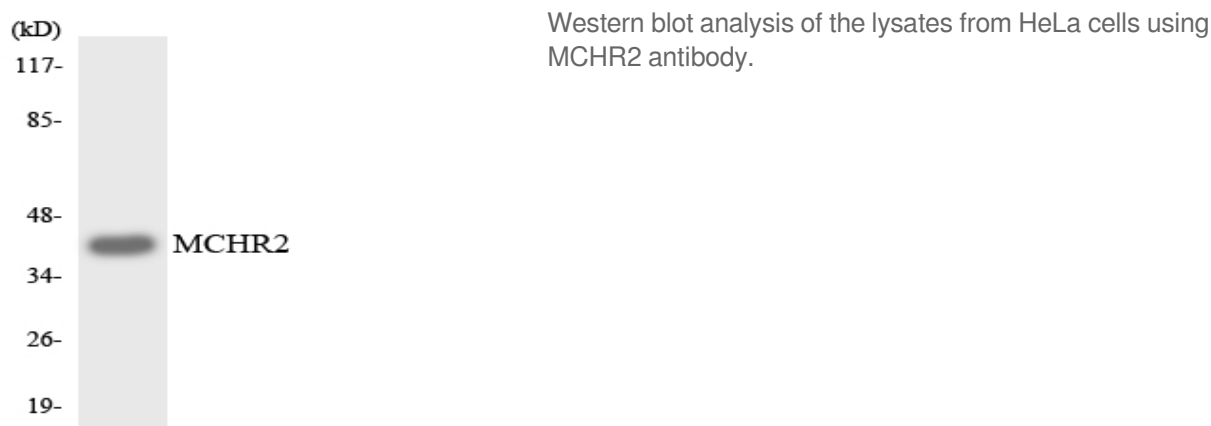
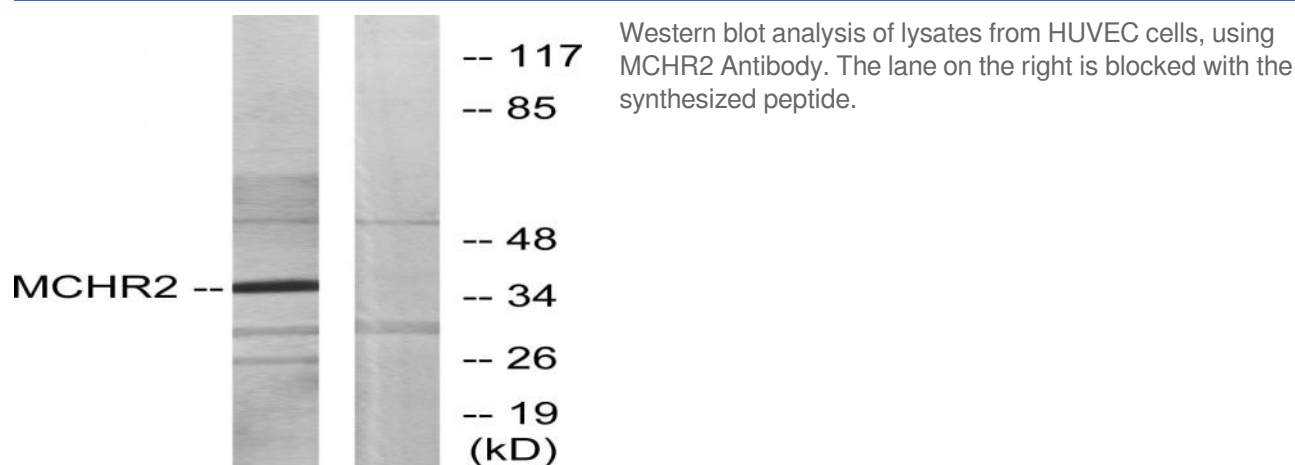
**Background :** function:Receptor for melanin-concentrating hormone, coupled to G proteins that activate phosphoinositide hydrolysis.,similarity:Belongs to the G-protein coupled receptor 1 family.,tissue specificity:Specifically expressed in the brain, with highest levels in cerebral cortex, hippocampus and amygdala. No expression detected in the cerebellum, thalamus or hypothalamus.,

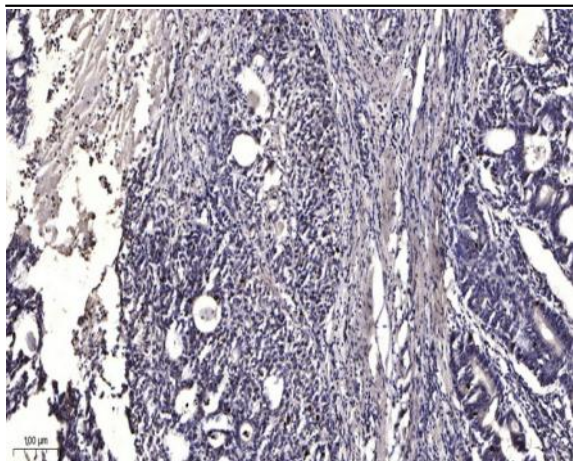
**Function :** function:Receptor for melanin-concentrating hormone, coupled to G proteins that activate phosphoinositide hydrolysis.,similarity:Belongs to the G-protein coupled receptor 1 family.,tissue specificity:Specifically expressed in the brain, with highest levels in cerebral cortex, hippocampus and amygdala. No expression detected in the cerebellum, thalamus or hypothalamus.,

**Subcellular Location :** Cell membrane; Multi-pass membrane protein.

**Expression :** Specifically expressed in the brain, with highest levels in cerebral cortex, hippocampus and amygdala. No expression detected in the cerebellum, thalamus or hypothalamus.

## Products Images





Immunohistochemical analysis of paraffin-embedded human Gastric adenocarcinoma. 1, Antibody was diluted at 1:200(4° overnight). 2, Tris-EDTA,pH9.0 was used for antigen retrieval. 3,Secondary antibody was diluted at 1:200(room temperature, 45min).