

Mdm2 Polyclonal Antibody

Catalog No :	YT2690
Reactivity :	Human;Mouse
Applications :	WB;IHC;IF;ELISA
Target :	MDM2
Fields :	>>Endocrine resistance;>>Platinum drug resistance;>>FoxO signaling pathway;>>Cell cycle;>>p53 signaling pathway;>>Ubiquitin mediated proteolysis;>>Endocytosis;>>PI3K-Akt signaling pathway;>>Cellular senescence;>>C-type lectin receptor signaling pathway;>>Thyroid hormone signaling pathway;>>Shigellosis;>>Human cytomegalovirus infection;>>Human papillomavirus infection;>>Epstein-Barr virus infection;>>Pathways in cancer;>>Transcriptional misregulation in cancer;>>Viral carcinogenesis;>>Proteoglycans in cancer;>>MicroRNAs in cancer;>>Glioma;>>Prostate cancer;>>Melanoma;>>Bladder cancer;>>Chronic myeloid leukemia
Gene Name :	MDM2
Protein Name :	E3 ubiquitin-protein ligase Mdm2
Human Gene Id :	4193
Human Swiss Prot No :	Q00987
Mouse Gene Id :	17246
Mouse Swiss Prot No :	P23804
Immunogen :	The antiserum was produced against synthesized peptide derived from human MDM2. AA range:391-440
Specificity :	Mdm2 Polyclonal Antibody detects endogenous levels of Mdm2 protein.
Formulation :	Liquid in PBS containing 50% glycerol, 0.5% BSA and 0.02% sodium azide.
Source :	Polyclonal, Rabbit,IgG

Dilution : WB 1:500 - 1:2000. IHC 1:100 - 1:300. IF 1:200 - 1:1000. ELISA: 1:40000. Not yet tested in other applications.

Purification : The antibody was affinity-purified from rabbit antiserum by affinity-chromatography using epitope-specific immunogen.

Concentration : 1 mg/ml

Storage Stability : -15°C to -25°C/1 year(Do not lower than -25°C)

Observed Band : 90kD

Cell Pathway : Cell_Cycle_G1S;Cell_Cycle_G2M_DNA;p53;Ubiquitin mediated proteolysis;Endocytosis;Pathways in cancer;Glioma;Prostate cancer;Melanoma;Bladder cancer;Chronic myeloid leukemia;

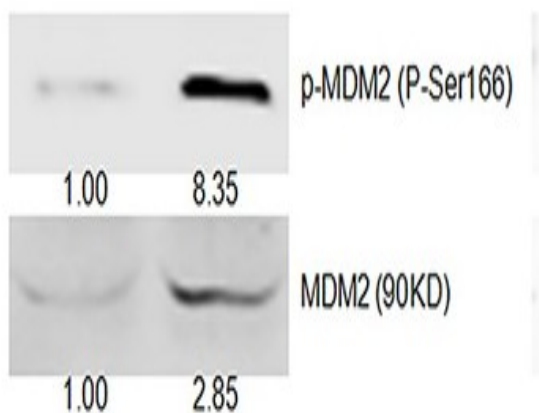
Background : This gene encodes a nuclear-localized E3 ubiquitin ligase. The encoded protein can promote tumor formation by targeting tumor suppressor proteins, such as p53, for proteasomal degradation. This gene is itself transcriptionally-regulated by p53. Overexpression or amplification of this locus is detected in a variety of different cancers. There is a pseudogene for this gene on chromosome 2. Alternative splicing results in a multitude of transcript variants, many of which may be expressed only in tumor cells. [provided by RefSeq, Jun 2013],

Function : disease:Seems to be amplified in certain tumors (including soft tissue sarcomas, osteosarcomas and gliomas). A higher frequency of splice variants lacking p53 binding domain sequences was found in late-stage and high-grade ovarian and bladder carcinomas. Four of the splice variants show loss of p53 binding.,domain:Region I is sufficient for binding p53 and inhibiting its G1 arrest and apoptosis functions. It also binds p73 and E2F1. Region II contains most of a central acidic region required for interaction with ribosomal protein L5 and a putative C4-type zinc finger. The RING finger domain which coordinates two molecules of zinc interacts specifically with RNA whether or not zinc is present and mediates the heterooligomerization with MDM4. It is also essential for its ubiquitin ligase E3 activity toward p53 and itself.,function:Inhibits TP53/p53- and TP73/p73-mediated cell cycle arrest

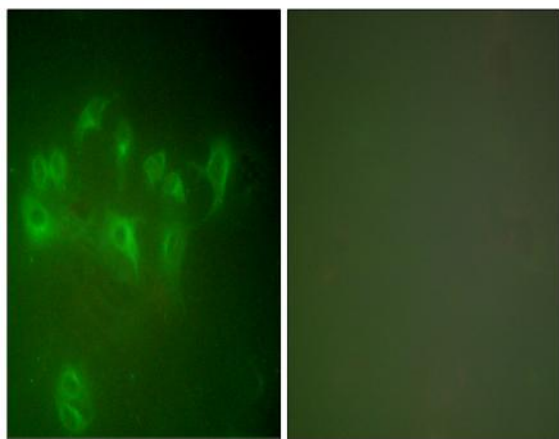
Subcellular Location : Nucleus, nucleoplasm. Cytoplasm . Nucleus, nucleolus. Nucleus . Expressed predominantly in the nucleoplasm. Interaction with ARF(P14) results in the localization of both proteins to the nucleolus. The nucleolar localization signals in both ARF(P14) and MDM2 may be necessary to allow efficient nucleolar localization of both proteins. Colocalizes with RASSF1 isoform A in the nucleus.

Expression : Ubiquitous. Isoform Mdm2-A, isoform Mdm2-B, isoform Mdm2-C, isoform Mdm2-D, isoform Mdm2-E, isoform Mdm2-F and isoform Mdm2-G are observed in a range of cancers but absent in normal tissues.

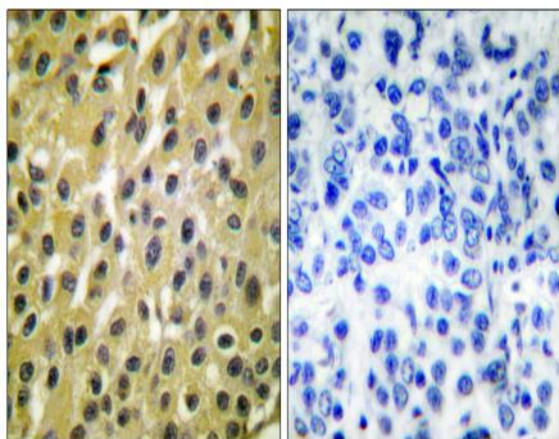
Products Images



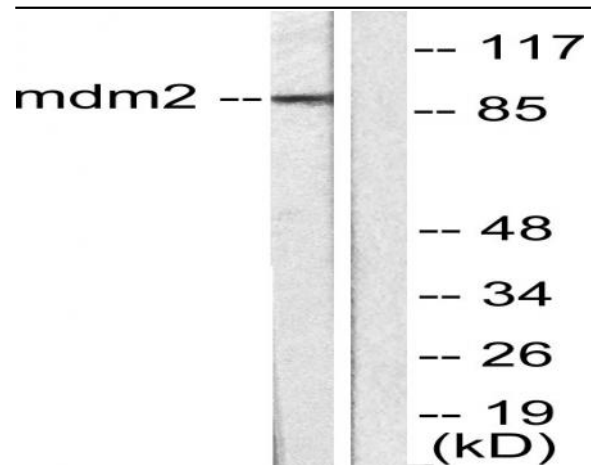
Liu, Xing, et al. "TTK activates Akt and promotes proliferation and migration of hepatocellular carcinoma cells." *Oncotarget* 6.33 (2015): 34309.



Immunofluorescence analysis of A549 cells, using MDM2 Antibody. The picture on the right is blocked with the synthesized peptide.



Immunohistochemistry analysis of paraffin-embedded human breast carcinoma tissue, using MDM2 Antibody. The picture on the right is blocked with the synthesized peptide.



Western blot analysis of lysates from SKOV3 cells, using MDM2 Antibody. The lane on the right is blocked with the synthesized peptide.