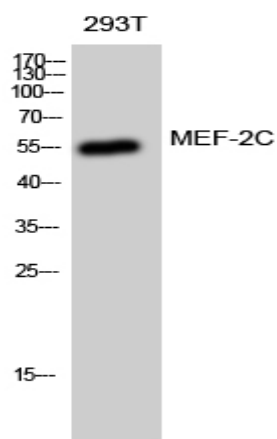


MEF-2C Polyclonal Antibody

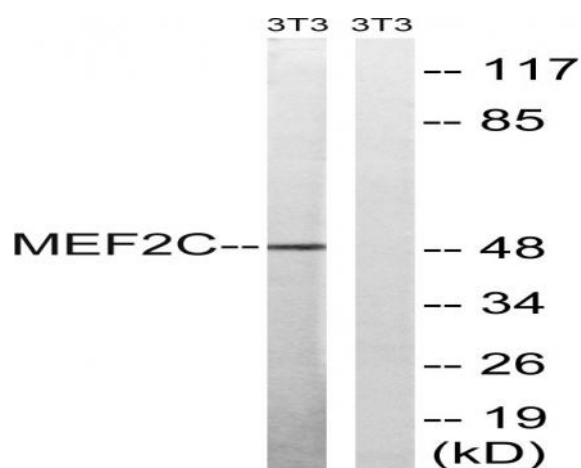
Catalog No :	YT2702
Reactivity :	Human;Mouse
Applications :	WB;IHC;IF;ELISA
Target :	MEF2C
Fields :	>>MAPK signaling pathway;>>cGMP-PKG signaling pathway;>>Apelin signaling pathway;>>Oxytocin signaling pathway;>>Parathyroid hormone synthesis, secretion and action;>>Transcriptional misregulation in cancer;>>Fluid shear stress and atherosclerosis
Gene Name :	MEF2C
Protein Name :	Myocyte-specific enhancer factor 2C
Human Gene Id :	4208
Human Swiss Prot No :	Q06413
Mouse Gene Id :	17260
Mouse Swiss Prot No :	Q8CFN5
Immunogen :	The antiserum was produced against synthesized peptide derived from human MEF2C. AA range:362-411
Specificity :	MEF-2C Polyclonal Antibody detects endogenous levels of MEF-2C protein.
Formulation :	Liquid in PBS containing 50% glycerol, 0.5% BSA and 0.02% sodium azide.
Source :	Polyclonal, Rabbit,IgG
Dilution :	WB 1:500 - 1:2000. IHC 1:100 - 1:300. ELISA: 1:40000.. IF 1:50-200
Purification :	The antibody was affinity-purified from rabbit antiserum by affinity-chromatography using epitope-specific immunogen.

Concentration :	1 mg/ml
Storage Stability :	-15°C to -25°C/1 year(Do not lower than -25°C)
Observed Band :	51kD
Cell Pathway :	AMPK; Protein_Acetylation; MAPK_ERK_Growth;MAPK_G_Protein
Background :	<p>This locus encodes a member of the MADS box transcription enhancer factor 2 (MEF2) family of proteins, which play a role in myogenesis. The encoded protein, MEF2 polypeptide C, has both trans-activating and DNA binding activities. This protein may play a role in maintaining the differentiated state of muscle cells. Mutations and deletions at this locus have been associated with severe mental retardation, stereotypic movements, epilepsy, and cerebral malformation. Alternatively spliced transcript variants have been described. [provided by RefSeq, Jul 2010],</p>
Function :	<p>alternative products:Additional isoforms seem to exist,developmental stage:Expression is highest during the early stages of postnatal development, at later stages levels greatly decrease.,domain:The beta domain, missing in a number of isoforms, is required for enhancement of transcriptional activity.,function:Transcription activator which binds specifically to the MEF2 element present in the regulatory regions of many muscle-specific genes. Controls cardiac morphogenesis and myogenesis, and is also involved in vascular development. May also be involved in neurogenesis and in the development of cortical architecture (By similarity). Isoform 3 and isoform 4, which lack the repressor domain, are more active than isoform 1 and isoform 2.,PTM:Acetylated by p300 on several sites in differentiating myocytes. Acetylation on Lys-4 increases DNA binding and transactivation.,PTM:Phosphorylation on Se</p>
Subcellular Location :	Nucleus . Cytoplasm, sarcoplasm .
Expression :	Expressed in brain and skeletal muscle.

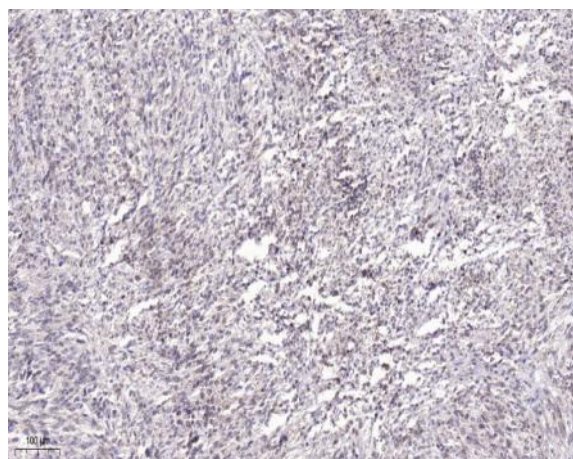
Products Images



Western Blot analysis of 293T cells using MEF-2C Polyclonal Antibody diluted at 1:1000 cells nucleus extracted by Minute TM Cytoplasmic and Nuclear Fractionation kit (SC-003, Inventbiotech, MN, USA).



Western blot analysis of lysates from NIH/3T3 cells, treated with starved 24h, using MEF2C Antibody. The lane on the right is blocked with the synthesized peptide.



Immunohistochemical analysis of paraffin-embedded human Small intestinal stromal tumor. 1, Tris-EDTA, pH9.0 was used for antigen retrieval. 2 Antibody was diluted at 1:200(4° overnight). 3, Secondary antibody was diluted at 1:200(room temperature, 45min).