

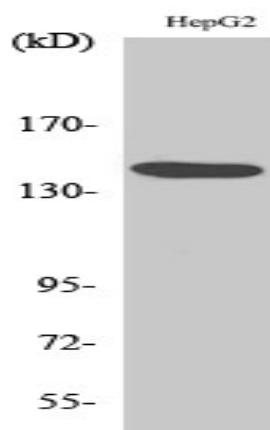
Met Polyclonal Antibody

Catalog No :	YT2738
Reactivity :	Human;Mouse;Rat
Applications :	WB;IHC;IF;ELISA
Target :	Met
Fields :	>>EGFR tyrosine kinase inhibitor resistance;>>MAPK signaling pathway;>>Ras signaling pathway;>>Rap1 signaling pathway;>>Calcium signaling pathway;>>PI3K-Akt signaling pathway;>>Axon guidance;>>Focal adhesion;>>Adherens junction;>>Bacterial invasion of epithelial cells;>>Epithelial cell signaling in Helicobacter pylori infection;>>Malaria;>>Pathways in cancer;>>Transcriptional misregulation in cancer;>>Proteoglycans in cancer;>>MicroRNAs in cancer;>>Chemical carcinogenesis - reactive oxygen species;>>Renal cell carcinoma;>>Melanoma;>>Non-small cell lung cancer;>>Hepatocellular carcinoma;>>Gastric cancer;>>Central carbon metabolism in cancer
Gene Name :	MET
Protein Name :	Hepatocyte growth factor receptor
Human Gene Id :	4233
Human Swiss Prot No :	P08581
Mouse Swiss Prot No :	P16056
Rat Gene Id :	24553
Rat Swiss Prot No :	P97523
Immunogen :	The antiserum was produced against synthesized peptide derived from human Met. AA range:1316-1365
Specificity :	Met Polyclonal Antibody detects endogenous levels of Met protein.
Formulation :	Liquid in PBS containing 50% glycerol, 0.5% BSA and 0.02% sodium azide.

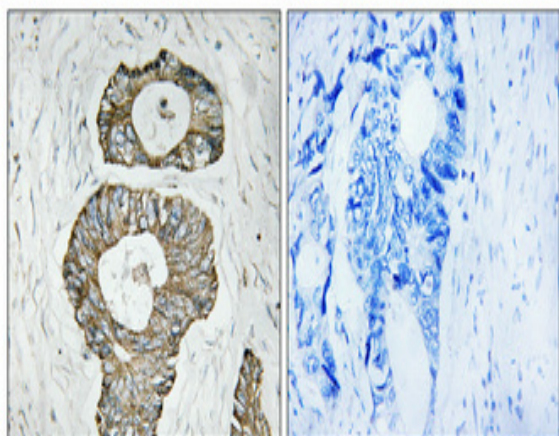
Source :	Polyclonal, Rabbit,IgG
Dilution :	IHC: 100-300.WB 1:500 - 1:2000. IF 1:200 - 1:1000. ELISA: 1:10000. Not yet tested in other applications.
Purification :	The antibody was affinity-purified from rabbit antiserum by affinity-chromatography using epitope-specific immunogen.
Concentration :	1 mg/ml
Storage Stability :	-15°C to -25°C/1 year(Do not lower than -25°C)
Observed Band :	145kD
Cell Pathway :	Cytokine-cytokine receptor interaction;Endocytosis;Axon guidance;Focal adhesion;Adherens_Junction;Epithelial cell signaling in Helicobacter pylori infection;Pathways in cancer;Colorectal cancer;Renal
Background :	This gene encodes a member of the receptor tyrosine kinase family of proteins and the product of the proto-oncogene MET. The encoded preproprotein is proteolytically processed to generate alpha and beta subunits that are linked via disulfide bonds to form the mature receptor. Further processing of the beta subunit results in the formation of the M10 peptide, which has been shown to reduce lung fibrosis. Binding of its ligand, hepatocyte growth factor, induces dimerization and activation of the receptor, which plays a role in cellular survival, embryogenesis, and cellular migration and invasion. Mutations in this gene are associated with papillary renal cell carcinoma, hepatocellular carcinoma, and various head and neck cancers. Amplification and overexpression of this gene are also associated with multiple human cancers. [provided by RefSeq, May 2016],
Function :	catalytic activity:ATP + a [protein]-L-tyrosine = ADP + a [protein]-L-tyrosine phosphate.,disease:Activation of MET after rearrangement with the TPR gene produces an oncogenic protein.,disease:Defects in MET are a cause of hepatocellular carcinoma (HCC) [MIM:114550],disease:Defects in MET are a cause of hereditary papillary renal carcinoma (HPRC) [MIM:605074]; also known as papillary renal cell carcinoma 2 (RCCP2). HPRC is a form of inherited kidney cancer characterized by a predisposition to develop multiple, bilateral papillary renal tumors. The pattern of inheritance is consistent with autosomal dominant transmission with reduced penetrance.,disease:Defects in MET may be associated with gastric cancer.,disease:Genetic variations in MET may be associated with susceptibility to autism type 9 (AUTS9) [MIM:611015]. Autism is a neurodevelopmental disorder characterized by disturbance in I
Subcellular Location :	Membrane; Single-pass type I membrane protein.; [Isoform 3]: Secreted.
Expression :	Expressed in normal hepatocytes as well as in epithelial cells lining the stomach, the small and the large intestine. Found also in basal keratinocytes of esophagus

and skin. High levels are found in liver, gastrointestinal tract, thyroid and kidney. Also present in the brain. Expressed in metaphyseal bone (at protein level) (PubMed:26637977).

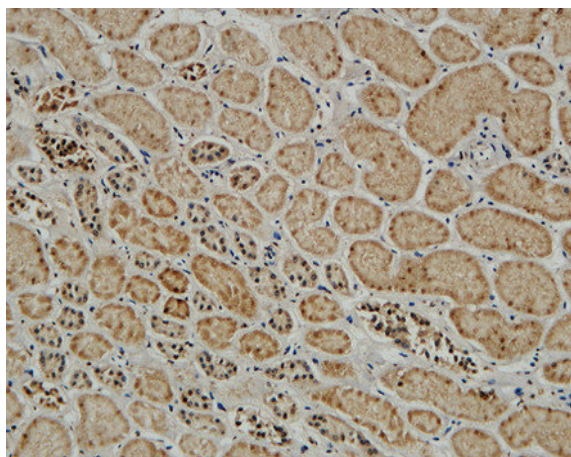
Products Images



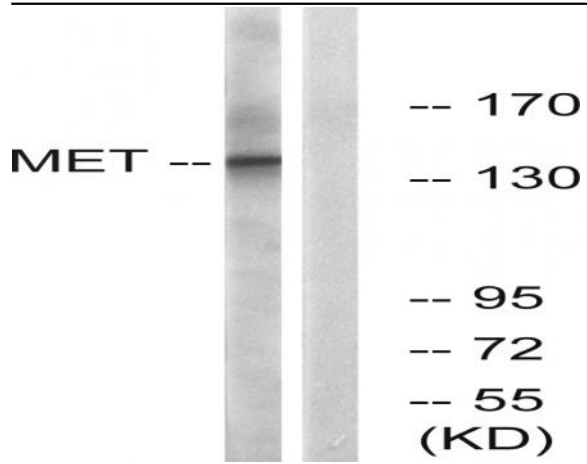
Western Blot analysis of various cells using Met Polyclonal Antibody



Immunohistochemical analysis of paraffin-embedded Human colon cancer. Antibody was diluted at 1:100(4° overnight). High-pressure and temperature Tris-EDTA,pH8.0 was used for antigen retrieval. Negative contrl (right) obtained from antibody was pre-absorbed by immunogen peptide.



Immunohistochemical analysis of paraffin-embedded Human kidney. 1, Antibody was diluted at 1:200(4° overnight). 2, High-pressure and temperature EDTA, pH8.0 was used for antigen retrieval. 3,Secondary antibody was diluted at 1:200(room temperature, 30min).



Western blot analysis of lysates from HepG2 cells, using Met Antibody. The lane on the right is blocked with the synthesized peptide.