

## NCKX4 Polyclonal Antibody

<b>Catalog No :</b>	YT2994
<b>Reactivity :</b>	Human;Mouse;Rat
<b>Applications :</b>	WB;ELISA
<b>Target :</b>	NCKX4
<b>Fields :</b>	>>Olfactory transduction
<b>Gene Name :</b>	SLC24A4
<b>Protein Name :</b>	Sodium/potassium/calcium exchanger 4
<b>Human Gene Id :</b>	123041
<b>Human Swiss Prot No :</b>	Q8NFF2
<b>Mouse Gene Id :</b>	238384
<b>Mouse Swiss Prot No :</b>	Q8CGQ8
<b>Immunogen :</b>	The antiserum was produced against synthesized peptide derived from human SLC24A4. AA range:328-377
<b>Specificity :</b>	NCKX4 Polyclonal Antibody detects endogenous levels of NCKX4 protein.
<b>Formulation :</b>	Liquid in PBS containing 50% glycerol, 0.5% BSA and 0.02% sodium azide.
<b>Source :</b>	Polyclonal, Rabbit,IgG
<b>Dilution :</b>	WB 1:500 - 1:2000. ELISA: 1:40000. Not yet tested in other applications.
<b>Purification :</b>	The antibody was affinity-purified from rabbit antiserum by affinity-chromatography using epitope-specific immunogen.
<b>Concentration :</b>	1 mg/ml

**Storage Stability :** -15°C to -25°C/1 year(Do not lower than -25°C)

**Observed Band :** 60kD

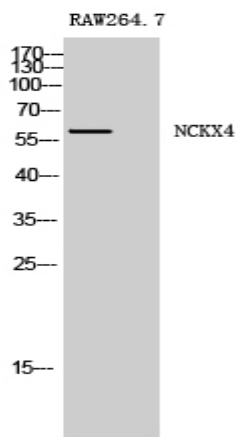
**Background :** This gene encodes a member of the potassium-dependent sodium/calcium exchanger protein family. Alternative splicing results in multiple transcript variants.[provided by RefSeq, Jul 2010],

**Function :** caution:The sequence shown here is derived from an Ensembl automatic analysis pipeline and should be considered as preliminary data.,function:Transports 1 Ca(2+) and 1 K(+) in exchange for 4 Na(+).,polymorphism:Genetic variations in SLC24A4 are associated with skin/hair/eye pigmentation type 6 (SHEP6) [MIM:210750]. Hair, eye and skin pigmentation are among the most visible examples of human phenotypic variation, with a broad normal range that is subject to substantial geographic stratification. In the case of skin, individuals tend to have lighter pigmentation with increasing distance from the equator. By contrast, the majority of variation in human eye and hair color is found among individuals of European ancestry, with most other human populations fixed for brown eyes and black hair.,similarity:Belongs to the sodium/potassium/calcium exchanger family. SLC24A subfamily.,tissue specifici

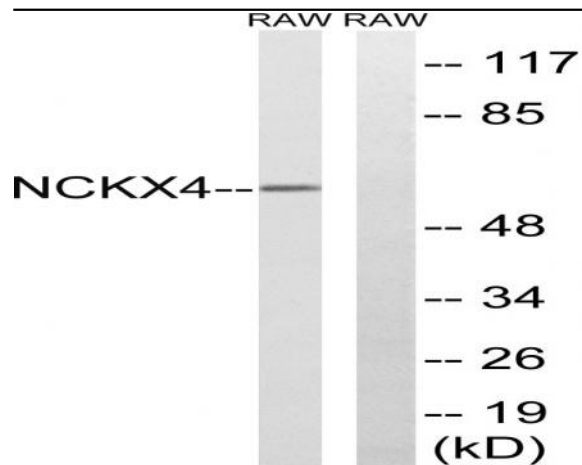
**Subcellular Location :** Cell membrane ; Multi-pass membrane protein . Cytoplasm .

**Expression :** Expressed abundantly in all regions of the brain, aorta, lung and thymus (PubMed:12379639). Expressed at lower levels in the stomach and intestine (PubMed:12379639).

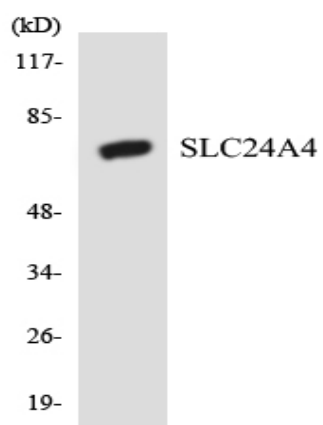
## Products Images



Western Blot analysis of RAW264.7 cells using NCKX4 Polyclonal Antibody



Western blot analysis of lysates from RAW264.7 cells, using SLC24A4 Antibody. The lane on the right is blocked with the synthesized peptide.



Western blot analysis of the lysates from HeLa cells using SLC24A4 antibody.