

MN1 Polyclonal Antibody

Catalog No :	YT2802
Reactivity :	Human;Mouse
Applications :	WB;ELISA;IHC
Target :	MN1
Gene Name :	MN1
Protein Name :	Probable tumor suppressor protein MN1
Human Gene Id :	4330
Human Swiss Prot No :	Q10571
Immunogen :	The antiserum was produced against synthesized peptide derived from human MN1. AA range:821-870
Specificity :	MN1 Polyclonal Antibody detects endogenous levels of MN1 protein.
Formulation :	Liquid in PBS containing 50% glycerol, 0.5% BSA and 0.02% sodium azide.
Source :	Polyclonal, Rabbit,IgG
Dilution :	WB 1:500-2000;IHC 1:50-300; ELISA 2000-20000
Purification :	The antibody was affinity-purified from rabbit antiserum by affinity-chromatography using epitope-specific immunogen.
Concentration :	1 mg/ml
Storage Stability :	-15°C to -25°C/1 year(Do not lower than -25°C)
Observed Band :	135kD
Background :	Meningioma 1 (MN1) contains two sets of CAG repeats. It is disrupted by a balanced translocation (4;22) in a meningioma, and its inactivation may contribute

to meningioma 32 pathogenesis. [provided by RefSeq, Jul 2008],

Function :

disease:A chromosomal aberration involving MN1 may be a cause of acute myeloid leukemia (AML). Translocation t(12;22)(p13;q11) with TEL.,disease:Defects in MN1 may be a cause of meningiomas, slowly growing benign tumors derived from the arachnoidal cap cells of the leptomeninges, the soft coverings of the brain and spinal cord. Meningiomas are believed to be the most common primary tumors of the central nervous system in man.,function:May play a role in tumor suppression.,tissue specificity:Ubiquitously expressed. Highest levels in skeletal muscle.,

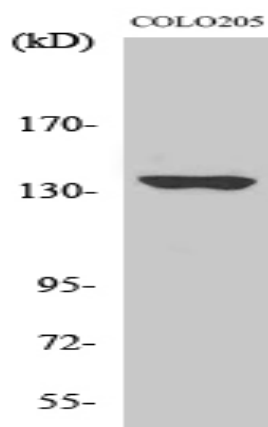
Subcellular Location :

Nucleus .

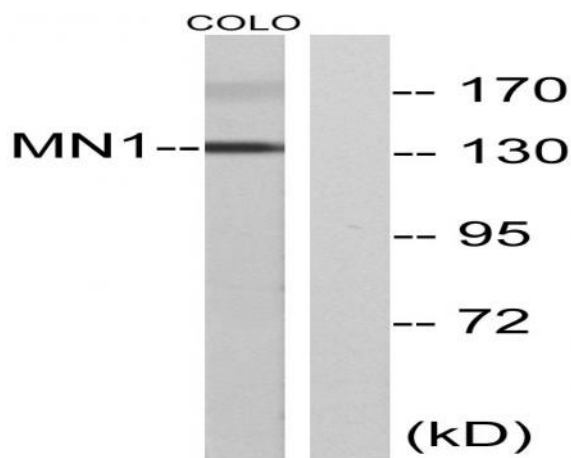
Expression :

Widely expressed in fetal and adult tissues. Highest expression is observed in fetal brain and skeletal muscle, and adult skeletal muscle.

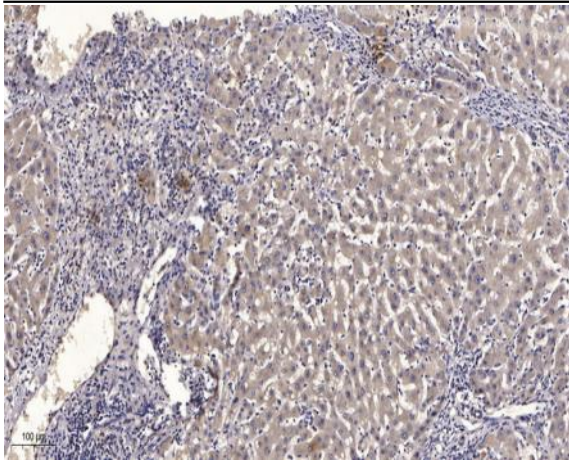
Products Images



Western blot analysis of various cells using MN1 Polyclonal Antibody diluted at 1:2000



Western blot analysis of lysates from COLO cells, using MN1 Antibody. The lane on the right is blocked with the synthesized peptide.



Immunohistochemical analysis of paraffin-embedded human liver cancer. 1, Antibody was diluted at 1:200(4° overnight). 2, Tris-EDTA,pH9.0 was used for antigen retrieval. 3,Secondary antibody was diluted at 1:200(room temperature, 45min).