

**Mob3B Polyclonal Antibody**

<b>Catalog No :</b>	YT2811
<b>Reactivity :</b>	Human;Mouse
<b>Applications :</b>	WB;IHC;IF;ELISA
<b>Target :</b>	Mob3B
<b>Gene Name :</b>	MOB3B
<b>Protein Name :</b>	MOB kinase activator 3B
<b>Human Gene Id :</b>	79817
<b>Human Swiss Prot No :</b>	Q86TA1
<b>Mouse Gene Id :</b>	214944
<b>Mouse Swiss Prot No :</b>	Q8VE04
<b>Immunogen :</b>	The antiserum was produced against synthesized peptide derived from human MOBKL2B. AA range:71-120
<b>Specificity :</b>	Mob3B Polyclonal Antibody detects endogenous levels of Mob3B protein.
<b>Formulation :</b>	Liquid in PBS containing 50% glycerol, 0.5% BSA and 0.02% sodium azide.
<b>Source :</b>	Polyclonal, Rabbit,IgG
<b>Dilution :</b>	WB 1:500 - 1:2000. IHC 1:100 - 1:300. ELISA: 1:5000.. IF 1:50-200
<b>Purification :</b>	The antibody was affinity-purified from rabbit antiserum by affinity-chromatography using epitope-specific immunogen.
<b>Concentration :</b>	1 mg/ml
<b>Storage Stability :</b>	-15°C to -25°C/1 year(Do not lower than -25°C)

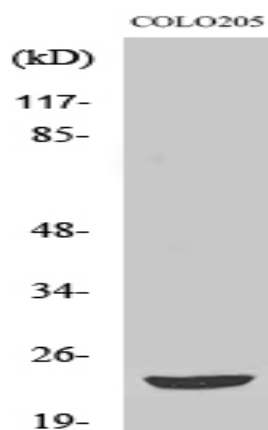
**Observed Band :** 23kD

**Background :** The protein encoded by this gene shares similarity with the yeast Mob1 protein. Yeast Mob1 binds Mps1p, a protein kinase essential for spindle pole body duplication and mitotic checkpoint regulation. This gene is located on the opposite strand as the interferon kappa precursor (IFNK) gene. [provided by RefSeq, Jul 2008],

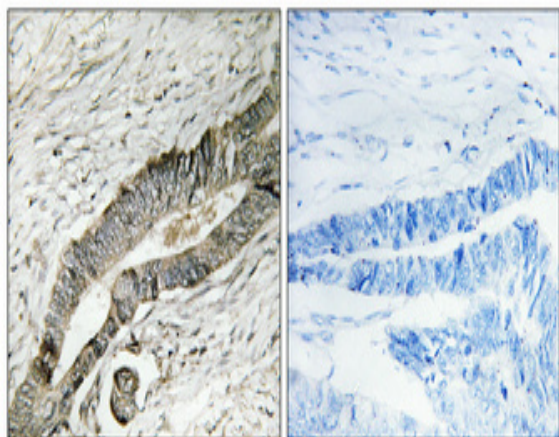
**Function :** function:May regulate the activity of kinases.,similarity:Belongs to the MOB1/phocein family.,

**Expression :** Colon,Spinal cord,Testis,

## Products Images



Western Blot analysis of various cells using Mob3B Polyclonal Antibody



Immunohistochemical analysis of paraffin-embedded Human colon cancer. Antibody was diluted at 1:100(4° overnight). High-pressure and temperature Tris-EDTA,pH8.0 was used for antigen retrieval. Negative contrl (right) obtaned from antibody was pre-absorbed by immunogen peptide.

