

## MOX-2 Polyclonal Antibody

<b>Catalog No :</b>	YT2821
<b>Reactivity :</b>	Human;Mouse;Rat
<b>Applications :</b>	WB;IHC;IF;ELISA
<b>Target :</b>	MOX-2
<b>Gene Name :</b>	MEOX2
<b>Protein Name :</b>	Homeobox protein MOX-2
<b>Human Gene Id :</b>	4223
<b>Human Swiss Prot No :</b>	P50222
<b>Mouse Gene Id :</b>	17286
<b>Mouse Swiss Prot No :</b>	P32443
<b>Rat Gene Id :</b>	29279
<b>Rat Swiss Prot No :</b>	P39020
<b>Immunogen :</b>	The antiserum was produced against synthesized peptide derived from human MEOX2. AA range:151-200
<b>Specificity :</b>	MOX-2 Polyclonal Antibody detects endogenous levels of MOX-2 protein.
<b>Formulation :</b>	Liquid in PBS containing 50% glycerol, 0.5% BSA and 0.02% sodium azide.
<b>Source :</b>	Polyclonal, Rabbit,IgG
<b>Dilution :</b>	WB 1:500 - 1:2000. IHC 1:100 - 1:300. ELISA: 1:10000.. IF 1:50-200
<b>Purification :</b>	The antibody was affinity-purified from rabbit antiserum by affinity-chromatography using epitope-specific immunogen.

**Concentration :** 1 mg/ml

**Storage Stability :** -15°C to -25°C/1 year(Do not lower than -25°C)

**Observed Band :** 33kD

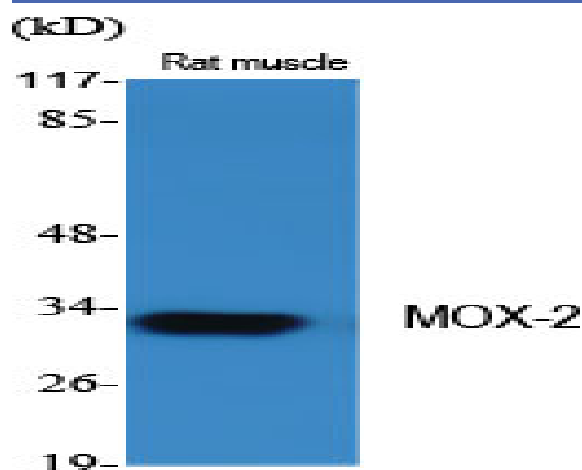
**Background :** This gene encodes a member of a subfamily of non-clustered, diverged, antennapedia-like homeobox-containing genes. The encoded protein may play a role in the regulation of vertebrate limb myogenesis. Mutations in the related mouse protein may be associated with craniofacial and/or skeletal abnormalities, in addition to neurovascular dysfunction observed in Alzheimer's disease. [provided by RefSeq, Jul 2008],

**Function :** function:Role in mesoderm induction and its earliest regional specification, somitogenesis, and myogenic and sclerotomal differentiation. May have a regulatory role when quiescent vascular smooth muscle cells reenter the cell cycle.,polymorphism:The poly-His region of MEOX2 is polymorphic and the number of His varies in the population.,similarity:Contains 1 homeobox DNA-binding domain.,subunit:Interacts with RNF10.,tissue specificity:Embryo and placenta.,

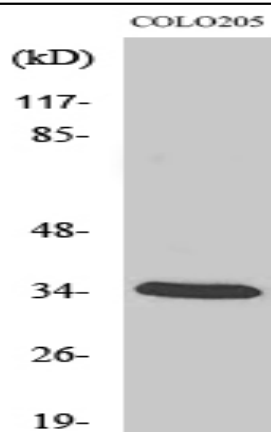
**Subcellular Location :** Nucleus . Nucleus speckle .

**Expression :** Embryo,Heart,Skin,

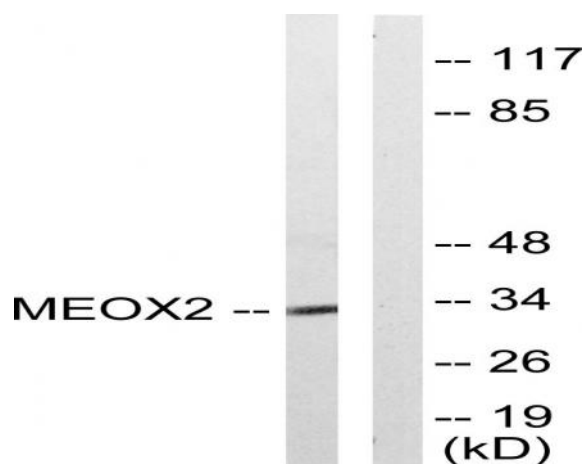
## Products Images



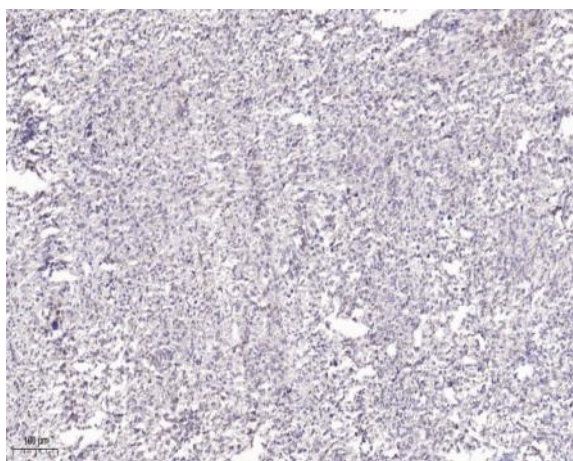
Western Blot analysis of various cells using MOX-2 Polyclonal Antibody diluted at 1:2000



Western Blot analysis of COLO205 cells using MOX-2 Polyclonal Antibody diluted at 1:2000



Western blot analysis of lysates from COLO205 cells, using MEOX2 Antibody. The lane on the right is blocked with the synthesized peptide.



Immunohistochemical analysis of paraffin-embedded human Small intestinal stromal tumor. 1, Tris-EDTA, pH9.0 was used for antigen retrieval. 2 Antibody was diluted at 1:200(4° overnight). 3, Secondary antibody was diluted at 1:200(room temperature, 45min).