

Nkx-6.1 Polyclonal Antibody

Catalog No :	YT3143
Reactivity :	Human;Mouse;Rat
Applications :	WB;ELISA
Target :	Nkx-6.1
Fields :	>>Maturity onset diabetes of the young
Gene Name :	NKX6-1
Protein Name :	Homeobox protein Nkx-6.1
Human Gene Id :	4825
Human Swiss Prot No :	P78426
Mouse Gene Id :	18096
Mouse Swiss Prot No :	Q99MA9
Rat Gene Id :	65193
Rat Swiss Prot No :	O35762
Immunogen :	Synthesized peptide derived from Nkx-6.1 . at AA range: 180-260
Specificity :	Nkx-6.1 Polyclonal Antibody detects endogenous levels of Nkx-6.1 protein.
Formulation :	Liquid in PBS containing 50% glycerol, 0.5% BSA and 0.02% sodium azide.
Source :	Polyclonal, Rabbit,IgG
Dilution :	WB 1:500 - 1:2000. ELISA: 1:40000. Not yet tested in other applications.
Purification :	The antibody was affinity-purified from rabbit antiserum by affinity-

chromatography using epitope-specific immunogen.

Concentration : 1 mg/ml

Storage Stability : -15°C to -25°C/1 year(Do not lower than -25°C)

Molecularweight : 38kD

Cell Pathway : Maturity onset diabetes of the young;

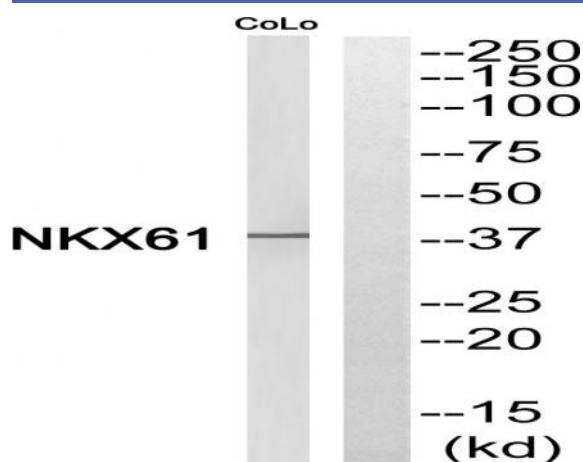
Background : In the pancreas, NKX6.1 is required for the development of beta cells and is a potent bifunctional transcription regulator that binds to AT-rich sequences within the promoter region of target genes lype et al. (2004) [PubMed 15056733].[supplied by OMIM, Mar 2008],

Function : function:May be important for control of islet development and/or regulation of insulin biosynthesis.,similarity:Contains 1 homeobox DNA-binding domain.,tissue specificity:Pancreatic beta cells.,

Subcellular Location : Nucleus .

Expression : Pancreatic beta cells.

Products Images



Western blot analysis of NKX61 Antibody. The lane on the right is blocked with the NKX61 peptide.