

MxB Polyclonal Antibody

Catalog No :	YT2925
Reactivity :	Human;Rat;Mouse;
Applications :	WB;IHC
Target :	MxB
Fields :	>>Viral life cycle - HIV-1;>>Hepatitis C;>>Measles;>>Influenza A;>>Human papillomavirus infection;>>Coronavirus disease - COVID-19
Gene Name :	MX2
Protein Name :	Interferon-induced GTP-binding protein Mx2
Human Gene Id :	4600
Human Swiss Prot No :	P20592
Mouse Swiss Prot No :	Q9WVP9
Immunogen :	Synthesized peptide derived from the Internal region of human MxB.
Specificity :	MxB Polyclonal Antibody detects endogenous levels of MxB protein.
Formulation :	Liquid in PBS containing 50% glycerol, 0.5% BSA and 0.02% sodium azide.
Source :	Polyclonal, Rabbit,IgG
Dilution :	WB 1:500-2000;IHC 1:50-300
Purification :	The antibody was affinity-purified from rabbit antiserum by affinity-chromatography using epitope-specific immunogen.
Concentration :	1 mg/ml
Storage Stability :	-15°C to -25°C/1 year(Do not lower than -25°C)

Observed Band : 82kD**Background :**

The protein encoded by this gene has a nuclear and a cytoplasmic form and is a member of both the dynamin family and the family of large GTPases. The nuclear form is localized in a granular pattern in the heterochromatin region beneath the nuclear envelope. A nuclear localization signal (NLS) is present at the amino terminal end of the nuclear form but is lacking in the cytoplasmic form due to use of an alternate translation start codon. This protein is upregulated by interferon-alpha but does not contain the antiviral activity of a similar myxovirus resistance protein 1. [provided by RefSeq, Jul 2008],

Function :

induction:By interferons.,similarity:Belongs to the dynamin family.,similarity:Contains 1 GED domain.,

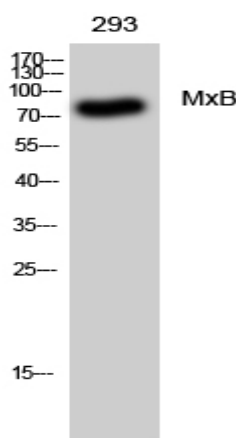
Subcellular Location :

Cytoplasm . Nucleus . Nucleus, nuclear pore complex . Localization to nuclear pores requires GTP-binding.

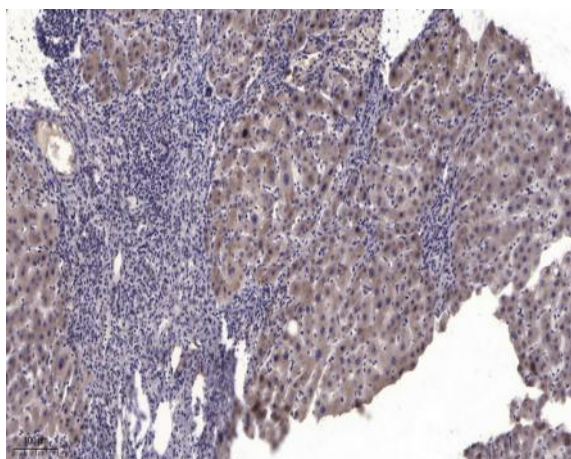
Expression :

Brain,

Products Images



Western Blot analysis of 293 cells using MxB Polyclonal Antibody



Immunohistochemical analysis of paraffin-embedded human liver cancer. 1, Antibody was diluted at 1:200(4° overnight). 2, Tris-EDTA,pH9.0 was used for antigen retrieval. 3,Secondary antibody was diluted at 1:200(room temperature, 45min).