

MYBPC1 Polyclonal Antibody

Catalog No :	YT2926
Reactivity :	Human;Mouse;Rat
Applications :	WB;ELISA;IHC
Target :	MYBPC1
Gene Name :	MYBPC1
Protein Name :	Myosin-binding protein C slow-type
Human Gene Id :	4604
Human Swiss Prot No :	Q00872
Rat Gene Id :	362867
Rat Swiss Prot No :	Q63518
Immunogen :	The antiserum was produced against synthesized peptide derived from human MYBPC1. AA range:218-267
Specificity :	MYBPC1 Polyclonal Antibody detects endogenous levels of MYBPC1 protein.
Formulation :	Liquid in PBS containing 50% glycerol, 0.5% BSA and 0.02% sodium azide.
Source :	Polyclonal, Rabbit,IgG
Dilution :	WB 1:500-2000;IHC 1:50-300; ELISA 2000-20000
Purification :	The antibody was affinity-purified from rabbit antiserum by affinity-chromatography using epitope-specific immunogen.
Concentration :	1 mg/ml
Storage Stability :	-15°C to -25°C/1 year(Do not lower than -25°C)

Observed Band : 120kD**Background :**

This gene encodes a member of the myosin-binding protein C family. Myosin-binding protein C family members are myosin-associated proteins found in the cross-bridge-bearing zone (C region) of A bands in striated muscle. The encoded protein is the slow skeletal muscle isoform of myosin-binding protein C and plays an important role in muscle contraction by recruiting muscle-type creatine kinase to myosin filaments. Mutations in this gene are associated with distal arthrogyrosis type I. Alternatively spliced transcript variants encoding multiple isoforms have been observed for this gene. [provided by RefSeq, Dec 2011],

Function :

function:Thick filament-associated protein located in the crossbridge region of vertebrate striated muscle a bands. In vitro it binds MHC, F-actin and native thin filaments, and modifies the activity of actin-activated myosin ATPase. It may modulate muscle contraction or may play a more structural role.,similarity:Belongs to the immunoglobulin superfamily. MyBP family.,similarity:Contains 3 fibronectin type-III domains.,similarity:Contains 7 Ig-like C2-type (immunoglobulin-like) domains.,

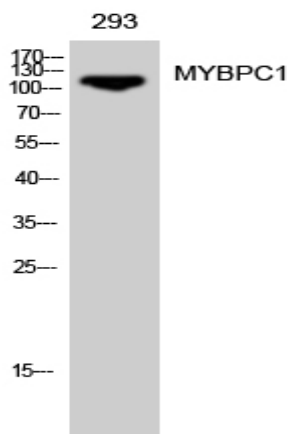
Subcellular Location :

cytosol,myofibril,myosin filament,

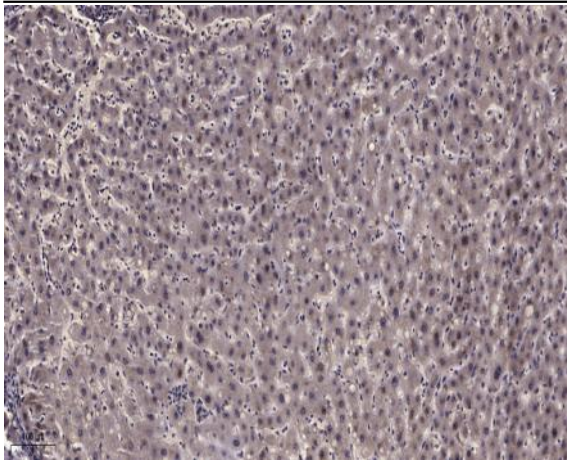
Expression :

Brain,Fetal skeletal muscle,Hippocampus,Liver,Muscle pool- 2 tissue

Products Images



Western Blot analysis of 293 cells using MYBPC1 Polyclonal Antibody diluted at 1:500



Immunohistochemical analysis of paraffin-embedded human liver cancer. 1, Antibody was diluted at 1:200(4° overnight). 2, Tris-EDTA,pH9.0 was used for antigen retrieval. 3,Secondary antibody was diluted at 1:200(room temperature, 45min).