

## NSF Polyclonal Antibody

<b>Catalog No :</b>	YT3195
<b>Reactivity :</b>	Human;Mouse;Rat
<b>Applications :</b>	WB;ELISA
<b>Target :</b>	NSF
<b>Fields :</b>	>>Synaptic vesicle cycle;>>GABAergic synapse;>>Vasopressin-regulated water reabsorption
<b>Gene Name :</b>	NSF
<b>Protein Name :</b>	Vesicle-fusing ATPase
<b>Human Gene Id :</b>	4905
<b>Human Swiss Prot No :</b>	P46459
<b>Mouse Gene Id :</b>	18195
<b>Mouse Swiss Prot No :</b>	P46460
<b>Rat Gene Id :</b>	60355
<b>Rat Swiss Prot No :</b>	Q9QUL6
<b>Immunogen :</b>	Synthesized peptide derived from NSF . at AA range: 110-190
<b>Specificity :</b>	NSF Polyclonal Antibody detects endogenous levels of NSF protein.
<b>Formulation :</b>	Liquid in PBS containing 50% glycerol, 0.5% BSA and 0.02% sodium azide.
<b>Source :</b>	Polyclonal, Rabbit,IgG
<b>Dilution :</b>	WB 1:500 - 1:2000. ELISA: 1:40000. Not yet tested in other applications.

**Purification :** The antibody was affinity-purified from rabbit antiserum by affinity-chromatography using epitope-specific immunogen.

**Concentration :** 1 mg/ml

**Storage Stability :** -15°C to -25°C/1 year(Do not lower than -25°C)

**Observed Band :** 75kD

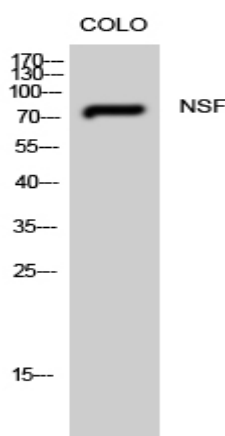
**Background :** catalytic activity:ATP + H(2)O = ADP + phosphate.,cofactor:Binds 1 magnesium ion per subunit.,function:Required for vesicle-mediated transport. Catalyzes the fusion of transport vesicles within the Golgi cisternae. Is also required for transport from the endoplasmic reticulum to the Golgi stack. Seem to function as a fusion protein required for the delivery of cargo proteins to all compartments of the Golgi stack independent of vesicle origin.,similarity:Belongs to the AAA ATPase family.,subunit:Homohexamer. Interacts with GABARAP and GABARAPL2.,

**Function :** catalytic activity:ATP + H(2)O = ADP + phosphate.,cofactor:Binds 1 magnesium ion per subunit.,function:Required for vesicle-mediated transport. Catalyzes the fusion of transport vesicles within the Golgi cisternae. Is also required for transport from the endoplasmic reticulum to the Golgi stack. Seem to function as a fusion protein required for the delivery of cargo proteins to all compartments of the Golgi stack independent of vesicle origin.,similarity:Belongs to the AAA ATPase family.,subunit:Homohexamer. Interacts with GABARAP and GABARAPL2.,

**Subcellular Location :** Cytoplasm.

**Expression :** Brain,Kidney,Lung,

## Products Images



Western Blot analysis of CoLo cells using NSF Polyclonal Antibody