

**MYH15 Polyclonal Antibody**

<b>Catalog No :</b>	YT2934
<b>Reactivity :</b>	Human
<b>Applications :</b>	WB;IHC
<b>Target :</b>	MYH15
<b>Gene Name :</b>	MYH15
<b>Protein Name :</b>	Myosin-15
<b>Human Gene Id :</b>	22989
<b>Human Swiss Prot No :</b>	Q9Y2K3
<b>Immunogen :</b>	The antiserum was produced against synthesized peptide derived from human MYH15. AA range:624-673
<b>Specificity :</b>	MYH15 Polyclonal Antibody detects endogenous levels of MYH15 protein.
<b>Formulation :</b>	Liquid in PBS containing 50% glycerol, 0.5% BSA and 0.02% sodium azide.
<b>Source :</b>	Polyclonal, Rabbit,IgG
<b>Dilution :</b>	WB 1:500-2000;IHC 1:50-300
<b>Purification :</b>	The antibody was affinity-purified from rabbit antiserum by affinity-chromatography using epitope-specific immunogen.
<b>Concentration :</b>	1 mg/ml
<b>Storage Stability :</b>	-15°C to -25°C/1 year(Do not lower than -25°C)
<b>Observed Band :</b>	225kD
<b>Cell Pathway :</b>	Tight junction;Viral myocarditis;

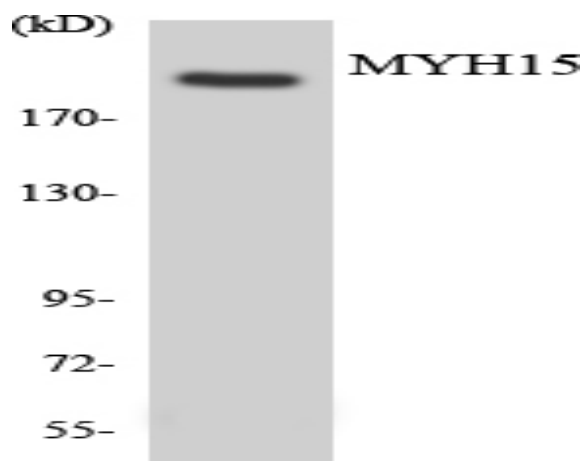
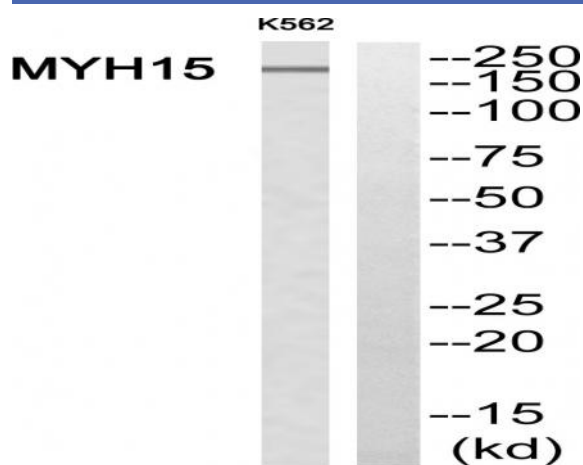
**Background :** domain:The rodlike tail sequence is highly repetitive, showing cycles of a 28-residue repeat pattern composed of 4 heptapeptides, characteristic for alpha-helical coiled coils.,function:Muscle contraction.,similarity:Contains 1 IQ domain.,similarity:Contains 1 myosin head-like domain.,subcellular location:Thick filaments of the myofibrils.,subunit:Muscle myosin is a hexameric protein that consists of 2 heavy chain subunits (MHC), 2 alkali light chain subunits (MLC) and 2 regulatory light chain subunits (MLC-2).,

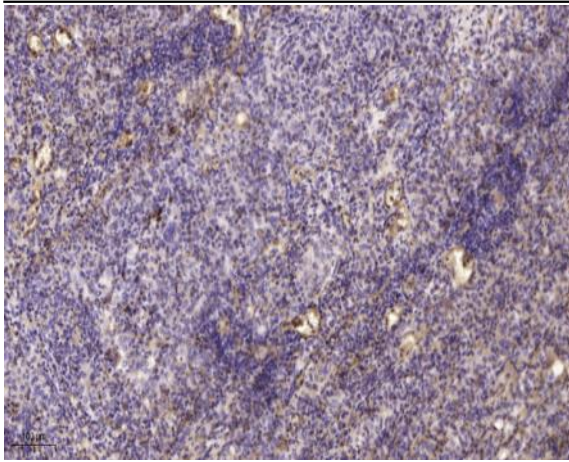
**Function :** domain:The rodlike tail sequence is highly repetitive, showing cycles of a 28-residue repeat pattern composed of 4 heptapeptides, characteristic for alpha-helical coiled coils.,function:Muscle contraction.,similarity:Contains 1 IQ domain.,similarity:Contains 1 myosin head-like domain.,subcellular location:Thick filaments of the myofibrils.,subunit:Muscle myosin is a hexameric protein that consists of 2 heavy chain subunits (MHC), 2 alkali light chain subunits (MLC) and 2 regulatory light chain subunits (MLC-2).,

**Subcellular Location :** Cytoplasm, myofibril. Thick filaments of the myofibrils.

**Expression :** Brain,Epithelium,

## Products Images





Immunohistochemical analysis of paraffin-embedded human lung cancer. 1, Antibody was diluted at 1:200(4° overnight). 2, Tris-EDTA,pH9.0 was used for antigen retrieval. 3,Secondary antibody was diluted at 1:200(room temperature, 45min).