

## Myosin XVI Polyclonal Antibody

<b>Catalog No :</b>	YT2951
<b>Reactivity :</b>	Human;Rat;Mouse;
<b>Applications :</b>	WB;ELISA;IHC
<b>Target :</b>	Myosin XVI
<b>Gene Name :</b>	MYO16
<b>Protein Name :</b>	Unconventional myosin-XVI
<b>Human Gene Id :</b>	23026
<b>Human Swiss Prot No :</b>	Q9Y6X6
<b>Mouse Swiss Prot No :</b>	Q5DU14
<b>Immunogen :</b>	Synthesized peptide derived from Myosin XVI . at AA range: 1050-1130
<b>Specificity :</b>	Myosin XVI Polyclonal Antibody detects endogenous levels of Myosin XVI protein.
<b>Formulation :</b>	Liquid in PBS containing 50% glycerol, 0.5% BSA and 0.02% sodium azide.
<b>Source :</b>	Polyclonal, Rabbit,IgG
<b>Dilution :</b>	WB 1:500-2000;IHC 1:50-300; ELISA 2000-20000
<b>Purification :</b>	The antibody was affinity-purified from rabbit antiserum by affinity-chromatography using epitope-specific immunogen.
<b>Concentration :</b>	1 mg/ml
<b>Storage Stability :</b>	-15°C to -25°C/1 year(Do not lower than -25°C)
<b>Observed Band :</b>	200kD

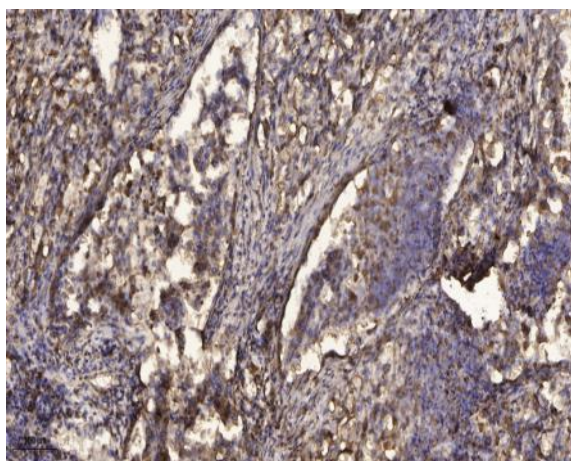
**Background :** function:Myosins are actin-based motor molecules with ATPase activity. Unconventional myosins serve in intracellular movements. Their highly divergent tails are presumed to bind to membranous compartments, which would be moved relative to actin filaments. May be involved in targeting of the catalytic subunit of protein phosphatase 1 during brain development.,similarity:Contains 1 IQ domain.,similarity:Contains 2 myosin head-like domains.,similarity:Contains 7 ANK repeats.,subcellular location:Found in puncta in soma and processes of astrocytes and dissociated cerebellar cells with the morphology of migrating granule cells.,subunit:Binds PPP1CA and/or PPP1CC. Binds F-actin in an ATP-sensitive manner.,

**Function :** function:Myosins are actin-based motor molecules with ATPase activity. Unconventional myosins serve in intracellular movements. Their highly divergent tails are presumed to bind to membranous compartments, which would be moved relative to actin filaments. May be involved in targeting of the catalytic subunit of protein phosphatase 1 during brain development.,similarity:Contains 1 IQ domain.,similarity:Contains 2 myosin head-like domains.,similarity:Contains 7 ANK repeats.,subcellular location:Found in puncta in soma and processes of astrocytes and dissociated cerebellar cells with the morphology of migrating granule cells.,subunit:Binds PPP1CA and/or PPP1CC. Binds F-actin in an ATP-sensitive manner.,

**Subcellular Location :** Cytoplasm . Found in puncta in soma and processes of astrocytes and dissociated cerebellar cells with the morphology of migrating granule cells. .

**Expression :** Amygdala,Brain,

## Products Images



Immunohistochemical analysis of paraffin-embedded human Squamous cell carcinoma of lung. 1, Antibody was diluted at 1:200(4° overnight). 2, Tris-EDTA,pH9.0 was used for antigen retrieval. 3,Secondary antibody was diluted at 1:200(room temperature, 45min).