

## MZF-1 Polyclonal Antibody

<b>Catalog No :</b>	YT2959
<b>Reactivity :</b>	Human
<b>Applications :</b>	WB;IHC;IF;ELISA
<b>Target :</b>	MZF-1
<b>Gene Name :</b>	MZF1
<b>Protein Name :</b>	Myeloid zinc finger 1
<b>Human Gene Id :</b>	7593
<b>Human Swiss Prot No :</b>	P28698
<b>Immunogen :</b>	The antiserum was produced against synthesized peptide derived from human MZF-1. AA range:1-50
<b>Specificity :</b>	MZF-1 Polyclonal Antibody detects endogenous levels of MZF-1 protein.
<b>Formulation :</b>	Liquid in PBS containing 50% glycerol, 0.5% BSA and 0.02% sodium azide.
<b>Source :</b>	Polyclonal, Rabbit,IgG
<b>Dilution :</b>	WB 1:500 - 1:2000. IHC 1:100 - 1:300. ELISA: 1:10000.. IF 1:50-200
<b>Purification :</b>	The antibody was affinity-purified from rabbit antiserum by affinity-chromatography using epitope-specific immunogen.
<b>Concentration :</b>	1 mg/ml
<b>Storage Stability :</b>	-15°C to -25°C/1 year(Do not lower than -25°C)
<b>Observed Band :</b>	82kD
<b>Background :</b>	function:May be one regulator of transcriptional events during hemopoietic development.,induction:By retinoic acid.,similarity:Belongs to the krueppel

C2H2-type zinc-finger protein family.,similarity:Contains 1 SCAN box domain.,similarity:Contains 13 C2H2-type zinc fingers.,tissue specificity:Preferentially expressed in differentiating myeloid cells.,

**Function :**

function:May be one regulator of transcriptional events during hemopoietic development.,induction:By retinoic acid.,similarity:Belongs to the krueppel C2H2-type zinc-finger protein family.,similarity:Contains 1 SCAN box domain.,similarity:Contains 13 C2H2-type zinc fingers.,tissue specificity:Preferentially expressed in differentiating myeloid cells.,

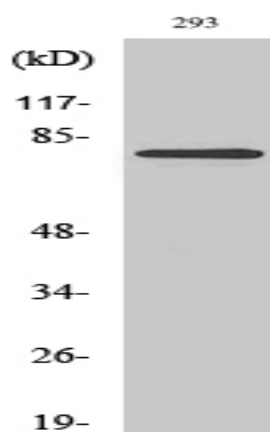
**Subcellular Location :**

Nucleus.

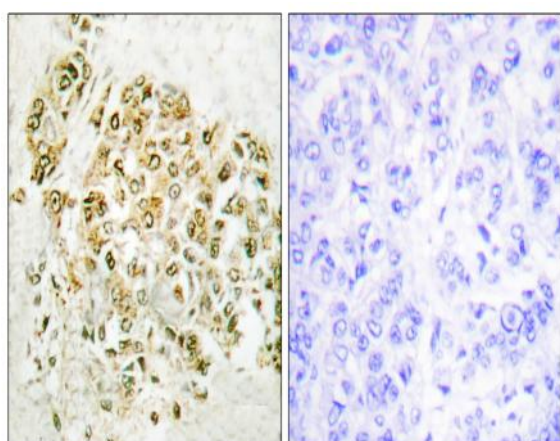
**Expression :**

Preferentially expressed in differentiating myeloid cells. Detected in osteoblasts.

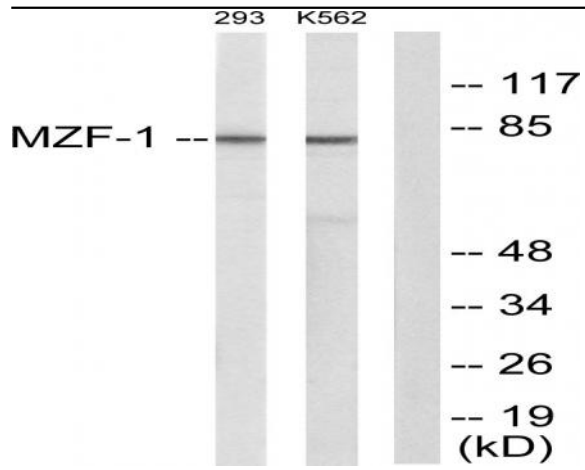
## Products Images



Western Blot analysis of various cells using MZF-1 Polyclonal Antibody diluted at 1:2000 cells nucleus extracted by Minute TM Cytoplasmic and Nuclear Fractionation kit (SC-003, Inventbiotech, MN, USA).



Immunohistochemistry analysis of paraffin-embedded human breast carcinoma tissue, using MZF-1 Antibody. The picture on the right is blocked with the synthesized peptide.



Western blot analysis of lysates from 293 and K562 cells, using MZF-1 Antibody. The lane on the right is blocked with the synthesized peptide.