

NBK Polyclonal Antibody

Catalog No :	YT2983
Reactivity :	Human;Mouse
Applications :	WB;IHC;IF;ELISA
Target :	NBK
Fields :	>>Endocrine resistance
Gene Name :	BIK
Protein Name :	Bcl-2-interacting killer
Human Gene Id :	638
Human Swiss Prot No :	Q13323
Mouse Swiss Prot No :	O70337
Immunogen :	The antiserum was produced against synthesized peptide derived from human BIK. AA range:18-67
Specificity :	NBK Polyclonal Antibody detects endogenous levels of NBK protein.
Formulation :	Liquid in PBS containing 50% glycerol, 0.5% BSA and 0.02% sodium azide.
Source :	Polyclonal, Rabbit,IgG
Dilution :	WB 1:500 - 1:2000. IHC 1:100 - 1:300. IF 1:200 - 1:1000. ELISA: 1:10000. Not yet tested in other applications.
Purification :	The antibody was affinity-purified from rabbit antiserum by affinity-chromatography using epitope-specific immunogen.
Concentration :	1 mg/ml
Storage Stability :	-15°C to -25°C/1 year(Do not lower than -25°C)

Observed Band : 30 25kD

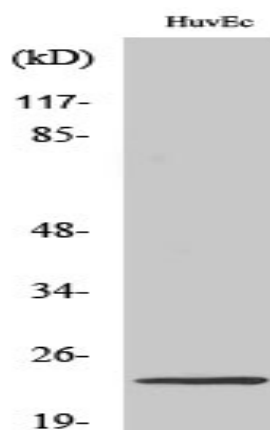
Background : The protein encoded by this gene shares a critical BH3 domain with other death-promoting proteins, such as BID, BAK, BAD and BAX, that is required for its pro-apoptotic activity, and for interaction with anti-apoptotic members of the BCL2 family, and viral survival-promoting proteins. Since the activity of this protein is suppressed in the presence of survival-promoting proteins, it is suggested as a likely target for anti-apoptotic proteins. [provided by RefSeq, Sep 2011],

Function : domain: Intact BH3 motif is required by BIK, BID, BAK, BAD and BAX for their pro-apoptotic activity and for their interaction with anti-apoptotic members of the Bcl-2 family., function: Accelerates programmed cell death. Binding to the apoptosis repressors Bcl-X(L), BHRF1, Bcl-2 or its adenovirus homolog E1B 19k protein suppresses this death-promoting activity. Does not interact with BAX., subcellular location: Around the nuclear envelope, and in cytoplasmic membranes.,

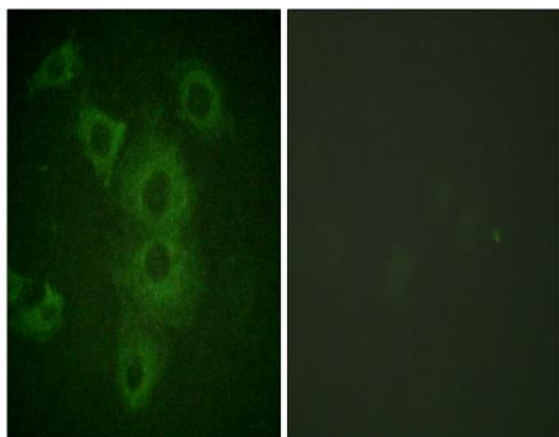
Subcellular Location : Endomembrane system; Single-pass membrane protein. Mitochondrion membrane ; Single-pass membrane protein . Around the nuclear envelope, and in cytoplasmic membranes.

Expression : B-cell, Lymph, Lymphoid,

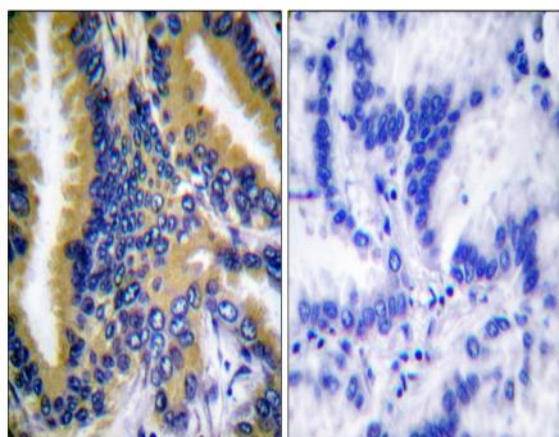
Products Images



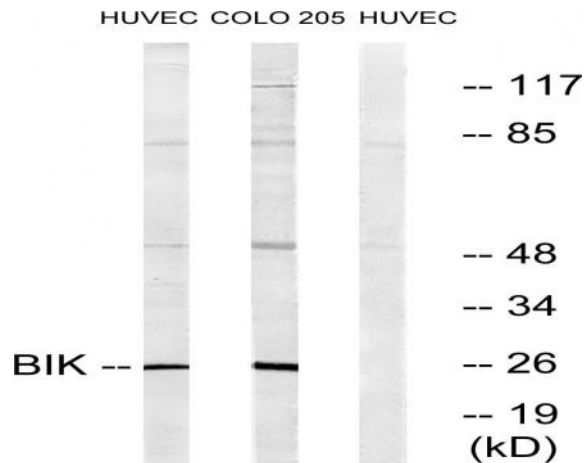
Western Blot analysis of various cells using NBK Polyclonal Antibody diluted at 1:500



Immunofluorescence analysis of HUVEC cells, using BIK Antibody. The picture on the right is blocked with the synthesized peptide.



Immunohistochemistry analysis of paraffin-embedded human lung carcinoma tissue, using BIK Antibody. The picture on the right is blocked with the synthesized peptide.



Western blot analysis of lysates from HUVEC/COLO205, using BIK Antibody. The lane on the right is blocked with the synthesized peptide.