

Olfactory receptor 10J6 Polyclonal Antibody

Catalog No :	YT3261
Reactivity :	Human;Rat;Mouse;
Applications :	WB;IF;ELISA
Target :	Olfactory receptor 10J6
Gene Name :	OR10J6P
Protein Name :	Putative olfactory receptor 10J6
Human Gene Id :	401973
Human Swiss Prot No :	Q8NGY7
Immunogen :	The antiserum was produced against synthesized peptide derived from human OR10J6. AA range:227-276
Specificity :	Olfactory receptor 10J6 Polyclonal Antibody detects endogenous levels of Olfactory receptor 10J6 protein.
Formulation :	Liquid in PBS containing 50% glycerol, 0.5% BSA and 0.02% sodium azide.
Source :	Polyclonal, Rabbit,IgG
Dilution :	WB 1:500 - 1:2000. IF 1:200 - 1:1000. ELISA: 1:40000. Not yet tested in other applications.
Purification :	The antibody was affinity-purified from rabbit antiserum by affinity-chromatography using epitope-specific immunogen.
Concentration :	1 mg/ml
Storage Stability :	-15°C to -25°C/1 year(Do not lower than -25°C)
Observed Band :	31kD

Background :

Olfactory receptors interact with odorant molecules in the nose, to initiate a neuronal response that triggers the perception of a smell. The olfactory receptor proteins are members of a large family of G-protein-coupled receptors (GPCR) arising from single coding-exon genes. Olfactory receptors share a 7-transmembrane domain structure with many neurotransmitter and hormone receptors and are responsible for the recognition and G protein-mediated transduction of odorant signals. The olfactory receptor gene family is the largest in the genome. The nomenclature assigned to the olfactory receptor genes and proteins for this organism is independent of other organisms. [provided by RefSeq, Jul 2008],

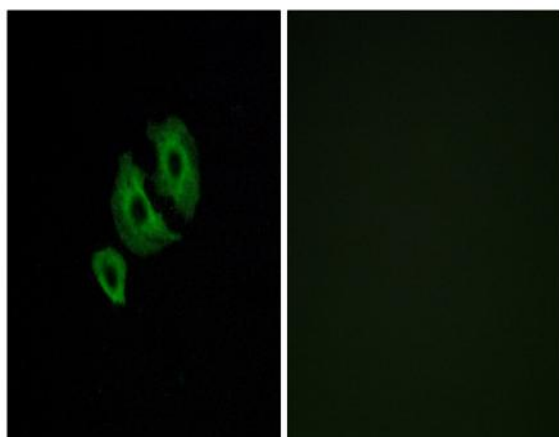
Function :

caution:Could be the product of a pseudogene.,function:Odorant receptor
.,similarity:Belongs to the G-protein coupled receptor 1 family.,

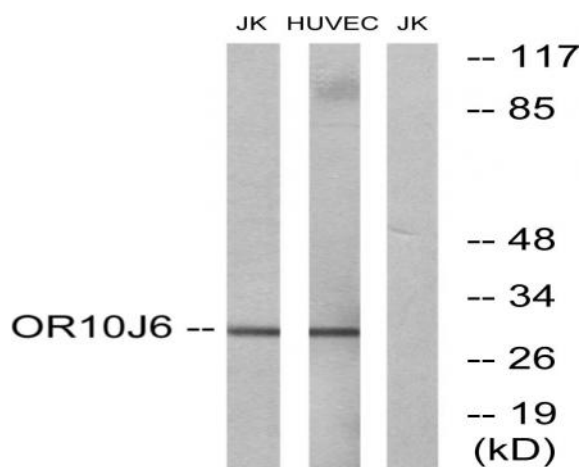
Subcellular Location :

Cell membrane; Multi-pass membrane protein.

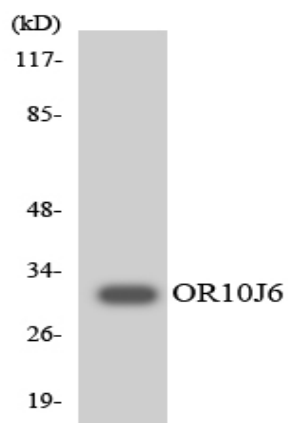
Products Images



Immunofluorescence analysis of A549 cells, using OR10J6 Antibody. The picture on the right is blocked with the synthesized peptide.



Western blot analysis of lysates from Jurkat and HUVEC cells, using OR10J6 Antibody. The lane on the right is blocked with the synthesized peptide.



Western blot analysis of the lysates from COLO205 cells using OR10J6 antibody.