

Olfactory receptor 1D2 Polyclonal Antibody

Catalog No :	YT3282
Reactivity :	Human;Rat;Mouse;
Applications :	WB;IF;ELISA
Target :	Olfactory receptor 1D2
Fields :	>>Olfactory transduction
Gene Name :	OR1D2
Protein Name :	Olfactory receptor 1D2
Human Gene Id :	4991
Human Swiss Prot No :	P34982
Immunogen :	The antiserum was produced against synthesized peptide derived from human OR1D2. AA range:201-250
Specificity :	Olfactory receptor 1D2 Polyclonal Antibody detects endogenous levels of Olfactory receptor 1D2 protein.
Formulation :	Liquid in PBS containing 50% glycerol, 0.5% BSA and 0.02% sodium azide.
Source :	Polyclonal, Rabbit,IgG
Dilution :	WB 1:500 - 1:2000. IF 1:200 - 1:1000. ELISA: 1:20000. Not yet tested in other applications.
Purification :	The antibody was affinity-purified from rabbit antiserum by affinity-chromatography using epitope-specific immunogen.
Concentration :	1 mg/ml
Storage Stability :	-15°C to -25°C/1 year(Do not lower than -25°C)

Observed Band : 40kD

Cell Pathway : Olfactory transduction;

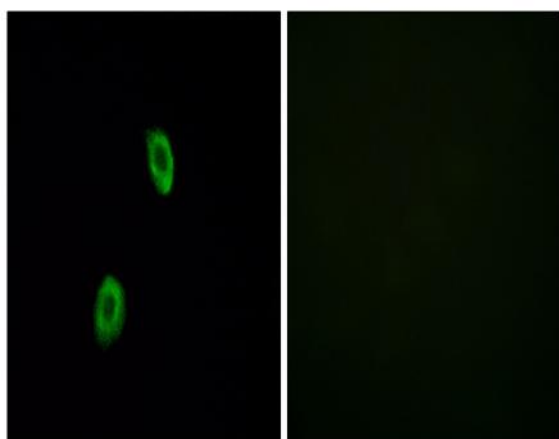
Background : olfactory receptor family 1 subfamily D member 2(OR1D2) Homo sapiens
Olfactory receptors interact with odorant molecules in the nose, to initiate a neuronal response that triggers the perception of a smell. The olfactory receptor proteins are members of a large family of G-protein-coupled receptors (GPCR) arising from single coding-exon genes. Olfactory receptors share a 7-transmembrane domain structure with many neurotransmitter and hormone receptors and are responsible for the recognition and G protein-mediated transduction of odorant signals. The olfactory receptor gene family is the largest in the genome. The nomenclature assigned to the olfactory receptor genes and proteins for this organism is independent of other organisms. [provided by RefSeq, Jul 2008],

Function : function:Odorant receptor .,similarity:Belongs to the G-protein coupled receptor 1 family.,

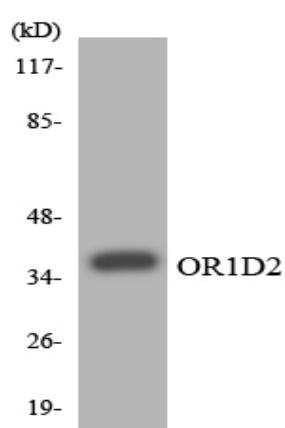
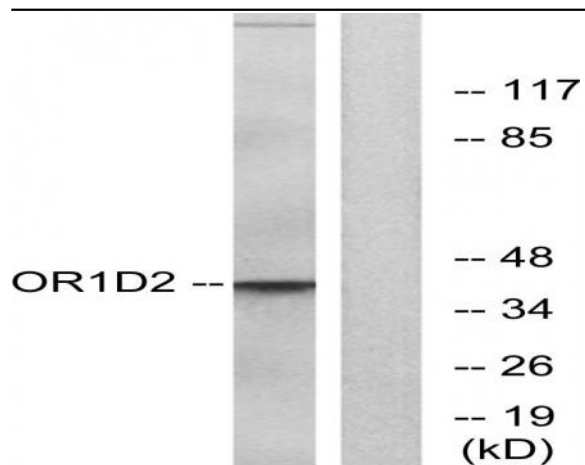
Subcellular Location : Cell membrane ; Multi-pass membrane protein . In spermatazoa is localized in the midpiece and is translocated to the head region upon receptor stimulation with bourgeonal.

Expression : Expressed in testis. Expressed in spermatazoa (at protein level). Expressed in olfactory epithelium.

Products Images



Immunofluorescence analysis of HUVEC cells, using OR1D2 Antibody. The picture on the right is blocked with the synthesized peptide.



Western blot analysis of the lysates from HepG2 cells using OR1D2 antibody.