

## Nectin 3 Polyclonal Antibody

|                              |   |
|------------------------------|---|
| <b>Catalog No :</b>          | YT3024  |
| <b>Reactivity :</b>          | Human;Mouse   |
| <b>Applications :</b>        | WB;ELISA  |
| <b>Target :</b>              | Nectin 3  |
| <b>Fields :</b>              | >>Cell adhesion molecules;>>Adherens junction   |
| <b>Gene Name :</b>           | PVRL3   |
| <b>Protein Name :</b>        | Poliovirus receptor-related protein 3   |
| <b>Human Gene Id :</b>       | 25945   |
| <b>Human Swiss Prot No :</b> | Q9NQS3  |
| <b>Mouse Gene Id :</b>       | 58998   |
| <b>Mouse Swiss Prot No :</b> | Q9JLB9  |
| <b>Immunogen :</b>           | The antiserum was produced against synthesized peptide derived from human PVRL3. AA range:184-233                     |
| <b>Specificity :</b>         | Nectin 3 Polyclonal Antibody detects endogenous levels of Nectin 3 protein.   |
| <b>Formulation :</b>         | Liquid in PBS containing 50% glycerol, 0.5% BSA and 0.02% sodium azide.   |
| <b>Source :</b>              | Polyclonal, Rabbit,IgG  |
| <b>Dilution :</b>            | WB 1:500 - 1:2000. ELISA: 1:5000. Not yet tested in other applications.   |
| <b>Purification :</b>        | The antibody was affinity-purified from rabbit antiserum by affinity-chromatography using epitope-specific immunogen. |
| <b>Concentration :</b>       | 1 mg/ml   |

**Storage Stability :** -15°C to -25°C/1 year(Do not lower than -25°C)

**Observed Band :** 61kD

**Cell Pathway :** Cell adhesion molecules (CAMs);Adherens\_Junction;

**Background :** This gene encodes a member of the nectin family of proteins, which function as adhesion molecules at adherens junctions. This family member interacts with other nectin-like proteins and with afadin, a filamentous actin-binding protein involved in the regulation of directional motility, cell proliferation and survival. This gene plays a role in ocular development involving the ciliary body. Mutations in this gene are believed to result in congenital ocular defects. Alternative splicing results in multiple transcript variants. [provided by RefSeq, Aug 2011],

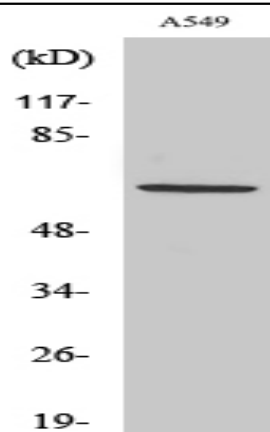
**Function :** function:Plays a role in cell-cell adhesion through heterophilic trans-interactions with nectin-like proteins or nectins, such as trans-interaction with PVRL2/nectin-2 at Sertoli-spermatid junctions. Trans-interaction with PVR induces activation of CDC42 and RAC small G proteins through common signaling molecules such as SRC and RAP1. Also involved in the formation of cell-cell junctions, including adherens junctions and synapses. Induces endocytosis-mediated down-regulation of PVR from the cell surface, resulting in reduction of cell movement and proliferation. Plays a role in the morphology of the ciliary body.,similarity:Belongs to the nectin family.,similarity:Contains 1 Ig-like V-type (immunoglobulin-like) domain.,similarity:Contains 2 Ig-like C2-type (immunoglobulin-like) domains.,subunit:Cis- and trans-homodimer. Can form trans-heterodimers with PVRL1/nectin-1, PVRL2/nectin-2, PVR

**Subcellular Location :** Cell membrane ; Single-pass membrane protein . Cell junction, synapse, postsynaptic cell membrane .

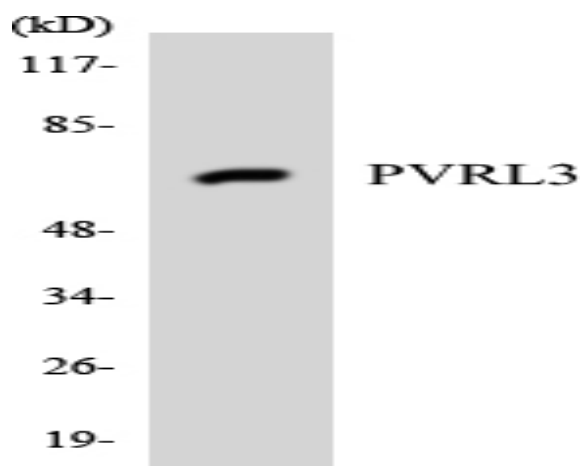
**Expression :** Predominantly expressed in testis and placenta as well as in many cell lines, including epithelial cell lines.

---

## Products Images



Western Blot analysis of various cells using Nectin 3 Polyclonal Antibody



Western blot analysis of the lysates from HUVECcells using PVRL3 antibody.