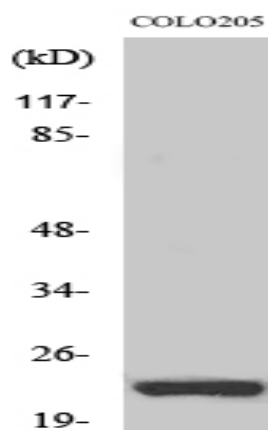


NEEP21 Polyclonal Antibody

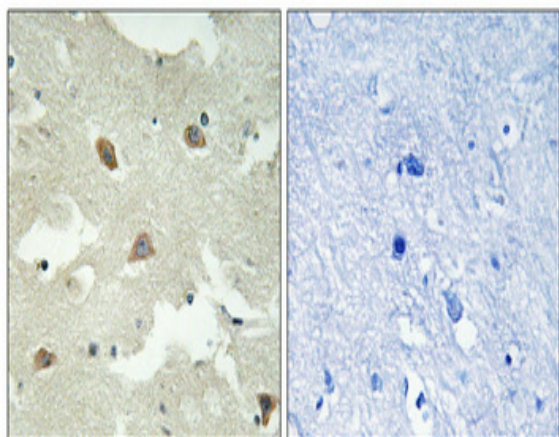
Catalog No :	YT3028
Reactivity :	Human;Mouse;Rat
Applications :	WB;IHC;IF;ELISA
Target :	NEEP21
Gene Name :	NSG1
Protein Name :	Neuron-specific protein family member 1
Human Gene Id :	27065
Human Swiss Prot No :	P42857
Mouse Gene Id :	18196
Mouse Swiss Prot No :	Q62092
Rat Gene Id :	25247
Rat Swiss Prot No :	P02683
Immunogen :	The antiserum was produced against synthesized peptide derived from human NSG1. AA range:112-161
Specificity :	NEEP21 Polyclonal Antibody detects endogenous levels of NEEP21 protein.
Formulation :	Liquid in PBS containing 50% glycerol, 0.5% BSA and 0.02% sodium azide.
Source :	Polyclonal, Rabbit,IgG
Dilution :	WB 1:500 - 1:2000. IHC 1:100 - 1:300. ELISA: 1:20000.. IF 1:50-200
Purification :	The antibody was affinity-purified from rabbit antiserum by affinity-chromatography using epitope-specific immunogen.

Concentration :	1 mg/ml
Storage Stability :	-15°C to -25°C/1 year(Do not lower than -25°C)
Observed Band :	26kD
Background :	similarity:Belongs to the NSG family.,
Function :	similarity:Belongs to the NSG family.,
Subcellular Location :	Membrane ; Single-pass type II membrane protein . Golgi apparatus, trans-Golgi network membrane . Endosome membrane . Cell projection, dendrite . Early endosome membrane . Late endosome membrane . Lysosome lumen . Recycling endosome membrane . Cytoplasmic vesicle membrane . Golgi apparatus, Golgi stack membrane . Endosome, multivesicular body membrane . Endoplasmic reticulum membrane . Endocytosed from the cell surface, thus enters into early endosomes, trafficks to late endosomes and degradates in lysosomes (By similarity). Endoplasmic reticulum targeting is essential for apoptosis (PubMed:20599942). Found in both stationary and motile endosomes. A previous study supports a type I membrane protein topology (By similarity). .
Expression :	Amygdala,Brain,Cerebellum,Testis,

Products Images



Western Blot analysis of various cells using NEEP21 Polyclonal Antibody diluted at 1:2000



Immunohistochemical analysis of paraffin-embedded Human brain. Antibody was diluted at 1:100(4° overnight). High-pressure and temperature Tris-EDTA,pH8.0 was used for antigen retrieval. Negative control (right) obtained from antibody was pre-absorbed by immunogen peptide.

