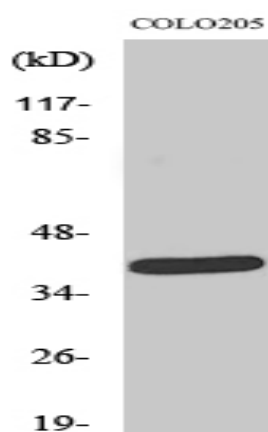


NEGR1 Polyclonal Antibody

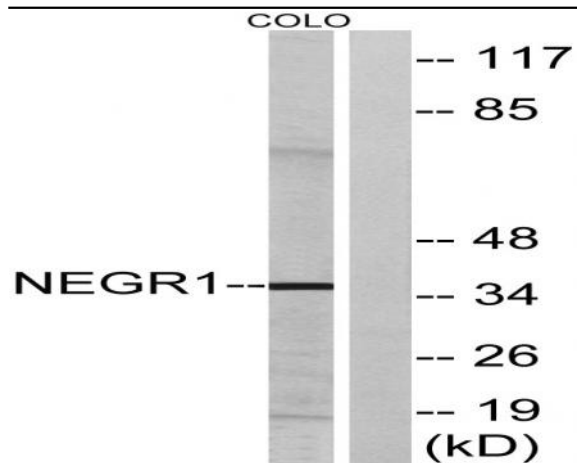
Catalog No :	YT3029
Reactivity :	Human;Mouse;Rat
Applications :	WB;ELISA
Target :	NEGR1
Fields :	>>Cell adhesion molecules
Gene Name :	NEGR1
Protein Name :	Neuronal growth regulator 1
Human Gene Id :	257194
Human Swiss Prot No :	Q7Z3B1
Mouse Gene Id :	320840
Mouse Swiss Prot No :	Q80Z24
Rat Gene Id :	59318
Rat Swiss Prot No :	Q9Z0J8
Immunogen :	The antiserum was produced against synthesized peptide derived from human NEGR1. AA range:172-221
Specificity :	NEGR1 Polyclonal Antibody detects endogenous levels of NEGR1 protein.
Formulation :	Liquid in PBS containing 50% glycerol, 0.5% BSA and 0.02% sodium azide.
Source :	Polyclonal, Rabbit,IgG
Dilution :	WB 1:500 - 1:2000. ELISA: 1:20000. Not yet tested in other applications.

Purification :	The antibody was affinity-purified from rabbit antiserum by affinity-chromatography using epitope-specific immunogen.
Concentration :	1 mg/ml
Storage Stability :	-15°C to -25°C/1 year(Do not lower than -25°C)
Observed Band :	35kD
Cell Pathway :	Cell adhesion molecules (CAMs);
Background :	function:May be involved in cell-adhesion. May function as a trans-neural growth-promoting factor in regenerative axon sprouting in the mammalian brain.,similarity:Belongs to the immunoglobulin superfamily. IgLON family.,similarity:Contains 3 Ig-like C2-type (immunoglobulin-like) domains.,
Function :	function:May be involved in cell-adhesion. May function as a trans-neural growth-promoting factor in regenerative axon sprouting in the mammalian brain.,similarity:Belongs to the immunoglobulin superfamily. IgLON family.,similarity:Contains 3 Ig-like C2-type (immunoglobulin-like) domains.,
Subcellular Location :	Cell membrane ; Lipid-anchor, GPI-anchor .
Expression :	Amygdala,Brain,Fetal kidney,Testis,

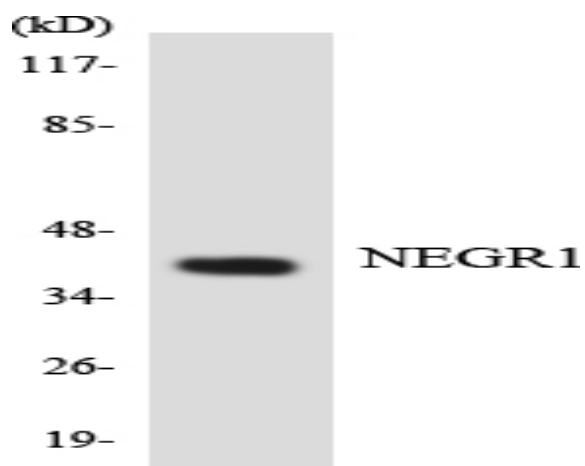
Products Images



Western Blot analysis of various cells using NEGR1 Polyclonal Antibody



Western blot analysis of lysates from COLO cells, using NEGR1 Antibody. The lane on the right is blocked with the synthesized peptide.



Western blot analysis of the lysates from COLO205 cells using NEGR1 antibody.