

IGFL3 Polyclonal Antibody

Catalog No :	YN0227
Reactivity :	Human;Rat;Mouse;
Applications :	WB;ELISA
Target :	IGFL3
Gene Name :	IGFL3 UNQ483/PRO982
Protein Name :	Insulin growth factor-like family member 3
Human Gene Id :	388555
Human Swiss Prot No :	Q6UXB1
Immunogen :	Synthesized peptide derived from human protein . at AA range: 10-90
Specificity :	IGFL3 Polyclonal Antibody detects endogenous levels of protein.
Formulation :	Liquid in PBS containing 50% glycerol, and 0.02% sodium azide.
Source :	Polyclonal, Rabbit,IgG
Dilution :	WB 1:500-2000 ELISA 1:5000-20000
Purification :	The antibody was affinity-purified from rabbit antiserum by affinity-chromatography using epitope-specific immunogen.
Concentration :	1 mg/ml
Storage Stability :	-15°C to -25°C/1 year(Do not lower than -25°C)
Observed Band :	13kD
Background :	IGF like family member 3(IGFL3) Homo sapiens IGFL3 belongs to the insulin-like growth factor (IGF; see MIM 147440) family of signaling molecules that play critical roles in cellular energy metabolism and in growth and development,

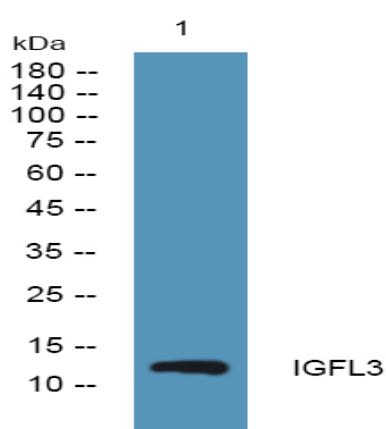
especially prenatal growth (Emtage et al., 2006 [PubMed 16890402]).[supplied by OMIM, Mar 2008],

Function : similarity:Belongs to the IGFL family.,

Subcellular Location : Secreted .

Expression : Detected in the cerebellum.

Products Images



Western blot analysis of lysates from HCT116 cells, primary antibody was diluted at 1:1000, 4° over night