

Olfactory receptor 2AT4 Polyclonal Antibody

Catalog No :	YT3298
Reactivity :	Human;Rat;Mouse;
Applications :	IF;ELISA
Target :	Olfactory receptor 2AT4
Fields :	>>Olfactory transduction
Gene Name :	OR2AT4
Protein Name :	Olfactory receptor 2AT4
Human Gene Id :	341152
Human Swiss Prot No :	A6NND4
Immunogen :	The antiserum was produced against synthesized peptide derived from human OR2AT4. AA range:271-320
Specificity :	Olfactory receptor 2AT4 Polyclonal Antibody detects endogenous levels of Olfactory receptor 2AT4 protein.
Formulation :	Liquid in PBS containing 50% glycerol, 0.5% BSA and 0.02% sodium azide.
Source :	Polyclonal, Rabbit,IgG
Dilution :	IF 1:200 - 1:1000. ELISA: 1:20000. Not yet tested in other applications.
Purification :	The antibody was affinity-purified from rabbit antiserum by affinity-chromatography using epitope-specific immunogen.
Concentration :	1 mg/ml
Storage Stability :	-15°C to -25°C/1 year(Do not lower than -25°C)
Molecularweight :	36kD

Cell Pathway : Olfactory transduction;

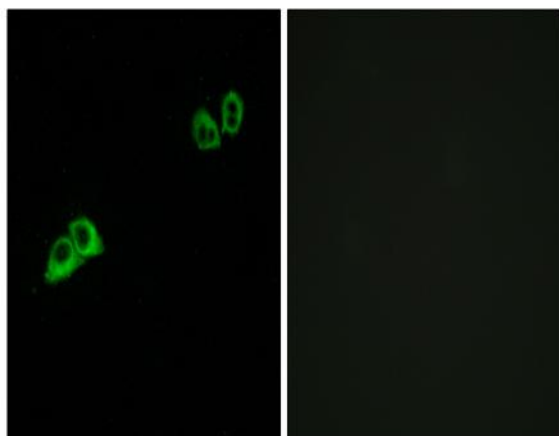
Background : Olfactory receptors interact with odorant molecules in the nose, to initiate a neuronal response that triggers the perception of a smell. The olfactory receptor proteins are members of a large family of G-protein-coupled receptors (GPCR) arising from single coding-exon genes. Olfactory receptors share a 7-transmembrane domain structure with many neurotransmitter and hormone receptors and are responsible for the recognition and G protein-mediated transduction of odorant signals. The olfactory receptor gene family is the largest in the genome. The nomenclature assigned to the olfactory receptor genes and proteins for this organism is independent of other organisms. [provided by RefSeq, Jul 2008],

Function : function:Odorant receptor .,similarity:Belongs to the G-protein coupled receptor 1 family.,

Subcellular Location : Cell membrane ; Multi-pass membrane protein .

Expression : Detected in the keratinocytes of the epidermis (at protein level) (PubMed:24999593). Detected in hair follicles in proximal outer root sheath and hair matrix keratinocytes (at protein level) (PubMed:30228264).

Products Images



Immunofluorescence analysis of MCF7 cells, using OR2AT4 Antibody. The picture on the right is blocked with the synthesized peptide.