

## Neurexophilin-3 Polyclonal Antibody

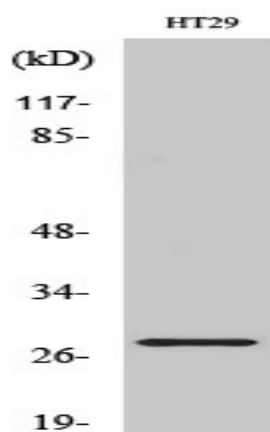
<b>Catalog No :</b>	YT3059
<b>Reactivity :</b>	Human;Mouse;Rat
<b>Applications :</b>	WB;IHC;IF;ELISA
<b>Target :</b>	Neurexophilin-3
<b>Gene Name :</b>	NXPH3
<b>Protein Name :</b>	Neurexophilin-3
<b>Human Gene Id :</b>	11248
<b>Human Swiss Prot No :</b>	O95157
<b>Mouse Gene Id :</b>	104079
<b>Mouse Swiss Prot No :</b>	Q91VX5
<b>Rat Gene Id :</b>	59315
<b>Rat Swiss Prot No :</b>	Q9Z2N5
<b>Immunogen :</b>	The antiserum was produced against synthesized peptide derived from human NXPH3. AA range:158-207
<b>Specificity :</b>	Neurexophilin-3 Polyclonal Antibody detects endogenous levels of Neurexophilin-3 protein.
<b>Formulation :</b>	Liquid in PBS containing 50% glycerol, 0.5% BSA and 0.02% sodium azide.
<b>Source :</b>	Polyclonal, Rabbit,IgG
<b>Dilution :</b>	WB 1:500 - 1:2000. IHC 1:100 - 1:300. ELISA: 1:10000.. IF 1:50-200
<b>Purification :</b>	The antibody was affinity-purified from rabbit antiserum by affinity-chromatography using epitope-specific immunogen.

---

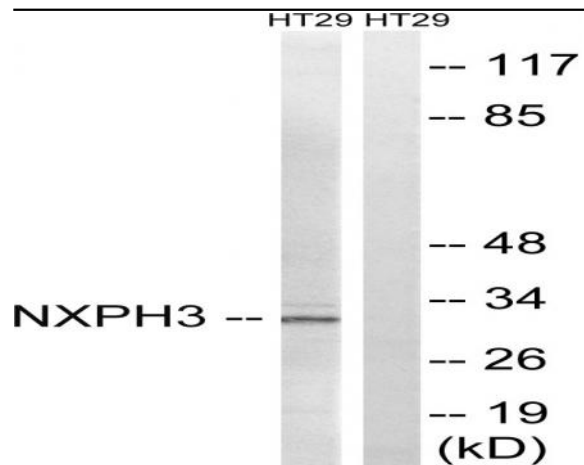
<b>Concentration :</b>	1 mg/ml
<b>Storage Stability :</b>	-15°C to -25°C/1 year(Do not lower than -25°C)
<b>Observed Band :</b>	30kD
<b>Background :</b>	function:May be signaling molecules that resemble neuropeptides. Ligand for alpha-neurexins.,PTM:May be proteolytically processed at the boundary between the N-terminal non-conserved and the central conserved domain in neuron-like cells.,similarity:Belongs to the neurexophilin family.,tissue specificity:Highest level in brain.,
<b>Function :</b>	function:May be signaling molecules that resemble neuropeptides. Ligand for alpha-neurexins.,PTM:May be proteolytically processed at the boundary between the N-terminal non-conserved and the central conserved domain in neuron-like cells.,similarity:Belongs to the neurexophilin family.,tissue specificity:Highest level in brain.,
<b>Subcellular Location :</b>	Secreted .
<b>Expression :</b>	Highest level in brain.

---

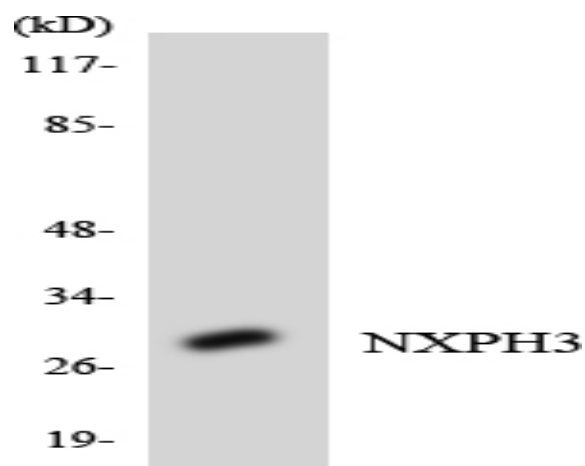
## Products Images



Western Blot analysis of various cells using Neurexophilin-3 Polyclonal Antibody



Western blot analysis of lysates from HT-29 cells, using NXP3 Antibody. The lane on the right is blocked with the synthesized peptide.



Western blot analysis of the lysates from HepG2 cells using NXP3 antibody.



Immunohistochemical analysis of paraffin-embedded human tonsil. 1, Antibody was diluted at 1:200(4° overnight). 2, Tris-EDTA,pH9.0 was used for antigen retrieval. 3,Secondary antibody was diluted at 1:200(room temperature, 30min).