

## Neuroplastin Polyclonal Antibody

|                              |   |
|------------------------------|---|
| <b>Catalog No :</b>          | YT3075  |
| <b>Reactivity :</b>          | Human;Mouse;Rat   |
| <b>Applications :</b>        | IHC;IF;ELISA  |
| <b>Target :</b>              | Neuroplastin  |
| <b>Gene Name :</b>           | NPTN  |
| <b>Protein Name :</b>        | Neuroplastin  |
| <b>Human Gene Id :</b>       | 27020   |
| <b>Human Swiss Prot No :</b> | Q9Y639  |
| <b>Mouse Gene Id :</b>       | 20320   |
| <b>Mouse Swiss Prot No :</b> | P97300  |
| <b>Rat Gene Id :</b>         | 56064   |
| <b>Rat Swiss Prot No :</b>   | P97546  |
| <b>Immunogen :</b>           | The antiserum was produced against synthesized peptide derived from human NPTN. AA range:106-155                      |
| <b>Specificity :</b>         | Neuroplastin Polyclonal Antibody detects endogenous levels of Neuroplastin protein.                                   |
| <b>Formulation :</b>         | Liquid in PBS containing 50% glycerol, 0.5% BSA and 0.02% sodium azide.   |
| <b>Source :</b>              | Polyclonal, Rabbit,IgG  |
| <b>Dilution :</b>            | IHC 1:100 - 1:300. ELISA: 1:5000.. IF 1:50-200  |
| <b>Purification :</b>        | The antibody was affinity-purified from rabbit antiserum by affinity-chromatography using epitope-specific immunogen. |

**Concentration :** 1 mg/ml

---

**Storage Stability :** -15°C to -25°C/1 year(Do not lower than -25°C)

---

**Molecularweight :** 31kD

---

**Background :** This gene encodes a type I transmembrane protein belonging to the Ig superfamily. The protein is believed to be involved in cell-cell interactions or cell-substrate interactions. Alternative splicing results in multiple transcript variants. [provided by RefSeq, May 2009],

---

**Function :** PTM:N-glycosylated.,similarity:Contains 1 Ig-like C2-type (immunoglobulin-like) domain.,similarity:Contains 1 Ig-like V-type (immunoglobulin-like) domain.,tissue specificity:Isoform 1 is ubiquitous.,

---

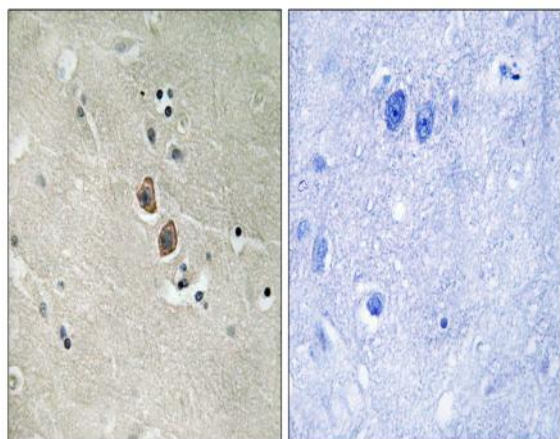
**Subcellular Location :** Cell membrane ; Single-pass type I membrane protein .; [Isoform 2]: Cell junction, synapse, postsynaptic density .

---

**Expression :** Isoform 1 is ubiquitously expressed. Isoform 2 is expressed in brain cortex and cerebellum (at protein level).

---

## Products Images



Immunohistochemistry analysis of paraffin-embedded human brain tissue, using NPTN Antibody. The picture on the right is blocked with the synthesized peptide.