

Olfactory receptor 4X1 Polyclonal Antibody

Catalog No :	YT3355
Reactivity :	Human;Rat;Mouse;
Applications :	WB;IF;ELISA
Target :	Olfactory receptor 4X1
Fields :	>>Olfactory transduction
Gene Name :	OR4X1
Protein Name :	Olfactory receptor 4X1
Human Gene Id :	390113
Human Swiss Prot No :	Q8NH49
Immunogen :	The antiserum was produced against synthesized peptide derived from human OR4X1. AA range:256-305
Specificity :	Olfactory receptor 4X1 Polyclonal Antibody detects endogenous levels of Olfactory receptor 4X1 protein.
Formulation :	Liquid in PBS containing 50% glycerol, 0.5% BSA and 0.02% sodium azide.
Source :	Polyclonal, Rabbit,IgG
Dilution :	WB 1:500 - 1:2000. IF 1:200 - 1:1000. ELISA: 1:20000. Not yet tested in other applications.
Purification :	The antibody was affinity-purified from rabbit antiserum by affinity-chromatography using epitope-specific immunogen.
Concentration :	1 mg/ml
Storage Stability :	-15°C to -25°C/1 year(Do not lower than -25°C)

Observed Band : 34kD

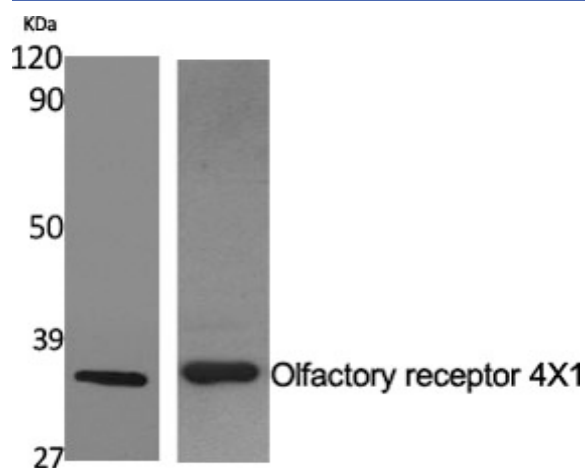
Cell Pathway : Olfactory transduction;

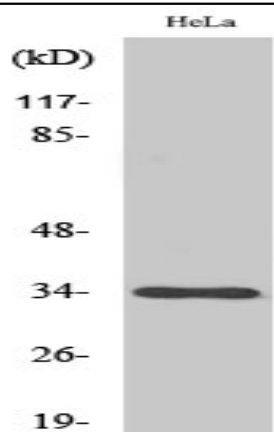
Background : Olfactory receptors interact with odorant molecules in the nose, to initiate a neuronal response that triggers the perception of a smell. The olfactory receptor proteins are members of a large family of G-protein-coupled receptors (GPCR) arising from single coding-exon genes. Olfactory receptors share a 7-transmembrane domain structure with many neurotransmitter and hormone receptors and are responsible for the recognition and G protein-mediated transduction of odorant signals. The olfactory receptor gene family is the largest in the genome. The nomenclature assigned to the olfactory receptor genes and proteins for this organism is independent of other organisms. This olfactory receptor gene is a segregating pseudogene, where some individuals have an allele that encodes a functional olfactory receptor, while other individuals have an allele encoding a

Function : function:Odorant receptor .,similarity:Belongs to the G-protein coupled receptor 1 family.,

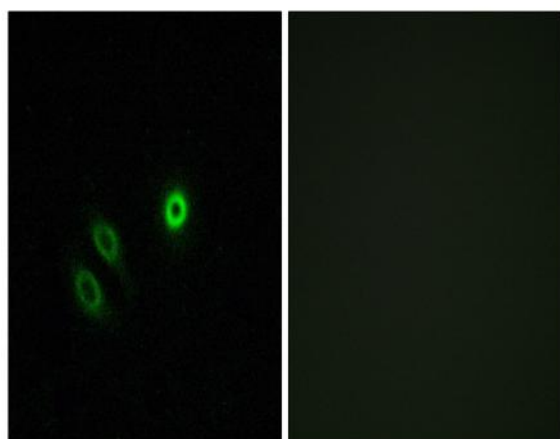
Subcellular Location : Cell membrane; Multi-pass membrane protein.

Products Images

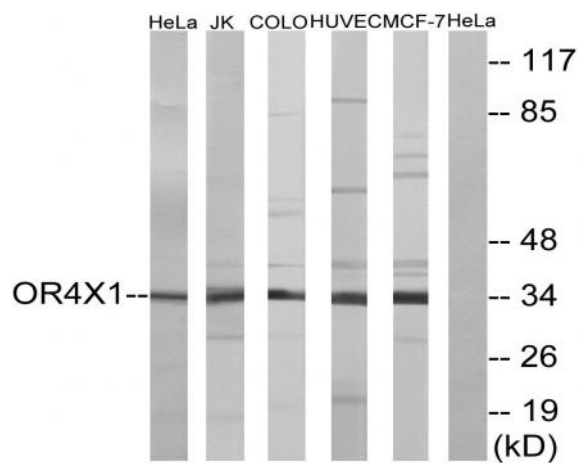




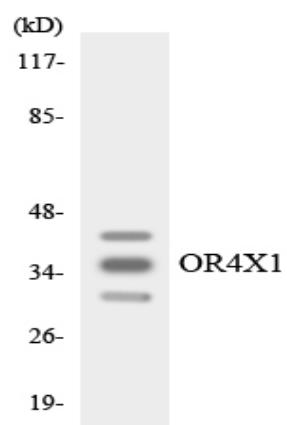
Western Blot analysis of COLO205 cells using Olfactory receptor 4X1 Polyclonal Antibody



Immunofluorescence analysis of A549 cells, using OR4X1 Antibody. The picture on the right is blocked with the synthesized peptide.



Western blot analysis of lysates from HeLa, Jurkat, HUVEC, MCF-7, and COLO cells, using OR4X1 Antibody. The lane on the right is blocked with the synthesized peptide.



Western blot analysis of the lysates from RAW264.7 cells using OR4X1 antibody.