

NKp30 Polyclonal Antibody

Catalog No :	YT3135
Reactivity :	Human;Rat
Applications :	WB;ELISA
Target :	NKp30
Fields :	>>Natural killer cell mediated cytotoxicity
Gene Name :	NCR3
Protein Name :	Natural cytotoxicity triggering receptor 3
Human Gene Id :	259197
Human Swiss Prot No :	O14931
Rat Swiss Prot No :	Q8CFD9
Immunogen :	The antiserum was produced against synthesized peptide derived from human NCR3. AA range:104-153
Specificity :	NKp30 Polyclonal Antibody detects endogenous levels of NKp30 protein.
Formulation :	Liquid in PBS containing 50% glycerol, 0.5% BSA and 0.02% sodium azide.
Source :	Polyclonal, Rabbit,IgG
Dilution :	WB 1:500 - 1:2000. ELISA: 1:40000. Not yet tested in other applications.
Purification :	The antibody was affinity-purified from rabbit antiserum by affinity-chromatography using epitope-specific immunogen.
Concentration :	1 mg/ml
Storage Stability :	-15°C to -25°C/1 year(Do not lower than -25°C)

Observed Band : 22kD

Cell Pathway : Natural killer cell mediated cytotoxicity;

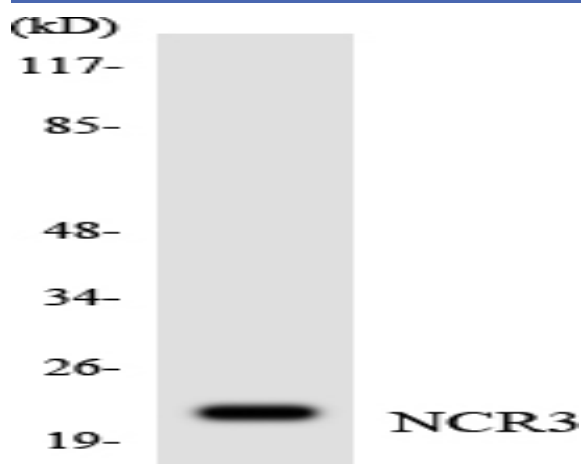
Background : The protein encoded by this gene is a natural cytotoxicity receptor (NCR) that may aid NK cells in the lysis of tumor cells. The encoded protein interacts with CD3-zeta (CD247), a T-cell receptor. A single nucleotide polymorphism in the 5' untranslated region of this gene has been associated with mild malaria susceptibility. Three transcript variants encoding different isoforms have been found for this gene.[provided by RefSeq, May 2010],

Function : function:Cytotoxicity-activating receptor that may contribute to the increased efficiency of activated natural killer (NK) cells to mediate tumor cell lysis.,polymorphism:A genetic variation in NCR3 is associated with mild malaria susceptibility [MIM:609148].,similarity:Belongs to the natural cytotoxicity receptor (NCR) family.,similarity:Contains 1 Ig-like (immunoglobulin-like) domain.,subunit:Interacts with CD3Z.,tissue specificity:Selectively expressed by all resting and activated NK cells and weakly expressed in spleen.,

Subcellular Location : Cell membrane ; Single-pass type I membrane protein .

Expression : Selectively expressed by all resting and activated NK cells and weakly expressed in spleen.

Products Images



Western blot analysis of the lysates from K562 cells using NCR3 antibody.