

Olfactory receptor 5111 Polyclonal Antibody

Catalog No :	YT3368
Reactivity :	Human;Rat;Mouse;
Applications :	WB;IF;ELISA
Target :	Olfactory receptor 5111
Fields :	>>Olfactory transduction
Gene Name :	OR5111
Protein Name :	Olfactory receptor 5111
Human Gene Id :	390063
Human Swiss Prot No :	Q9H343
Immunogen :	The antiserum was produced against synthesized peptide derived from human OR5111. AA range:265-314
Specificity :	Olfactory receptor 5111 Polyclonal Antibody detects endogenous levels of Olfactory receptor 5111 protein.
Formulation :	Liquid in PBS containing 50% glycerol, 0.5% BSA and 0.02% sodium azide.
Source :	Polyclonal, Rabbit,IgG
Dilution :	WB 1:500 - 1:2000. IF 1:200 - 1:1000. ELISA: 1:10000. Not yet tested in other applications.
Purification :	The antibody was affinity-purified from rabbit antiserum by affinity-chromatography using epitope-specific immunogen.
Concentration :	1 mg/ml
Storage Stability :	-15°C to -25°C/1 year(Do not lower than -25°C)

Observed Band : 35kD

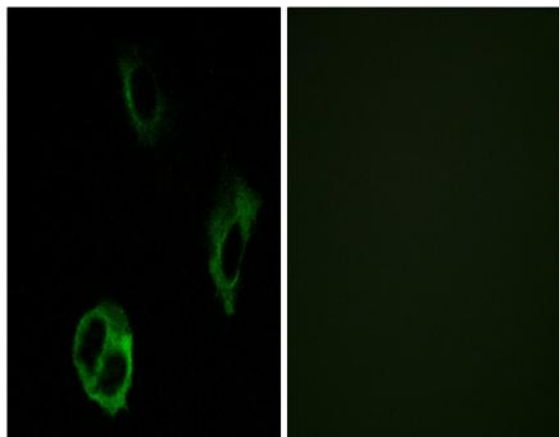
Cell Pathway : Olfactory transduction;

Background : Olfactory receptors interact with odorant molecules in the nose, to initiate a neuronal response that triggers the perception of a smell. The olfactory receptor proteins are members of a large family of G-protein-coupled receptors (GPCR) arising from single coding-exon genes. Olfactory receptors share a 7-transmembrane domain structure with many neurotransmitter and hormone receptors and are responsible for the recognition and G protein-mediated transduction of odorant signals. The olfactory receptor gene family is the largest in the genome. The nomenclature assigned to the olfactory receptor genes and proteins for this organism is independent of other organisms. [provided by RefSeq, Jul 2008],

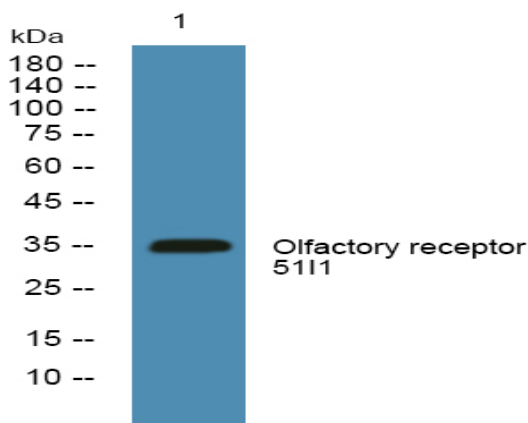
Function : function:Odorant receptor .,similarity:Belongs to the G-protein coupled receptor 1 family.,

Subcellular Location : Cell membrane; Multi-pass membrane protein.

Products Images



Immunofluorescence analysis of COS7 cells, using OR5111 Antibody. The picture on the right is blocked with the synthesized peptide.



Western blot analysis of lysates from KB cells, primary antibody was diluted at 1:1000, 4° over night