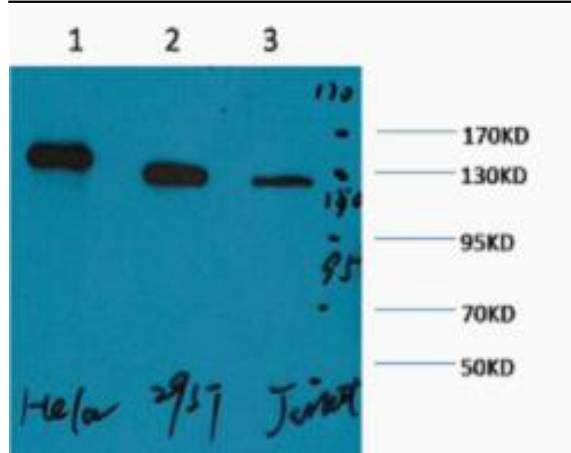


PARP Monoclonal Antibody(M3)

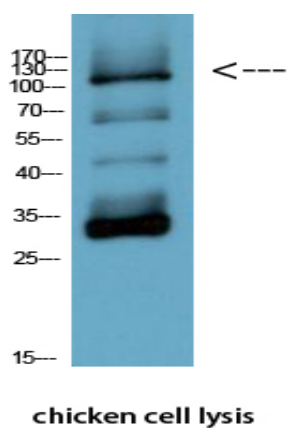
| | |
|------------------------------|--|
| Catalog No : | YM3131 |
| Reactivity : | Human;Chicken(testedbyyourcustomer?) |
| Applications : | WB |
| Target : | PARP |
| Fields : | >>Base excision repair;>>NF-kappa B signaling pathway;>>Apoptosis;>>Necroptosis;>>Diabetic cardiomyopathy |
| Gene Name : | PARP1 |
| Protein Name : | Poly [ADP-ribose] polymerase 1 |
| Human Gene Id : | 142 |
| Human Swiss Prot No : | P09874 |
| Mouse Swiss Prot No : | P11103 |
| Rat Gene Id : | 25591 |
| Rat Swiss Prot No : | P27008 |
| Immunogen : | Synthetic Peptide of PARP |
| Specificity : | The antibody detects endogenous PARP protein. |
| Formulation : | PBS, pH 7.4, containing 0.5%BSA, 0.02% sodium azide as Preservative and 50% Glycerol. |
| Source : | Monoclonal, Mouse |
| Dilution : | WB 1:1000-3000 |
| Purification : | The antibody was affinity-purified from mouse ascites by affinity-chromatography using specific immunogen. |

| | |
|-------------------------------|--|
| Storage Stability : | <u>-15°C to -25°C/1 year(Do not lower than -25°C)</u> |
| Observed Band : | <u>116kD</u> |
| Cell Pathway : | <u>Base excision repair;</u> |
| Background : | <u>This gene encodes a chromatin-associated enzyme, poly(ADP-ribose)transferase, which modifies various nuclear proteins by poly(ADP-ribose)ation. The modification is dependent on DNA and is involved in the regulation of various important cellular processes such as differentiation, proliferation, and tumor transformation and also in the regulation of the molecular events involved in the recovery of cell from DNA damage. In addition, this enzyme may be the site of mutation in Fanconi anemia, and may participate in the pathophysiology of type I diabetes. [provided by RefSeq, Jul 2008],</u> |
| Function : | <u>catalytic activity:NAD(+) + (ADP-D-ribose)(n)-acceptor = nicotinamide + (ADP-D-ribose)(n+1)-acceptor.,function:Involved in the base excision repair (BER) pathway, by catalyzing the poly(ADP-ribose)ation of a limited number of acceptor proteins involved in chromatin architecture and in DNA metabolism. This modification follows DNA damages and appears as an obligatory step in a detection/signaling pathway leading to the reparation of DNA strand breaks.,miscellaneous:The ADP-D-ribose group of NAD(+) is transferred to an acceptor carboxyl group on a histone or the enzyme itself, and further ADP-ribose groups are transferred to the 2'-position of the terminal adenosine moiety, building up a polymer with an average chain length of 20-30 units.,PTM:Phosphorylated by PRKDC. Phosphorylated upon DNA damage, probably by ATM or ATR.,PTM:Poly-ADP-riboseylated by PARP2.,similarity:Contains 1 BRCT</u> |
| Subcellular Location : | <u>Nucleus . Nucleus, nucleolus . Chromosome . Localizes to sites of DNA damage.</u> |
| Expression : | <u>Brain,Colon carcinoma,Fibroblast,Lung,Ovarian carcinoma,Skin,</u> |

Products Images



Western blot analysis of 1) HeLa, 2) 293T, 3) Jurkat, diluted at 1:2000. cells nucleus extracted by Minute TM Cytoplasmic and Nuclear Fractionation kit (SC-003, Inventbiotech, MN, USA).



Western Blot analysis of chicken cell lysis using Antibody diluted at 1:1000