

Olfactory receptor 5M1 Polyclonal Antibody

| | |
|------------------------------|---|
| Catalog No : | YT3411 |
| Reactivity : | Human;Rat;Mouse; |
| Applications : | IF;ELISA |
| Target : | Olfactory receptor 5M1 |
| Fields : | >>Olfactory transduction |
| Gene Name : | OR5M1 |
| Protein Name : | Olfactory receptor 5M1 |
| Human Gene Id : | 390168 |
| Human Swiss Prot No : | Q8NGP8 |
| Immunogen : | The antiserum was produced against synthesized peptide derived from human OR5M1. AA range:240-289 |
| Specificity : | Olfactory receptor 5M1 Polyclonal Antibody detects endogenous levels of Olfactory receptor 5M1 protein. |
| Formulation : | Liquid in PBS containing 50% glycerol, 0.5% BSA and 0.02% sodium azide. |
| Source : | Polyclonal, Rabbit,IgG |
| Dilution : | IF 1:200 - 1:1000. ELISA: 1:5000. Not yet tested in other applications. |
| Purification : | The antibody was affinity-purified from rabbit antiserum by affinity-chromatography using epitope-specific immunogen. |
| Concentration : | 1 mg/ml |
| Storage Stability : | -15°C to -25°C/1 year(Do not lower than -25°C) |
| Molecularweight : | 36kD |

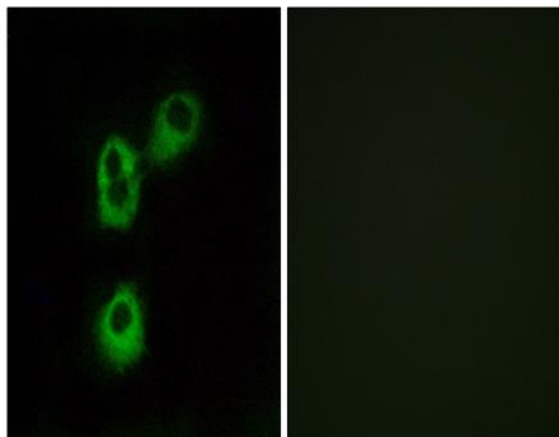
Cell Pathway : Olfactory transduction;

Background : olfactory receptor family 5 subfamily M member 1 (OR5M1) Homo sapiens Olfactory receptors interact with odorant molecules in the nose, to initiate a neuronal response that triggers the perception of a smell. The olfactory receptor proteins are members of a large family of G-protein-coupled receptors (GPCR) arising from single coding-exon genes. Olfactory receptors share a 7-transmembrane domain structure with many neurotransmitter and hormone receptors and are responsible for the recognition and G protein-mediated transduction of odorant signals. The olfactory receptor gene family is the largest in the genome. The nomenclature assigned to the olfactory receptor genes and proteins for this organism is independent of other organisms. [provided by RefSeq, Jul 2008],

Function : function:Odorant receptor .,similarity:Belongs to the G-protein coupled receptor 1 family.,

Subcellular Location : Cell membrane; Multi-pass membrane protein.

Products Images



Immunofluorescence analysis of MCF7 cells, using OR5M1 Antibody. The picture on the right is blocked with the synthesized peptide.