

Pbx 4 Polyclonal Antibody

| | |
|------------------------------|---|
| Catalog No : | YT3613 |
| Reactivity : | Human;Rat;Mouse; |
| Applications : | IHC;IF;ELISA |
| Target : | Pbx 4 |
| Gene Name : | PBX4 |
| Protein Name : | Pre-B-cell leukemia transcription factor 4 |
| Human Gene Id : | 80714 |
| Human Swiss Prot No : | Q9BYU1 |
| Mouse Swiss Prot No : | Q99NE9 |
| Immunogen : | Synthesized peptide derived from Pbx 4 . at AA range: 220-300 |
| Specificity : | Pbx 4 Polyclonal Antibody detects endogenous levels of Pbx 4 protein. |
| Formulation : | Liquid in PBS containing 50% glycerol, 0.5% BSA and 0.02% sodium azide. |
| Source : | Polyclonal, Rabbit,IgG |
| Dilution : | IHC 1:100 - 1:300. ELISA: 1:20000.. IF 1:50-200 |
| Purification : | The antibody was affinity-purified from rabbit antiserum by affinity-chromatography using epitope-specific immunogen. |
| Concentration : | 1 mg/ml |
| Storage Stability : | -15°C to -25°C/1 year(Do not lower than -25°C) |
| Molecularweight : | 41kD |

Background :

This gene encodes a member of the pre-B cell leukemia transcription factor family. These proteins are homeobox proteins that play critical roles in embryonic development and cellular differentiation both as Hox cofactors and through Hox-independent pathways. The encoded protein contains a homeobox DNA-binding domain, but specific functions of the protein have not been determined. Alternatively spliced transcript variants have been observed for this gene. [provided by RefSeq, May 2011],

Function :

similarity:Belongs to the TALE/PBX homeobox family.,similarity:Contains 1 homeobox DNA-binding domain.,

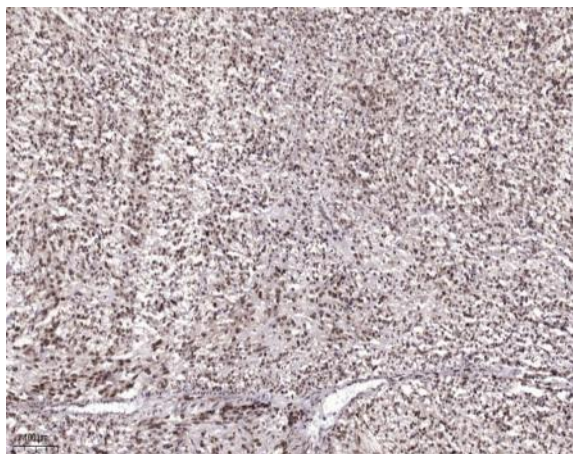
Subcellular
Location :

Nucleus .

Expression :

Testis,

Products Images



Immunohistochemical analysis of paraffin-embedded human Colon cancer. 1, Antibody was diluted at 1:200(4° overnight). 2, Tris-EDTA,pH9.0 was used for antigen retrieval. 3,Secondary antibody was diluted at 1:200(room temperature, 45min).