

Olfactory receptor 6A2 Polyclonal Antibody

Catalog No :	YT3422
Reactivity :	Human;Rat;Mouse;
Applications :	WB;ELISA
Target :	Olfactory receptor 6A2
Fields :	>>Olfactory transduction
Gene Name :	OR6A2
Protein Name :	Olfactory receptor 6A2
Human Gene Id :	8590
Human Swiss Prot No :	O95222/Q3MJC7
Immunogen :	The antiserum was produced against synthesized peptide derived from human OR6A2. AA range:58-107
Specificity :	Olfactory receptor 6A2 Polyclonal Antibody detects endogenous levels of Olfactory receptor 6A2 protein.
Formulation :	Liquid in PBS containing 50% glycerol, 0.5% BSA and 0.02% sodium azide.
Source :	Polyclonal, Rabbit,IgG
Dilution :	WB 1:500 - 1:2000. ELISA: 1:20000. Not yet tested in other applications.
Purification :	The antibody was affinity-purified from rabbit antiserum by affinity-chromatography using epitope-specific immunogen.
Concentration :	1 mg/ml
Storage Stability :	-15°C to -25°C/1 year(Do not lower than -25°C)
Observed Band :	36kD

Cell Pathway : Olfactory transduction;

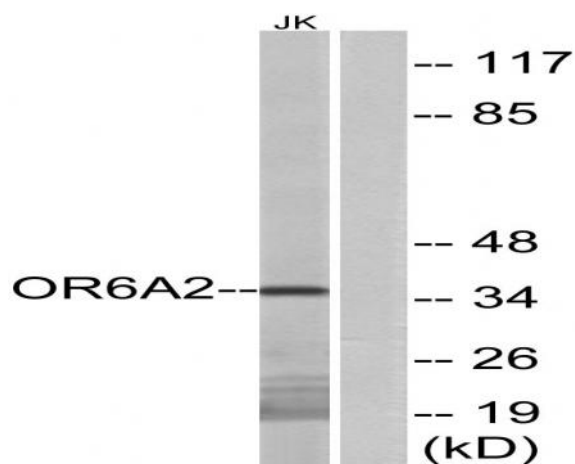
Background : olfactory receptor family 6 subfamily A member 2(OR6A2) Homo sapiens Olfactory receptors interact with odorant molecules in the nose, to initiate a neuronal response that triggers the perception of a smell. The olfactory receptor proteins are members of a large family of G-protein-coupled receptors (GPCR) arising from single coding-exon genes. Olfactory receptors share a 7-transmembrane domain structure with many neurotransmitter and hormone receptors and are responsible for the recognition and G protein-mediated transduction of odorant signals. The olfactory receptor gene family is the largest in the genome. The nomenclature assigned to the olfactory receptor genes and proteins for this organism is independent of other organisms. [provided by RefSeq, Jul 2008],

Function : function:Odorant receptor .,similarity:Belongs to the G-protein coupled receptor 1 family.,

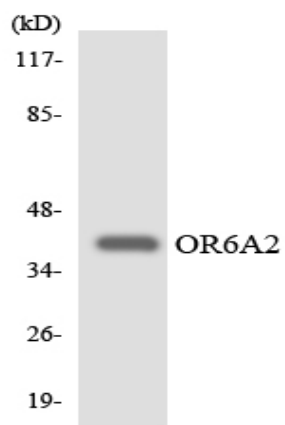
Subcellular Location : Cell membrane; Multi-pass membrane protein.

Expression : Brain,

Products Images



Western blot analysis of lysates from Jurkat cells, using OR6A2 Antibody. The lane on the right is blocked with the synthesized peptide.



Western blot analysis of the lysates from HeLa cells using OR6A2 antibody.