

Olfactory receptor 6C68 Polyclonal Antibody

Catalog No :	YT3426
Reactivity :	Human;Rat;Mouse;
Applications :	WB;ELISA
Target :	Olfactory receptor 6C68
Fields :	>>Olfactory transduction
Gene Name :	OR6C68
Protein Name :	Olfactory receptor 6C68
Human Gene Id :	403284
Human Swiss Prot No :	A6NDL8
Immunogen :	The antiserum was produced against synthesized peptide derived from human OR6C68. AA range:261-310
Specificity :	Olfactory receptor 6C68 Polyclonal Antibody detects endogenous levels of Olfactory receptor 6C68 protein.
Formulation :	Liquid in PBS containing 50% glycerol, 0.5% BSA and 0.02% sodium azide.
Source :	Polyclonal, Rabbit,IgG
Dilution :	WB 1:500 - 1:2000. ELISA: 1:5000. Not yet tested in other applications.
Purification :	The antibody was affinity-purified from rabbit antiserum by affinity-chromatography using epitope-specific immunogen.
Concentration :	1 mg/ml
Storage Stability :	-15°C to -25°C/1 year(Do not lower than -25°C)
Observed Band :	30kD

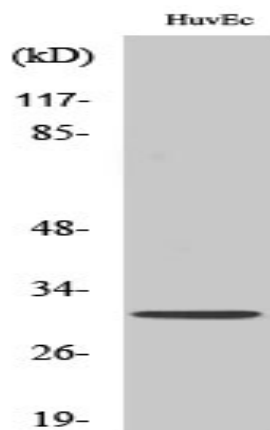
Cell Pathway : Olfactory transduction;

Background : Olfactory receptors interact with odorant molecules in the nose, to initiate a neuronal response that triggers the perception of a smell. The olfactory receptor proteins are members of a large family of G-protein-coupled receptors (GPCR) arising from single coding-exon genes. Olfactory receptors share a seven-transmembrane domain structure with many neurotransmitter and hormone receptors and are responsible for the recognition and G protein-mediated transduction of odorant signals. The olfactory receptor gene family is the largest in the genome. The nomenclature assigned to the olfactory receptor genes and proteins for this organism is independent of other organisms. [provided by RefSeq, Mar 2014],

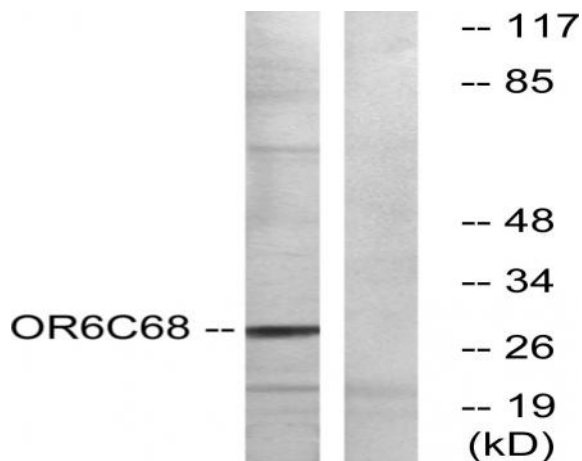
Function : function:Odorant receptor .,similarity:Belongs to the G-protein coupled receptor 1 family.,

Subcellular Location : Cell membrane; Multi-pass membrane protein.

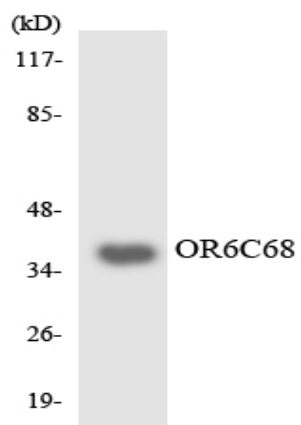
Products Images



Western Blot analysis of various cells using Olfactory receptor 6C68 Polyclonal Antibody



Western blot analysis of lysates from HUVEC cells, using OR6C68 Antibody. The lane on the right is blocked with the synthesized peptide.



Western blot analysis of the lysates from RAW264.7 cells using OR6C68 antibody.