

NY-CO-8 Polyclonal Antibody

Catalog No :	YT3216
Reactivity :	Human;Mouse
Applications :	IHC;IF;ELISA
Target :	NY-CO-8
Gene Name :	SDCCAG8
Protein Name :	Serologically defined colon cancer antigen 8
Human Gene Id :	10806
Human Swiss Prot No :	Q86SQ7
Mouse Gene Id :	76816
Mouse Swiss Prot No :	Q80UF4
Immunogen :	Synthesized peptide derived from NY-CO-8 . at AA range: 520-600
Specificity :	NY-CO-8 Polyclonal Antibody detects endogenous levels of NY-CO-8 protein.
Formulation :	Liquid in PBS containing 50% glycerol, 0.5% BSA and 0.02% sodium azide.
Source :	Polyclonal, Rabbit,IgG
Dilution :	IHC 1:100 - 1:300. ELISA: 1:20000.. IF 1:50-200
Purification :	The antibody was affinity-purified from rabbit antiserum by affinity-chromatography using epitope-specific immunogen.
Concentration :	1 mg/ml
Storage Stability :	-15°C to -25°C/1 year(Do not lower than -25°C)

Molecularweight : 83kD

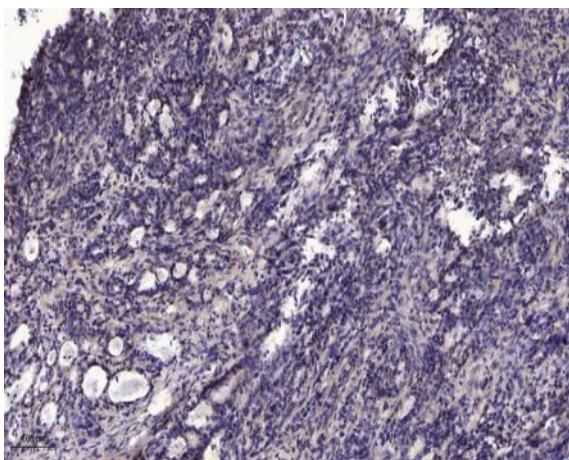
Background : This gene encodes a centrosome associated protein. This protein may be involved in organizing the centrosome during interphase and mitosis. Mutations in this gene are associated with retinal-renal ciliopathy. [provided by RefSeq, Oct 2010],

Function : subunit:Homodimer.,tissue specificity:Expressed in thymus, prostate, testis, ovary, small intestine, colon, mucosa, colon and renal cancer tumors.,

Subcellular Location : Cytoplasm, cytoskeleton, microtubule organizing center, centrosome, centriole. Cytoplasm, cytoskeleton, microtubule organizing center, centrosome . Cytoplasm, cytoskeleton, cilium basal body . Cell junction. Located at the distal ends of both centrioles and colocalizes to centrosomes throughout the cell cycle.; [Isoform 2]: Cytoplasm.

Expression : Expressed in thymus, prostate, testis, ovary, small intestine, colon, mucosa, colon and renal cancer tumors.

Products Images



Immunohistochemical analysis of paraffin-embedded human Gastric adenocarcinoma. 1, Antibody was diluted at 1:200(4° overnight). 2, Tris-EDTA,pH9.0 was used for antigen retrieval. 3,Secondary antibody was diluted at 1:200(room temperature, 45min).