

Olfactory receptor 8G1 Polyclonal Antibody

Catalog No :	YT3442
Reactivity :	Human;Rat;Mouse;
Applications :	WB;IF;ELISA
Target :	Olfactory receptor 8G1
Fields :	>>Olfactory transduction
Gene Name :	OR8G1
Protein Name :	Olfactory receptor 8G1
Human Gene Id :	26494
Human Swiss Prot No :	Q15617
Immunogen :	The antiserum was produced against synthesized peptide derived from human OR8G1. AA range:262-311
Specificity :	Olfactory receptor 8G1 Polyclonal Antibody detects endogenous levels of Olfactory receptor 8G1 protein.
Formulation :	Liquid in PBS containing 50% glycerol, 0.5% BSA and 0.02% sodium azide.
Source :	Polyclonal, Rabbit,IgG
Dilution :	WB 1:500 - 1:2000. IF 1:200 - 1:1000. ELISA: 1:20000. Not yet tested in other applications.
Purification :	The antibody was affinity-purified from rabbit antiserum by affinity-chromatography using epitope-specific immunogen.
Concentration :	1 mg/ml
Storage Stability :	-15°C to -25°C/1 year(Do not lower than -25°C)

Observed Band : 35kD

Background :

Olfactory receptors interact with odorant molecules in the nose, to initiate a neuronal response that triggers the perception of a smell. The olfactory receptor proteins are members of a large family of G-protein-coupled receptors (GPCR) arising from single coding-exon genes. Olfactory receptors share a 7-transmembrane domain structure with many neurotransmitter and hormone receptors and are responsible for the recognition and G protein-mediated transduction of odorant signals. The olfactory receptor gene family is the largest in the genome. The nomenclature assigned to the olfactory receptor genes and proteins for this organism is independent of other organisms. This family member represents a polymorphic pseudogene, whereby some individuals have a functional allele that encodes a full-length protein, while others have a non-functional allele due to t

Function :

function:Odorant receptor .,polymorphism:A stop codon in the gene coding for this protein at position Tyr-259 is responsible for functional diversity thus producing thus a pseudogene.,similarity:Belongs to the G-protein coupled receptor 1 family.,

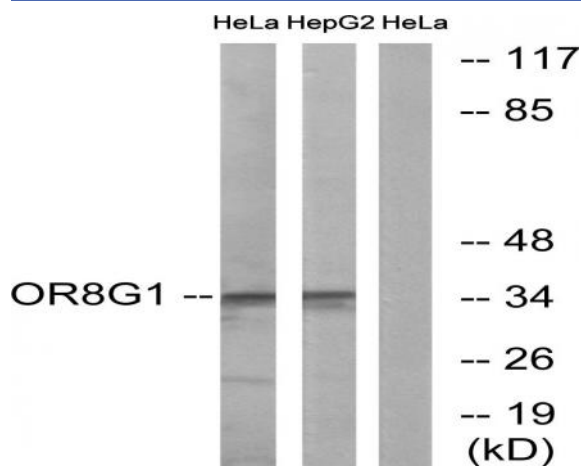
Subcellular Location :

Cell membrane; Multi-pass membrane protein.

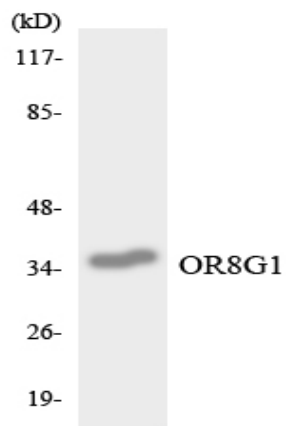
Expression :

Pooled,Testis,

Products Images



Western blot analysis of lysates from HeLa and HepG2 cells, using OR8G1 Antibody. The lane on the right is blocked with the synthesized peptide.



Western blot analysis of the lysates from HT-29 cells using OR8G1 antibody.