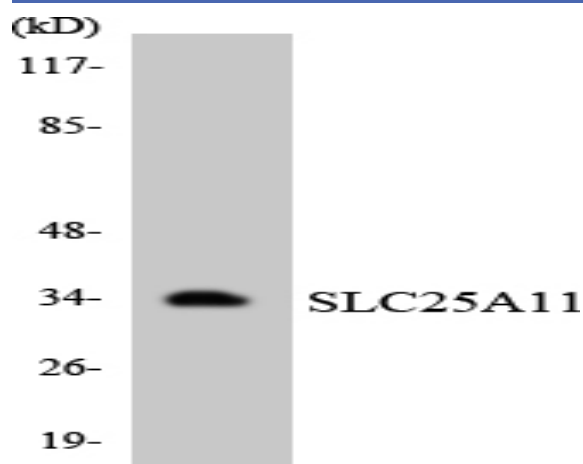


OGCP Polyclonal Antibody

Catalog No :	YT3239
Reactivity :	Human;Mouse;Rat
Applications :	WB;ELISA
Target :	OGCP
Gene Name :	SLC25A11
Protein Name :	Mitochondrial 2-oxoglutarate/malate carrier protein
Human Gene Id :	8402
Human Swiss Prot No :	Q02978
Mouse Gene Id :	67863
Mouse Swiss Prot No :	Q9CR62
Rat Gene Id :	64201
Rat Swiss Prot No :	P97700
Immunogen :	The antiserum was produced against synthesized peptide derived from human SLC25A11. AA range:132-181
Specificity :	OGCP Polyclonal Antibody detects endogenous levels of OGCP protein.
Formulation :	Liquid in PBS containing 50% glycerol, 0.5% BSA and 0.02% sodium azide.
Source :	Polyclonal, Rabbit,IgG
Dilution :	WB 1:500 - 1:2000. ELISA: 1:10000. Not yet tested in other applications.
Purification :	The antibody was affinity-purified from rabbit antiserum by affinity-chromatography using epitope-specific immunogen.

Concentration :	1 mg/ml
Storage Stability :	-15°C to -25°C/1 year(Do not lower than -25°C)
Observed Band :	35kD
Background :	The oxoglutarate/malate carrier transports 2-oxoglutarate across the inner membranes of mitochondria in an electroneutral exchange for malate or other dicarboxylic acids (summary by Iacobazzi et al., 1992 [PubMed 1457818]).[supplied by OMIM, Jan 2011],
Function :	function:Catalyzes the transport of 2-oxoglutarate across the inner mitochondrial membrane in an electroneutral exchange for malate or other dicarboxylic acids, and plays an important role in several metabolic processes, including the malate-aspartate shuttle, the oxoglutarate/isocitrate shuttle, in gluconeogenesis from lactate, and in nitrogen metabolism.,similarity:Belongs to the mitochondrial carrier family.,similarity:Contains 3 Solcar repeats.,
Subcellular Location :	Mitochondrion inner membrane ; Multi-pass membrane protein .
Expression :	B-cell lymphoma,Brain,Muscle,Tongue,Uterus,

Products Images



Western blot analysis of the lysates from HepG2 cells using SLC25A11 antibody.