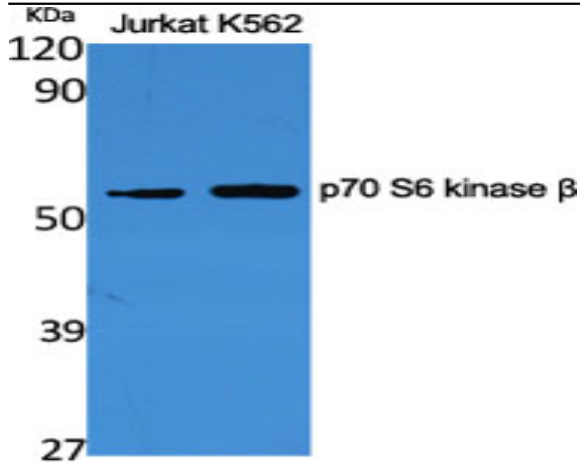


p70 S6 kinase β Polyclonal Antibody

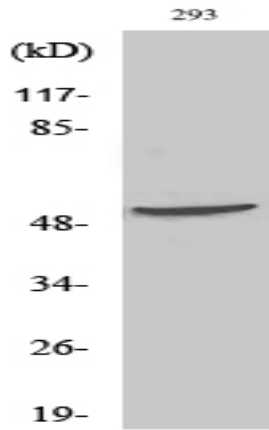
| | |
|------------------------------|--|
| Catalog No : | YT3559 |
| Reactivity : | Human;Mouse |
| Applications : | WB;IHC;IF;ELISA |
| Target : | P70S6k |
| Fields : | >>EGFR tyrosine kinase inhibitor resistance;>>Endocrine resistance;>>ErbB signaling pathway;>>HIF-1 signaling pathway;>>Autophagy - animal;>>mTOR signaling pathway;>>PI3K-Akt signaling pathway;>>AMPK signaling pathway;>>Longevity regulating pathway;>>Longevity regulating pathway - multiple species;>>TGF-beta signaling pathway;>>Apelin signaling pathway;>>Fc gamma R-mediated phagocytosis;>>Thermogenesis;>>Insulin signaling pathway;>>Insulin resistance;>>Shigellosis;>>Human cytomegalovirus infection;>>Human papillomavirus infection;>>Human immunodeficiency virus 1 infection;>>Pathways in cancer;>>Proteoglycans in cancer;>>Chemical carcinogenesis - receptor activation;>>Colorectal cancer;>>Pancreatic cancer;>>Acute myeloid leukemia;>>Breast cancer;>>Hepatocellular carcinoma;>>Gastric cancer;>>Choline metabolism in cancer;>>PD-L1 expression and PD-1 checkpoint pathway in cancer |
| Gene Name : | RPS6KB2 |
| Protein Name : | Ribosomal protein S6 kinase beta-2 |
| Human Gene Id : | 6199 |
| Human Swiss Prot No : | Q9UBS0 |
| Mouse Gene Id : | 58988 |
| Mouse Swiss Prot No : | Q9Z1M4 |
| Immunogen : | The antiserum was produced against synthesized peptide derived from human p70 S6 Kinase beta. AA range:389-438 |
| Specificity : | p70 S6 kinase β Polyclonal Antibody detects endogenous levels of p70 S6 kinase β protein. |

| | |
|-------------------------------|---|
| Formulation : | Liquid in PBS containing 50% glycerol, 0.5% BSA and 0.02% sodium azide. |
| Source : | Polyclonal, Rabbit,IgG |
| Dilution : | WB 1:500 - 1:2000. IHC 1:100 - 1:300. ELISA: 1:5000.. IF 1:50-200 |
| Purification : | The antibody was affinity-purified from rabbit antiserum by affinity-chromatography using epitope-specific immunogen. |
| Concentration : | 1 mg/ml |
| Storage Stability : | -15°C to -25°C/1 year(Do not lower than -25°C) |
| Observed Band : | 42kD |
| Cell Pathway : | Insulin Receptor; Regulates Angiogenesis; mTOR; B Cell Receptor; AMPK |
| Background : | ribosomal protein S6 kinase B2(RPS6KB2) Homo sapiens This gene encodes a member of the RSK (ribosomal S6 kinase) family of serine/threonine kinases. This kinase contains a kinase catalytic domain and phosphorylates the S6 ribosomal protein and eukaryotic translation initiation factor 4B (eIF4B). Phosphorylation of S6 leads to an increase in protein synthesis and cell proliferation. [provided by RefSeq, Jan 2015], |
| Function : | catalytic activity:ATP + a protein = ADP + a phosphoprotein.,function:Phosphorylates specifically ribosomal protein S6.,PTM:Phosphorylated upon DNA damage, probably by ATM or ATR.,similarity:Belongs to the protein kinase superfamily.,similarity:Belongs to the protein kinase superfamily. AGC Ser/Thr protein kinase family. S6 kinase subfamily.,similarity:Contains 1 AGC-kinase C-terminal domain.,similarity:Contains 1 protein kinase domain., |
| Subcellular Location : | Cytoplasm. Nucleus. |
| Expression : | Brain,Epithelium,Lymph, |

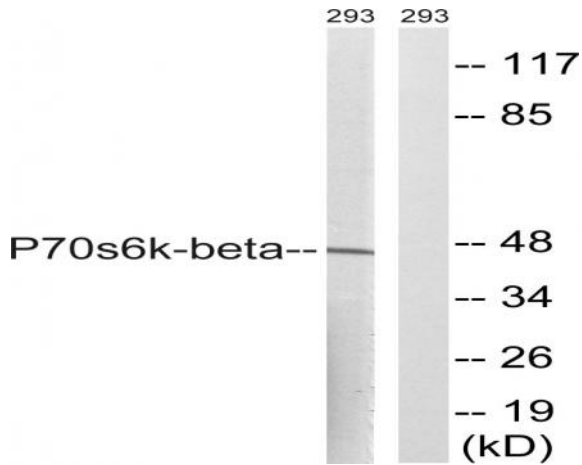
Products Images



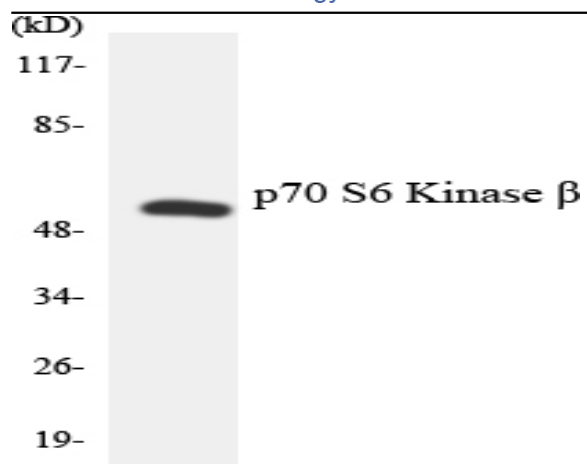
Western Blot analysis of various cells using p70 S6 kinase β Polyclonal Antibody



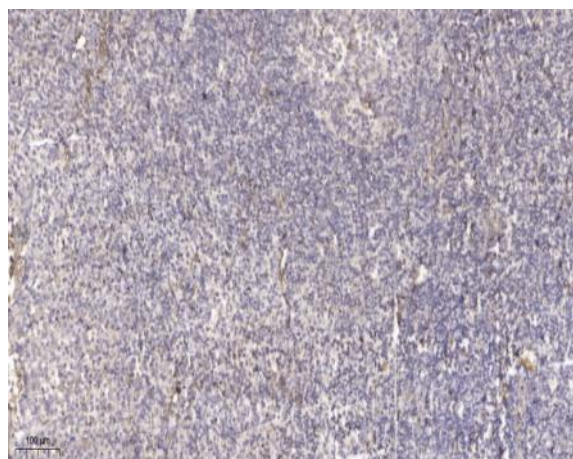
Western Blot analysis of 293 cells using p70 S6 kinase β Polyclonal Antibody



Western blot analysis of lysates from 293 cells, using p70 S6 Kinase beta Antibody. The lane on the right is blocked with the synthesized peptide.



Western blot analysis of the lysates from HUVEC cells using p70 S6 Kinase β antibody.



Immunohistochemical analysis of paraffin-embedded human tonsil. 1, Antibody was diluted at 1:200 (4° overnight). 2, Tris-EDTA, pH 9.0 was used for antigen retrieval. 3, Secondary antibody was diluted at 1:200 (room temperature, 45min).