

## PDE4C Polyclonal Antibody

<b>Catalog No :</b>	YT3629
<b>Reactivity :</b>	Human;Mouse;Rat
<b>Applications :</b>	WB;ELISA;IHC
<b>Target :</b>	PDE4C
<b>Fields :</b>	>>Purine metabolism;>>Metabolic pathways;>>cAMP signaling pathway;>>Parathyroid hormone synthesis, secretion and action;>>Morphine addiction
<b>Gene Name :</b>	PDE4C
<b>Protein Name :</b>	cAMP-specific 3',5'-cyclic phosphodiesterase 4C
<b>Human Gene Id :</b>	5143
<b>Human Swiss Prot No :</b>	Q08493
<b>Mouse Gene Id :</b>	110385
<b>Mouse Swiss Prot No :</b>	Q3UEI1
<b>Rat Swiss Prot No :</b>	P14644
<b>Immunogen :</b>	The antiserum was produced against synthesized peptide derived from human PDE4C. AA range:291-340
<b>Specificity :</b>	PDE4C Polyclonal Antibody detects endogenous levels of PDE4C protein.
<b>Formulation :</b>	Liquid in PBS containing 50% glycerol, 0.5% BSA and 0.02% sodium azide.
<b>Source :</b>	Polyclonal, Rabbit,IgG
<b>Dilution :</b>	WB 1:500-2000;IHC 1:50-300; ELISA 2000-20000
<b>Purification :</b>	The antibody was affinity-purified from rabbit antiserum by affinity-

---

chromatography using epitope-specific immunogen.

---

**Concentration :** 1 mg/ml

---

**Storage Stability :** -15°C to -25°C/1 year(Do not lower than -25°C)

---

**Observed Band :** 80kD

---

**Cell Pathway :** Purine metabolism;

---

**Background :** The protein encoded by this gene belongs to the cyclic nucleotide phosphodiesterase (PDE) family, and PDE4 subfamily. This PDE hydrolyzes the second messenger, cAMP, which is a regulator and mediator of a number of cellular responses to extracellular signals. Thus, by regulating the cellular concentration of cAMP, this protein plays a key role in many important physiological processes. Alternatively spliced transcript variants encoding different isoforms have been described for this gene.[provided by RefSeq, Jul 2011],

---

**Function :** catalytic activity:Adenosine 3',5'-cyclic phosphate + H(2)O = adenosine 5'-phosphate.,enzyme regulation:Inhibited by rolipram.,pathway:Purine metabolism; cAMP degradation; AMP from cAMP: step 1/1.,similarity:Belongs to the cyclic nucleotide phosphodiesterase family.,tissue specificity:Expressed in various tissues but not in cells of the immune system.,

---

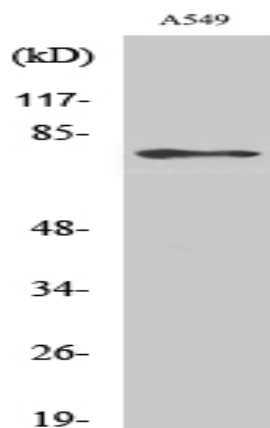
**Subcellular Location :** Cell projection, cilium .

---

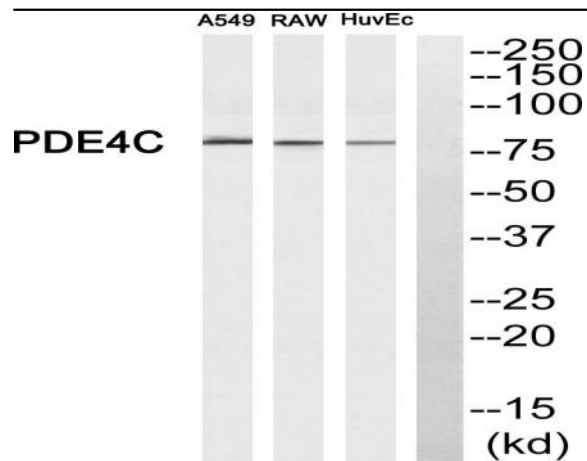
**Expression :** Expressed in various tissues but not in cells of the immune system.

---

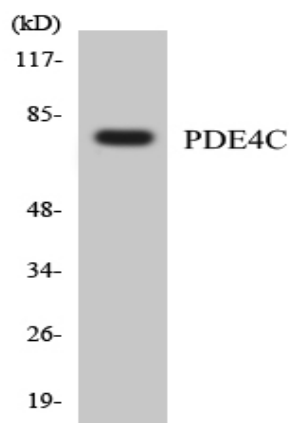
## Products Images



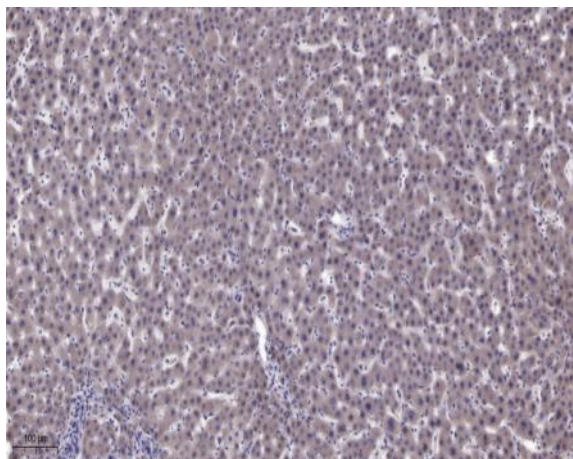
Western Blot analysis of various cells using PDE4C Polyclonal Antibody



Western blot analysis of PDE4C Antibody. The lane on the right is blocked with the PDE4C peptide.



Western blot analysis of the lysates from HeLa cells using PDE4C antibody.



Immunohistochemical analysis of paraffin-embedded human liver cancer. 1, Antibody was diluted at 1:200(4° overnight). 2, Tris-EDTA,pH9.0 was used for antigen retrieval. 3,Secondary antibody was diluted at 1:200(room temperature, 45min).