

PEPT1 Polyclonal Antibody

| | |
|------------------------------|---|
| Catalog No : | YT3662 |
| Reactivity : | Human;Mouse;Rat |
| Applications : | WB;ELISA;IHC |
| Target : | PEPT1 |
| Fields : | >>Protein digestion and absorption |
| Gene Name : | SLC15A1 |
| Protein Name : | Solute carrier family 15 member 1 |
| Human Gene Id : | 6564 |
| Human Swiss Prot No : | P46059 |
| Mouse Gene Id : | 56643 |
| Mouse Swiss Prot No : | Q9JIP7 |
| Rat Gene Id : | 117261 |
| Rat Swiss Prot No : | P51574 |
| Immunogen : | The antiserum was produced against synthesized peptide derived from human SLC15A1. AA range:225-274 |
| Specificity : | PEPT1 Polyclonal Antibody detects endogenous levels of PEPT1 protein. |
| Formulation : | Liquid in PBS containing 50% glycerol, 0.5% BSA and 0.02% sodium azide. |
| Source : | Polyclonal, Rabbit,IgG |
| Dilution : | WB 1:500-2000;IHC 1:50-300; ELISA 2000-20000 |

Purification : The antibody was affinity-purified from rabbit antiserum by affinity-chromatography using epitope-specific immunogen.

Concentration : 1 mg/ml

Storage Stability : -15°C to -25°C/1 year(Do not lower than -25°C)

Observed Band : 73kD

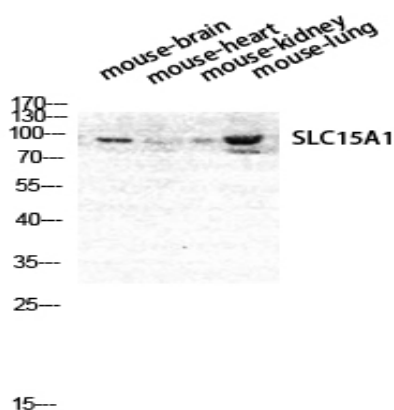
Background : This gene encodes an intestinal hydrogen peptide cotransporter that is a member of the solute carrier family 15. The encoded protein is localized to the brush border membrane of the intestinal epithelium and mediates the uptake of di- and tripeptides from the lumen into the enterocytes. This protein plays an important role in the uptake and digestion of dietary proteins. This protein also facilitates the absorption of numerous peptidomimetic drugs. [provided by RefSeq, Apr 2010],

Function : function:Proton-coupled intake of oligopeptides of 2 to 4 amino acids with a preference for dipeptides. May constitute a major route for the absorption of protein digestion end-products.,similarity:Belongs to the PTR2/POT transporter (TC 2.A.17) family.,

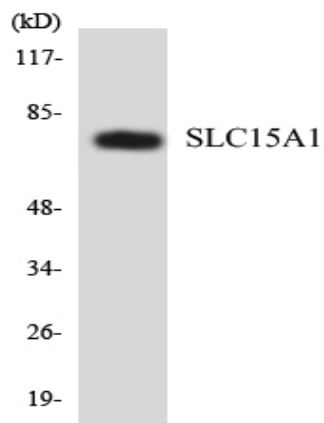
Subcellular Location : Membrane ; Multi-pass membrane protein .

Expression : Intestine,PCR rescued clones,

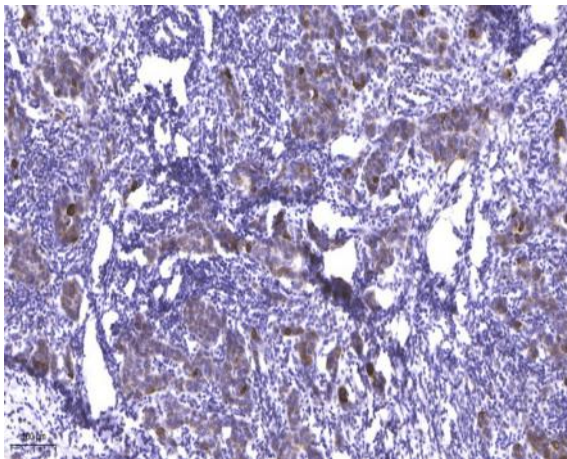
Products Images



Western Blot analysis of MOUSE-BRAIN MOUSE-HEART
MOUSE-LUNG MOUSE-KIDNEY cells using PEPT1 Polyclonal
Antibody diluted at 1:1000



Western blot analysis of the lysates from HeLa cells using SLC15A1 antibody.



Immunohistochemical analysis of paraffin-embedded human Breast cancer. 1, Antibody was diluted at 1:200(4° overnight). 2, Tris-EDTA,pH9.0 was used for antigen retrieval. 3,Secondary antibody was diluted at 1:200(room temperature, 45min).