

## PGE synthase Polyclonal Antibody

<b>Catalog No :</b>	YT3689
<b>Reactivity :</b>	Human;Mouse;Rat
<b>Applications :</b>	WB;ELISA;IHC
<b>Target :</b>	PGE synthase
<b>Fields :</b>	>>Arachidonic acid metabolism;>>Metabolic pathways
<b>Gene Name :</b>	PTGES
<b>Protein Name :</b>	Prostaglandin E synthase
<b>Human Gene Id :</b>	9536
<b>Human Swiss Prot No :</b>	O14684
<b>Mouse Gene Id :</b>	64292
<b>Mouse Swiss Prot No :</b>	Q9JM51
<b>Immunogen :</b>	The antiserum was produced against synthesized peptide derived from human PGE synthase. AA range:30-79
<b>Specificity :</b>	PGE synthase Polyclonal Antibody detects endogenous levels of PGE synthase protein.
<b>Formulation :</b>	Liquid in PBS containing 50% glycerol, 0.5% BSA and 0.02% sodium azide.
<b>Source :</b>	Polyclonal, Rabbit,IgG
<b>Dilution :</b>	WB 1:500-2000;IHC 1:50-300; ELISA 2000-20000
<b>Purification :</b>	The antibody was affinity-purified from rabbit antiserum by affinity-chromatography using epitope-specific immunogen.
<b>Concentration :</b>	1 mg/ml

**Storage Stability :** -15°C to -25°C/1 year(Do not lower than -25°C)

**Observed Band :** 17kD

**Cell Pathway :** Arachidonic acid metabolism;

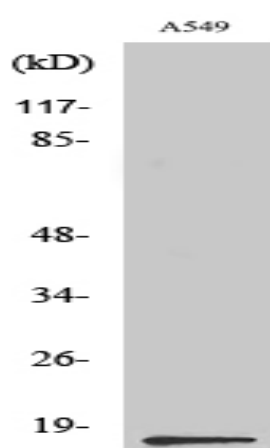
**Background :** prostaglandin E synthase(PTGES) Homo sapiens The protein encoded by this gene is a glutathione-dependent prostaglandin E synthase. The expression of this gene has been shown to be induced by proinflammatory cytokine interleukin 1 beta (IL1B). Its expression can also be induced by tumor suppressor protein TP53, and may be involved in TP53 induced apoptosis. Knockout studies in mice suggest that this gene may contribute to the pathogenesis of collagen-induced arthritis and mediate acute pain during inflammatory responses. [provided by RefSeq, Jul 2008],

**Function :** catalytic activity:(5Z,13E)-(15S)-9-alpha,11-alpha-epidioxy-15-hydroxyprosta-5,13-dienoate = (5Z,13E)-(15S)-11-alpha,15-dihydroxy-9-oxoprosta-5,13-dienoate.,induction:By TP53/p53.,similarity:Belongs to the MAPEG family.,subunit:Homotrimer.,

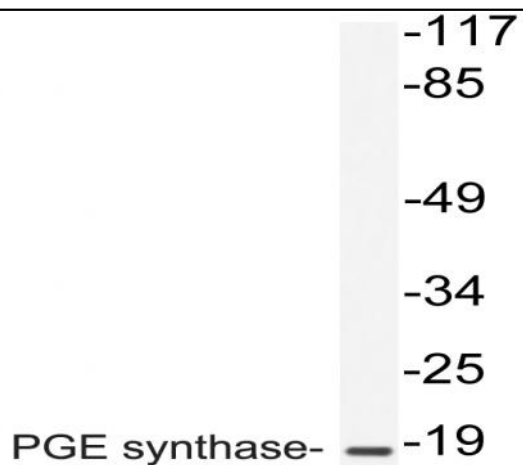
**Subcellular Location :** Membrane ; Multi-pass membrane protein . Cytoplasm, perinuclear region . Colocalizes with PTGS1/COX-1 and PTGS2/COX-2 in the perinuclear compartment. .

**Expression :** Breast,Colon cancer,Pancreas,

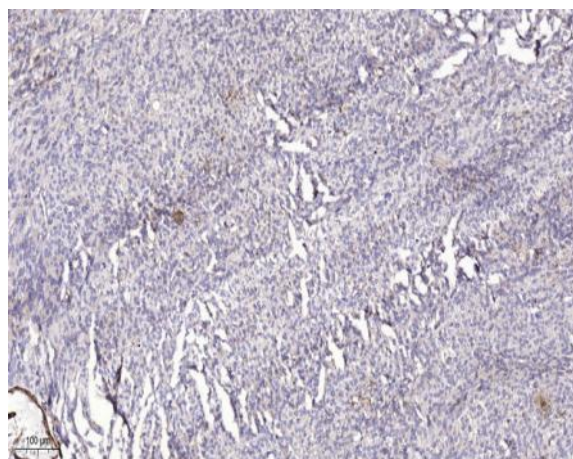
## Products Images



Western Blot analysis of various cells using PGE synthase Polyclonal Antibody diluted at 1:500



Western blot analysis of lysate from A549 cells, using PGE synthase antibody.



Immunohistochemical analysis of paraffin-embedded human Colon cancer. 1, Antibody was diluted at 1:200(4° overnight). 2, Tris-EDTA,pH9.0 was used for antigen retrieval. 3,Secondary antibody was diluted at 1:200(room temperature, 45min).