

**PI 3 kinase p85α/γ Polyclonal Antibody**

<b>Catalog No :</b>	YT3713
<b>Reactivity :</b>	Human;Mouse;Rat;Monkey;Chicken(testedbyyourcustomer?)
<b>Applications :</b>	WB;IHC;IF;ELISA
<b>Target :</b>	PI3 kinase p85α/γ
<b>Fields :</b>	>>EGFR tyrosine kinase inhibitor resistance;>>Endocrine resistance;>>Platinum drug resistance;>>ErbB signaling pathway;>>Ras signaling pathway;>>Rap1 signaling pathway;>>cAMP signaling pathway;>>Chemokine signaling pathway;>>HIF-1 signaling pathway;>>FoxO signaling pathway;>>Phosphatidylinositol signaling system;>>Sphingolipid signaling pathway;>>Phospholipase D signaling pathway;>>Autophagy - animal;>>mTOR signaling pathway;>>PI3K-Akt signaling pathway;>>AMPK signaling pathway;>>Apoptosis;>>Longevity regulating pathway;>>Longevity regulating pathway - multiple species;>>Cellular senescence;>>Axon guidance;>>VEGF signaling pathway;>>Osteoclast differentiation;>>Focal adhesion;>>Signaling pathways regulating pluripotency of stem cells;>>Platelet activation;>>Neutrophil extracellular trap formation;>>Toll-like receptor signaling pathway;>>C-type lectin receptor signaling pathway;>>JAK-STAT signaling pathway;>>Natural killer cell mediated cytotoxicity;>>T cell receptor signaling pathway;>
<b>Gene Name :</b>	PIK3R1/PIK3R3
<b>Protein Name :</b>	Phosphatidylinositol 3-kinase regulatory subunit alpha/gamma
<b>Human Gene Id :</b>	5295/8503
<b>Human Swiss Prot No :</b>	P27986/Q92569
<b>Mouse Gene Id :</b>	18708/18710
<b>Mouse Swiss Prot No :</b>	P26450
<b>Rat Gene Id :</b>	25513/60664
<b>Rat Swiss Prot No :</b>	Q63787/Q63789

<b>Immunogen :</b>	The antiserum was produced against synthesized peptide derived from human PI3-kinase p85-alpha/gamma. AA range:436-485
<b>Specificity :</b>	PI 3-kinase p85 $\alpha$ / $\gamma$ Polyclonal Antibody detects endogenous levels of PI 3-kinase p85 $\alpha$ / $\gamma$ protein.
<b>Formulation :</b>	Liquid in PBS containing 50% glycerol, 0.5% BSA and 0.02% sodium azide.
<b>Source :</b>	Polyclonal, Rabbit,IgG
<b>Dilution :</b>	WB 1:500 - 1:2000. IHC 1:100 - 1:300. IF 1:200 - 1:1000. ELISA: 1:20000. Not yet tested in other applications.
<b>Purification :</b>	The antibody was affinity-purified from rabbit antiserum by affinity-chromatography using epitope-specific immunogen.
<b>Concentration :</b>	1 mg/ml
<b>Storage Stability :</b>	-15°C to -25°C/1 year(Do not lower than -25°C)
<b>Observed Band :</b>	54kD,83kD
<b>Cell Pathway :</b>	Regulates Angiogenesis; Regulation_Microtubule; Regulation of Actin Dynamics; SAPK_JNK; Stem cell pathway; Insulin Receptor; ErbB/HER; AMPK; mTOR; B Cell Receptor; Adherens_Junction
<b>Background :</b>	Phosphatidylinositol 3-kinase phosphorylates the inositol ring of phosphatidylinositol at the 3-prime position. The enzyme comprises a 110 kD catalytic subunit and a regulatory subunit of either 85, 55, or 50 kD. This gene encodes the 85 kD regulatory subunit. Phosphatidylinositol 3-kinase plays an important role in the metabolic actions of insulin, and a mutation in this gene has been associated with insulin resistance. Alternative splicing of this gene results in four transcript variants encoding different isoforms. [provided by RefSeq, Jun 2011],
<b>Function :</b>	disease:Defects in PIK3R1 are a cause of severe insulin resistance.,domain:The SH3 domain mediates the binding to CBLB, and to HIV-1 Nef.,function:Binds to activated (phosphorylated) protein-Tyr kinases, through its SH2 domain, and acts as an adapter, mediating the association of the p110 catalytic unit to the plasma membrane. Necessary for the insulin-stimulated increase in glucose uptake and glycogen synthesis in insulin-sensitive tissues.,PTM:Polyubiquitinated in T-cells by CBLB; which does not promote proteasomal degradation but impairs association with CD28 and CD3Z upon T-cell activation.,similarity:Belongs to the PI3K p85 subunit family.,similarity:Contains 1 Rho-GAP domain.,similarity:Contains 1 SH3 domain.,similarity:Contains 2 SH2 domains.,subunit:Heterodimer of a p110 (catalytic) and a p85 (regulatory)

subunits. Interacts with phosphorylated TOM1L1. Interacts with phosphorylat

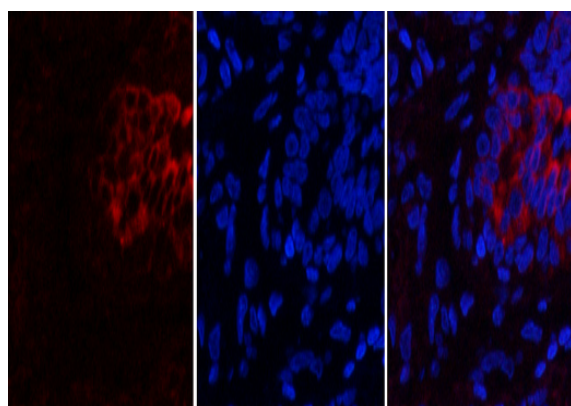
**Subcellular Location :**

nucleus,cytoplasm,cis-Golgi network,cytosol,plasma membrane,cell-cell junction,phosphatidylinositol 3-kinase complex,phosphatidylinositol 3-kinase complex, class IA,membrane,perinuclear endoplasmic reticulum membrane,

**Expression :**

Isoform 2 is expressed in skeletal muscle and brain, and at lower levels in kidney and cardiac muscle. Isoform 2 and isoform 4 are present in skeletal muscle (at protein level).

## Products Images

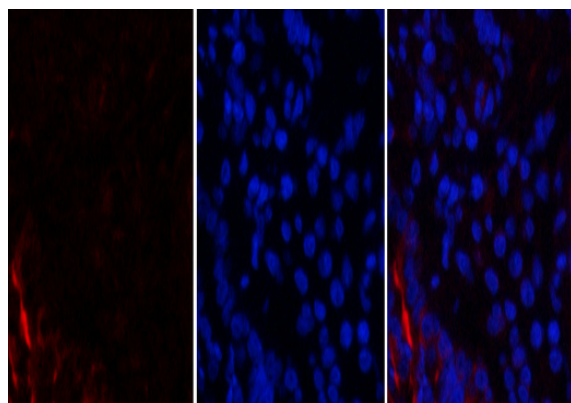


A

B

C

Immunofluorescence analysis of human-lung tissue. 1,PI 3-kinase p85 $\alpha$ / $\gamma$  Polyclonal Antibody(red) was diluted at 1:200(4°C,overnight). 2, Cy3 labeled Secondary antibody was diluted at 1:300(room temperature, 50min).3, Picture B: DAPI(blue) 10min. Picture A:Target. Picture B: DAPI. Picture C: merge of A+B

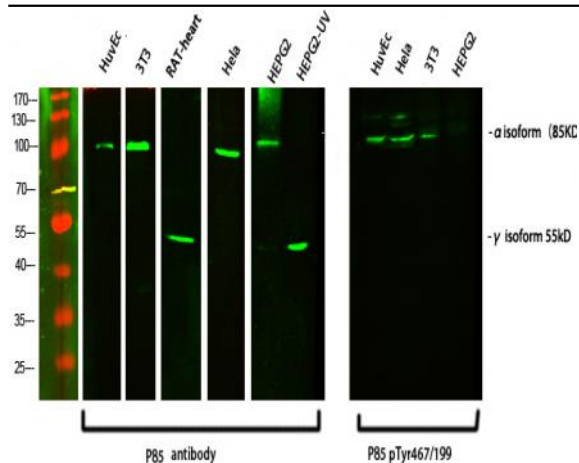


A

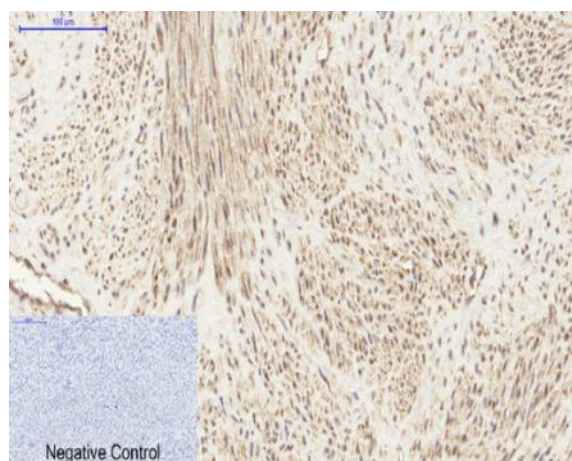
B

C

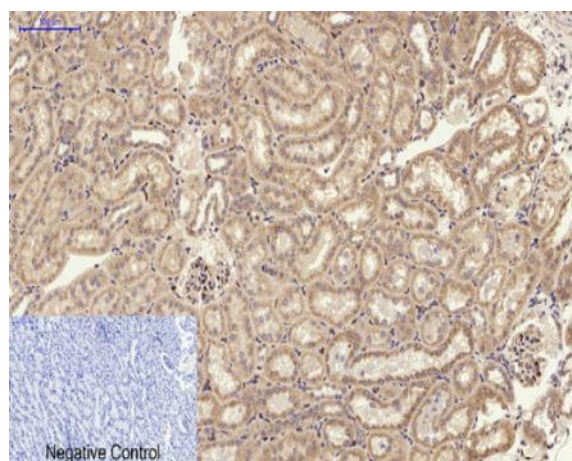
Immunofluorescence analysis of rat-lung tissue. 1,PI 3-kinase p85 $\alpha$ / $\gamma$  Polyclonal Antibody(red) was diluted at 1:200(4°C,overnight). 2, Cy3 labeled Secondary antibody was diluted at 1:300(room temperature, 50min).3, Picture B: DAPI(blue) 10min. Picture A:Target. Picture B: DAPI. Picture C: merge of A+B



Western Blot analysis of various cells using primary antibody diluted at 1:1000(4°C overnight). Secondary antibody:Goat Anti-rabbit IgG IRDye 800( diluted at 1:5000, 25°C, 1 hour)

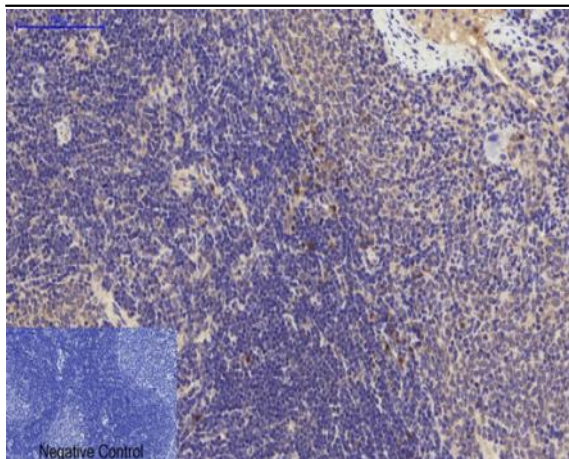


Immunohistochemical analysis of paraffin-embedded Human-uterus tissue. 1,PI 3-kinase p85α/γ Polyclonal Antibody was diluted at 1:200(4°C,overnight). 2, Sodium citrate pH 6.0 was used for antibody retrieval(>98°C,20min). 3,Secondary antibody was diluted at 1:200(room temperature, 30min). Negative control was used by secondary antibody only.

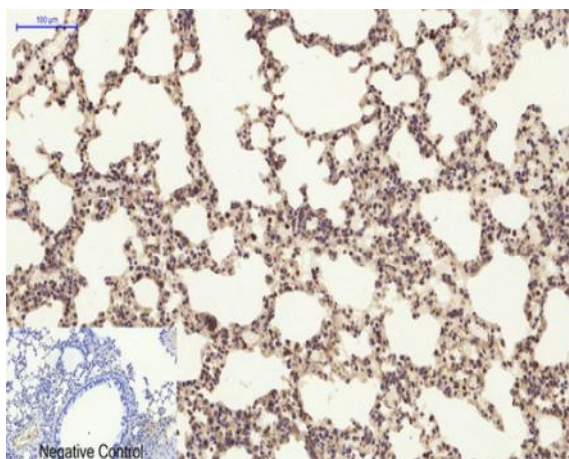


Immunohistochemical analysis of paraffin-embedded Rat-kidney tissue. 1,PI 3-kinase p85α/γ Polyclonal Antibody was diluted at 1:200(4°C,overnight). 2, Sodium citrate pH 6.0 was used for antibody retrieval(>98°C,20min). 3,Secondary antibody was diluted at 1:200(room temperature, 30min). Negative control was used by secondary antibody only.

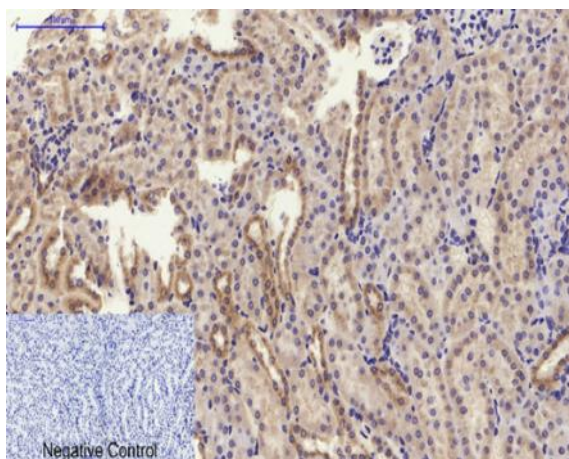




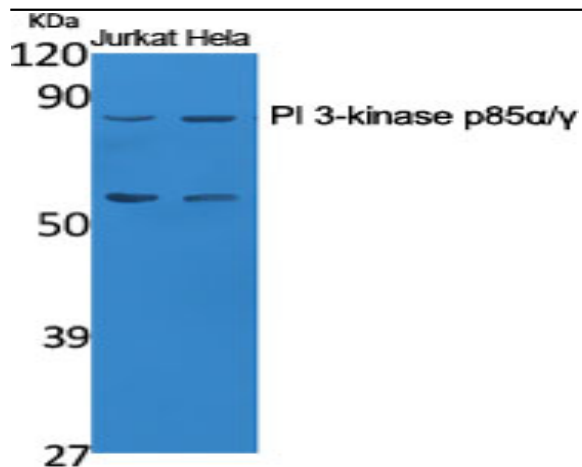
Immunohistochemical analysis of paraffin-embedded Rat-spleen tissue. 1, PI 3-kinase p85 $\alpha$ / $\gamma$  Polyclonal Antibody was diluted at 1:200(4°C, overnight). 2, Sodium citrate pH 6.0 was used for antibody retrieval(>98°C, 20min). 3, Secondary antibody was diluted at 1:200(room temperature, 30min). Negative control was used by secondary antibody only.



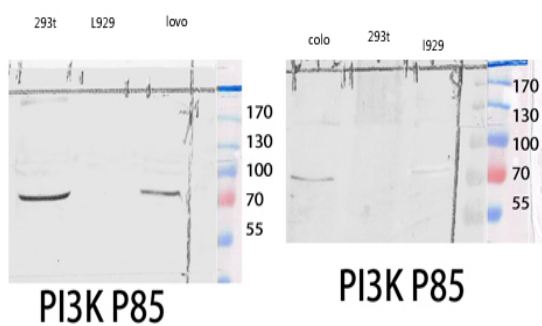
Immunohistochemical analysis of paraffin-embedded Mouse-lung tissue. 1, PI 3-kinase p85 $\alpha$ / $\gamma$  Polyclonal Antibody was diluted at 1:200(4°C, overnight). 2, Sodium citrate pH 6.0 was used for antibody retrieval(>98°C, 20min). 3, Secondary antibody was diluted at 1:200(room temperature, 30min). Negative control was used by secondary antibody only.



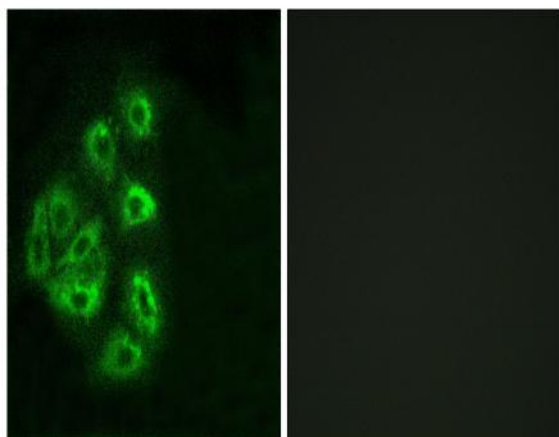
Immunohistochemical analysis of paraffin-embedded Mouse-kidney tissue. 1, PI 3-kinase p85 $\alpha$ / $\gamma$  Polyclonal Antibody was diluted at 1:200(4°C, overnight). 2, Sodium citrate pH 6.0 was used for antibody retrieval(>98°C, 20min). 3, Secondary antibody was diluted at 1:200(room temperature, 30min). Negative control was used by secondary antibody only.



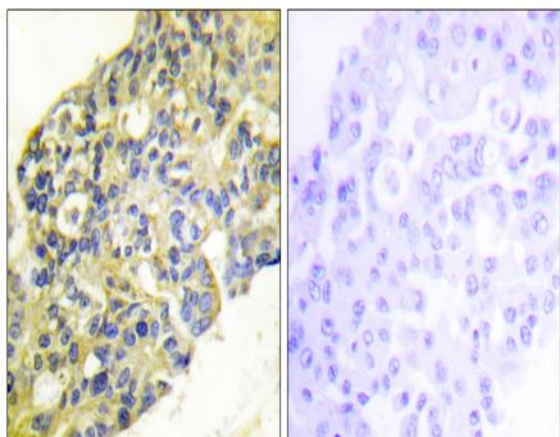
Western Blot analysis of various cells using PI 3-kinase p85 $\alpha$ / $\gamma$  Polyclonal Antibody diluted at 1:1000



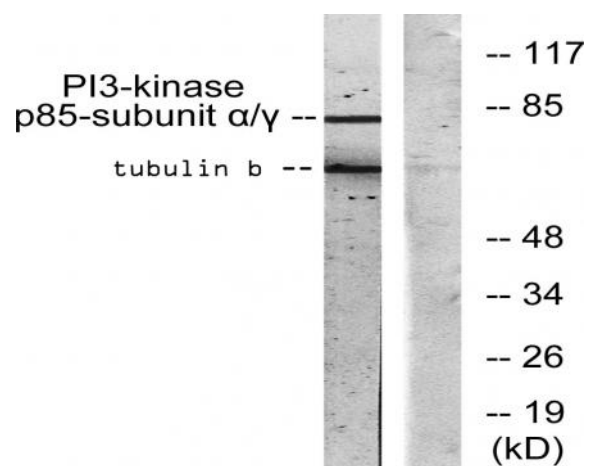
Western blot analysis of 293T COLO lysis using PI 3-kinase p85 $\alpha$ / $\gamma$  antibody.



Immunofluorescence analysis of HeLa cells, using PI3-kinase p85- $\alpha$ / $\gamma$  Antibody. The picture on the right is blocked with the synthesized peptide.



Immunohistochemistry analysis of paraffin-embedded human breast carcinoma tissue, using PI3-kinase p85-alpha/gamma Antibody. The picture on the right is blocked with the synthesized peptide.



Western blot analysis of lysates from COS7 cells, treated with H<sub>2</sub>O<sub>2</sub> 100uM 30', using PI3-kinase p85-alpha/gamma Antibody. The lane on the right is blocked with the synthesized peptide.