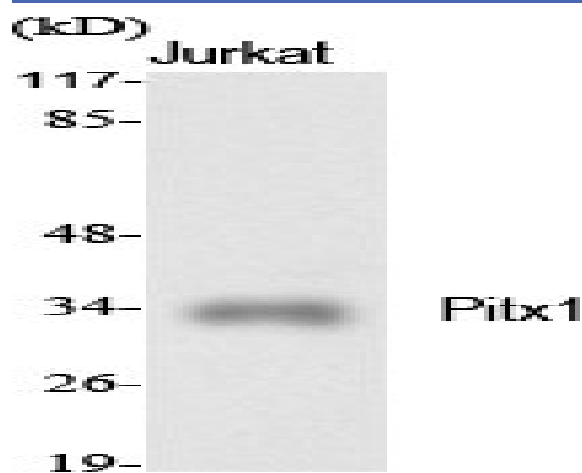


Pitx1 Polyclonal Antibody

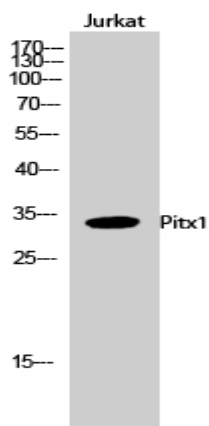
| | |
|------------------------------|---|
| Catalog No : | YT3740 |
| Reactivity : | Human;Mouse;Rat |
| Applications : | WB;IHC;IF;ELISA |
| Target : | Pitx1 |
| Gene Name : | PITX1 |
| Protein Name : | Pituitary homeobox 1 |
| Human Gene Id : | 5307 |
| Human Swiss Prot No : | P78337 |
| Mouse Gene Id : | 18740 |
| Mouse Swiss Prot No : | P70314 |
| Rat Gene Id : | 113983 |
| Rat Swiss Prot No : | Q99NA7 |
| Immunogen : | The antiserum was produced against synthesized peptide derived from human PITX1. AA range:121-170 |
| Specificity : | Pitx1 Polyclonal Antibody detects endogenous levels of Pitx1 protein. |
| Formulation : | Liquid in PBS containing 50% glycerol, 0.5% BSA and 0.02% sodium azide. |
| Source : | Polyclonal, Rabbit,IgG |
| Dilution : | WB 1:500 - 1:2000. IHC 1:100 - 1:300. ELISA: 1:20000.. IF 1:50-200 |
| Purification : | The antibody was affinity-purified from rabbit antiserum by affinity-chromatography using epitope-specific immunogen. |

| | |
|-------------------------------|---|
| Concentration : | 1 mg/ml |
| Storage Stability : | -15°C to -25°C/1 year(Do not lower than -25°C) |
| Observed Band : | 34kD |
| Background : | This gene encodes a member of the RIEG/PITX homeobox family, which is in the bicoid class of homeodomain proteins. Members of this family are involved in organ development and left-right asymmetry. This protein acts as a transcriptional regulator involved in basal and hormone-regulated activity of prolactin. [provided by RefSeq, Jul 2008], |
| Function : | function:May play a role in the development of anterior structures, and in particular, the brain and facies and in specifying the identity or structure of hindlimb.,similarity:Belongs to the paired homeobox family. Bicoid subfamily.,similarity:Contains 1 homeobox DNA-binding domain.,similarity:Contains 1 OAR domain., |
| Subcellular Location : | Nucleus. |
| Expression : | Embryo,Epithelium,Pancreas,Placenta, |

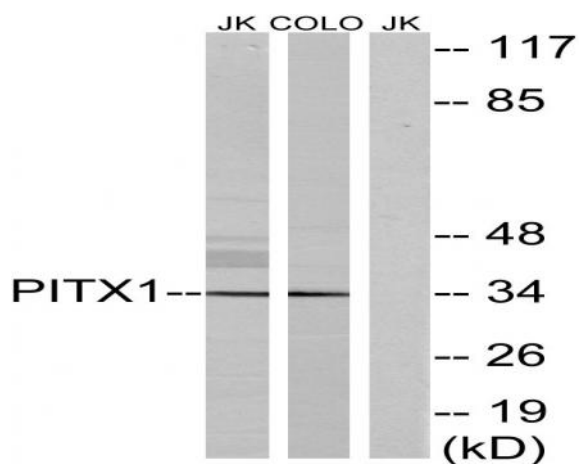
Products Images



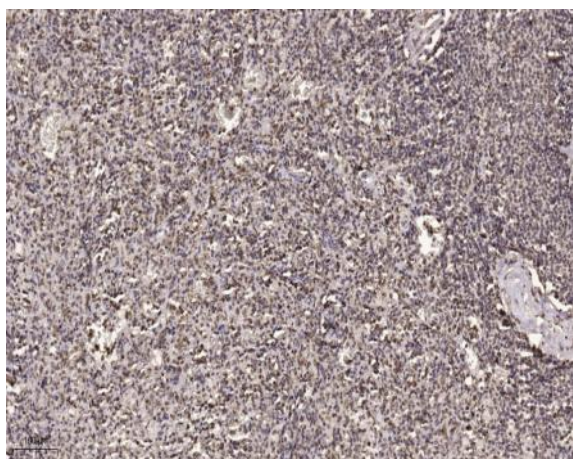
Western Blot analysis of various cells using Pitx1 Polyclonal Antibody cells nucleus extracted by Minute TM Cytoplasmic and Nuclear Fractionation kit (SC-003, Inventibiotech, MN, USA).



Western Blot analysis of Jurkat cells using Pitx1 Polyclonal Antibody cells nucleus extracted by Minute™ Cytoplasmic and Nuclear Fractionation kit (SC-003, Inventibiotec, MN, USA).



Western blot analysis of lysates from Jurkat and COLO cells, using PITX1 Antibody. The lane on the right is blocked with the synthesized peptide.



Immunohistochemical analysis of paraffin-embedded human spleen. 1, Tris-EDTA, pH9.0 was used for antigen retrieval. 2 Antibody was diluted at 1:200 (4° overnight). 3, Secondary antibody was diluted at 1:200 (room temperature, 45min).