

OMG Polyclonal Antibody

Catalog No :	YT3460
Reactivity :	Human;Mouse
Applications :	WB;IHC;IF;ELISA
Target :	OMG
Gene Name :	OMG
Protein Name :	Oligodendrocyte-myelin glycoprotein
Human Gene Id :	4974
Human Swiss Prot No :	P23515
Mouse Swiss Prot No :	Q63912
Immunogen :	The antiserum was produced against synthesized peptide derived from human OMG. AA range:282-331
Specificity :	OMG Polyclonal Antibody detects endogenous levels of OMG protein.
Formulation :	Liquid in PBS containing 50% glycerol, 0.5% BSA and 0.02% sodium azide.
Source :	Polyclonal, Rabbit,IgG
Dilution :	WB 1:500 - 1:2000. IHC 1:100 - 1:300. ELISA: 1:10000.. IF 1:50-200
Purification :	The antibody was affinity-purified from rabbit antiserum by affinity-chromatography using epitope-specific immunogen.
Concentration :	1 mg/ml
Storage Stability :	-15°C to -25°C/1 year(Do not lower than -25°C)
Observed Band :	48kD

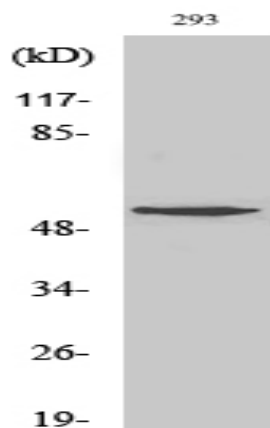
Background : caution:Do not confuse oligodendrocyte-myelin glycoprotein (OMG) with myelin-oligodendrocyte glycoprotein (MOG).,function:Cell adhesion molecule contributing to the interactive process required for myelination in the central nervous system.,PTM:O-glycosylated in its Ser/Thr-rich repeat domain .,similarity:Contains 8 LRR (leucine-rich) repeats.,subunit:Binds to RTN4R.,tissue specificity:Oligodendrocytes and myelin of the central nervous system.,

Function : caution:Do not confuse oligodendrocyte-myelin glycoprotein (OMG) with myelin-oligodendrocyte glycoprotein (MOG).,function:Cell adhesion molecule contributing to the interactive process required for myelination in the central nervous system.,PTM:O-glycosylated in its Ser/Thr-rich repeat domain .,similarity:Contains 8 LRR (leucine-rich) repeats.,subunit:Binds to RTN4R.,tissue specificity:Oligodendrocytes and myelin of the central nervous system.,

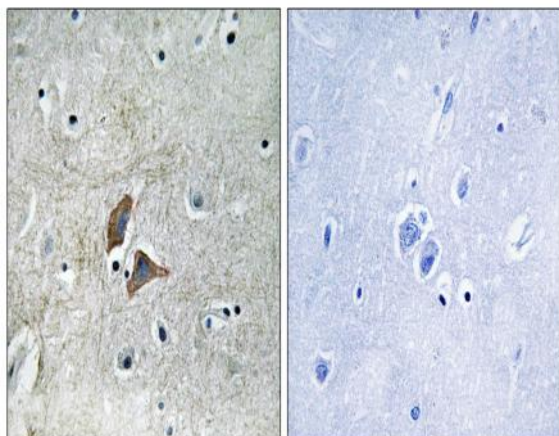
Subcellular Location : Cell membrane; Lipid-anchor, GPI-anchor.

Expression : Oligodendrocytes and myelin of the central nervous system.

Products Images



Western Blot analysis of various cells using OMG Polyclonal Antibody



Immunohistochemistry analysis of paraffin-embedded human brain, using OMG Antibody. The picture on the right is blocked with the synthesized peptide.