

Pinin Polyclonal Antibody

Catalog No :	YT3731
Reactivity :	Human;Mouse
Applications :	WB;IHC
Target :	Pinin
Fields :	>>Nucleocytoplasmic transport;>>mRNA surveillance pathway
Gene Name :	PNN
Protein Name :	Pinin
Human Gene Id :	5411
Human Swiss Prot No :	Q9H307
Mouse Gene Id :	18949
Mouse Swiss Prot No :	O35691
Immunogen :	The antiserum was produced against synthesized peptide derived from human PNN. AA range:211-260
Specificity :	Pinin Polyclonal Antibody detects endogenous levels of Pinin protein.
Formulation :	Liquid in PBS containing 50% glycerol, 0.5% BSA and 0.02% sodium azide.
Source :	Polyclonal, Rabbit,IgG
Dilution :	WB 1:500-2000;IHC 1:50-300
Purification :	The antibody was affinity-purified from rabbit antiserum by affinity-chromatography using epitope-specific immunogen.
Concentration :	1 mg/ml

Storage Stability : -15 °C to -25 °C/1 year(Do not lower than -25 °C)

Observed Band : 85kD

Background : function:Transcriptional activator binding to the E-box 1 core sequence of the E-cadherin promoter gene; the core-binding sequence is 5'CAGGTG-3'. Capable of reversing CTBP1-mediated transcription repression. Also participates in the regulation of alternative pre-mRNA splicing. Associates to spliced mRNA within 60 nt upstream of the 5'-splice sites. Involved in the establishment and maintenance of epithelia cell-cell adhesion. Potential tumor suppressor for renal cell carcinoma.,PTM:Phosphorylated upon DNA damage, probably by ATM or ATR.,similarity:Belongs to the pinin family.,subcellular location:Cell-cell contact area, predominantly desmosome of intercellular adherens junction. Not a nucleocytoplasmic shuttling protein.,subunit:Found in a complex with SR proteins. Found in a mRNP complex with RNPS1. Interacts with C6orf111/SRRP130, CTBP1, CTBP2, KRT8, KRT18, KRT19, PS1D/PNO40, PPIG, RNPS1, SFRS4 and SRRM2. Identified in the spliceosome C complex, at least composed of AQR, ASCC3L1, C19orf29, CDC40, CDC5L, CRNKL1, DDX23, DDX41, DDX48, DDX5, DGCR14, DHX35, DHX38, DHX8, EFTUD2, FRG1, GPATC1, HNRPA1, HNRPA2B1, HNRPA3, HNRPC, HNRPF, HNRPH1, HNRPK, HNRPM, HNRPR, HNRPU, KIAA1160, KIAA1604, LSM2, LSM3, MAGOH, MORG1, PABPC1, PLRG1, PNN, PPIE, PPIL1, PPIL3, PPWD1, PRPF19, PRPF4B, PRPF6, PRPF8, RALY, RBM22, RBM8A, RBMX, SART1, SF3A1, SF3A2, SF3A3, SF3B1, SF3B2, SF3B3, SFRS1, SKIV2L2, SNRPA1, SNRPB, SNRPB2, SNRPD1, SNRPD2, SNRPD3, SNRPE, SNRPF, SNRPG, SNW1, SRRM1, SRRM2, SYF2, SYNCRIP, TFIP11, THOC4, U2AF1, WDR57, XAB2 and ZCCHC8.,tissue specificity:Expressed in placenta, lung, liver, kidney, pancreas, spleen, thymus, prostate, testis, ovary, small intestine, colon, heart, epidermis, esophagus, brain and smooth and skeletal muscle. Expressed strongly in melanoma metastasis lesions and advanced primary tumors.,

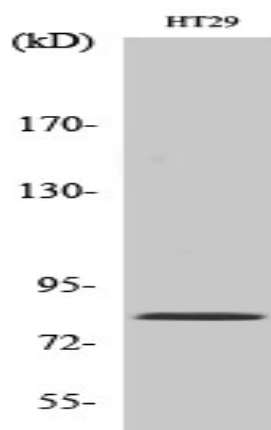
Function : function:Transcriptional activator binding to the E-box 1 core sequence of the E-cadherin promoter gene; the core-binding sequence is 5'CAGGTG-3'. Capable of reversing CTBP1-mediated transcription repression. Also participates in the regulation of alternative pre-mRNA splicing. Associates to spliced mRNA within 60 nt upstream of the 5'-splice sites. Involved in the establishment and maintenance of epithelia cell-cell adhesion. Potential tumor suppressor for renal cell carcinoma.,PTM:Phosphorylated upon DNA damage, probably by ATM or ATR.,similarity:Belongs to the pinin family.,subcellular location:Cell-cell contact area, predominantly desmosome of intercellular adherens junction. Not a nucleocytoplasmic shuttling protein.,subunit:Found in a complex with SR proteins. Found in a mRNP complex with RNPS1. Interacts with C6orf111/SRRP130, CTBP1, CTBP2, KRT8, KRT18, KRT19, PS1D/PNO40, PPIG, RN

Subcellular Location : Nucleus speckle. Cell junction, desmosome. Cell-cell contact area, predominantly desmosome of intercellular adherens junction. Not a nucleocytoplasmic shuttling protein.

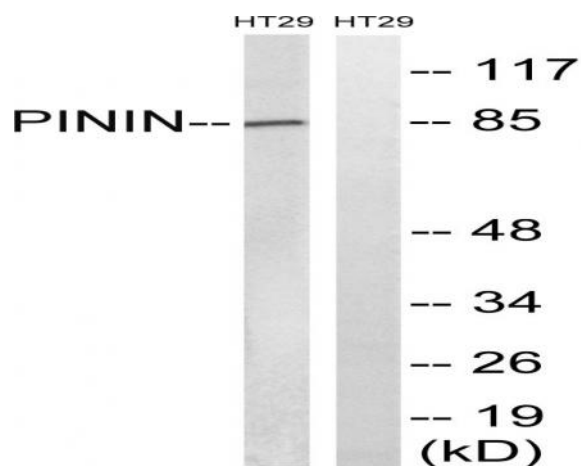
Expressed in placenta, lung, liver, kidney, pancreas, spleen, thymus, prostate,

Expression : testis, ovary, small intestine, colon, heart, epidermis, esophagus, brain and smooth and skeletal muscle. Expressed strongly in melanoma metastasis lesions and advanced primary tumors.

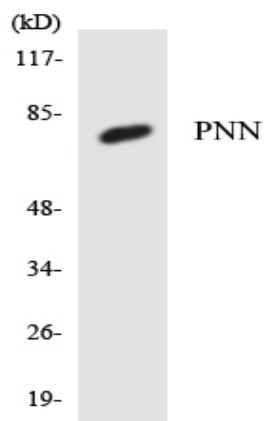
Products Images



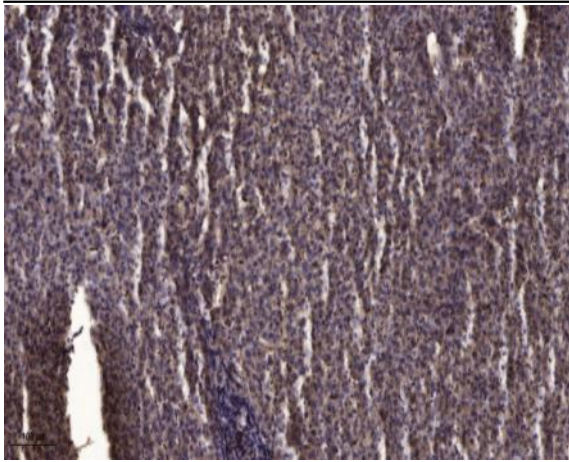
Western Blot analysis of various cells using Pinin Polyclonal Antibody



Western blot analysis of lysates from HT-29 cells, using PNN Antibody. The lane on the right is blocked with the synthesized peptide.



Western blot analysis of the lysates from K562 cells using PNN antibody.



Immunohistochemical analysis of paraffin-embedded human liver cancer. 1, Antibody was diluted at 1:200(4° overnight). 2, Tris-EDTA,pH9.0 was used for antigen retrieval. 3,Secondary antibody was diluted at 1:200(room temperature, 45min).