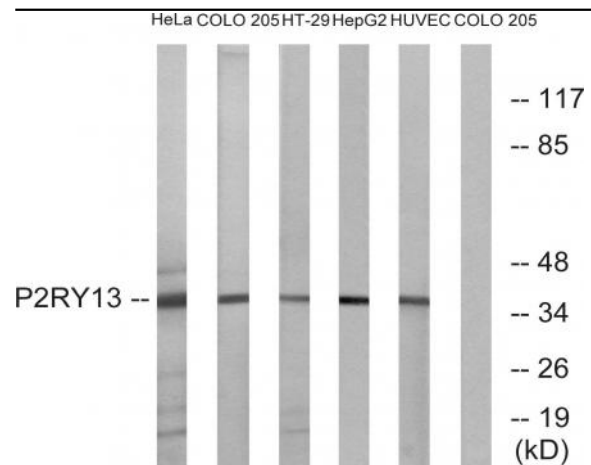


P2RY13 Polyclonal Antibody

Catalog No :	YT3503
Reactivity :	Human;Rat
Applications :	IHC;IF;WB;ELISA
Target :	P2RY13
Fields :	>>Neuroactive ligand-receptor interaction
Gene Name :	P2RY13
Protein Name :	P2Y purinoceptor 13
Human Gene Id :	53829
Human Swiss Prot No :	Q9BPV8
Mouse Swiss Prot No :	Q9D8I2
Rat Gene Id :	310444
Rat Swiss Prot No :	Q6GUG4
Immunogen :	The antiserum was produced against synthesized peptide derived from human P2RY13. AA range:209-258
Specificity :	P2RY13 Polyclonal Antibody detects endogenous levels of P2RY13 protein.
Formulation :	Liquid in PBS containing 50% glycerol, 0.5% BSA and 0.02% sodium azide.
Source :	Polyclonal, Rabbit,IgG
Dilution :	WB 1:500 - 1:2000. IHC 1:100 - 1:300. IF 1:200 - 1:1000. ELISA: 1:20000. Not yet tested in other applications.
Purification :	The antibody was affinity-purified from rabbit antiserum by affinity-chromatography using epitope-specific immunogen.

Concentration :	1 mg/ml
Storage Stability :	-15°C to -25°C/1 year(Do not lower than -25°C)
Observed Band :	38kD
Cell Pathway :	Neuroactive ligand-receptor interaction;
Background :	The product of this gene belongs to the family of G-protein coupled receptors. This family has several receptor subtypes with different pharmacological selectivity, which overlaps in some cases, for various adenosine and uridine nucleotides. This receptor is activated by ADP. [provided by RefSeq, Sep 2008],
Function :	function:Receptor for ADP. Coupled to G(i)-proteins. May play a role in hematopoiesis and the immune system.,miscellaneous:Stimulation by ADP in stably transfected CHO cells resulted in inhibition of adenylyl cyclase and the phosphorylation of the MAP kinases MAPK3 and MAPK1 in a pertussis toxin-sensitive way. Inhibition of adenylyl cyclase and phosphorylation of the MAP kinases are transduction mechanisms that involve G(i) proteins.,sequence caution:Contaminating sequence. Potential poly-A sequence.,similarity:Belongs to the G-protein coupled receptor 1 family.,tissue specificity:Strong expression in spleen and adult brain. Lower expression in placenta, lung, liver, spinal cord, thymus, small intestine, uterus, stomach, testis, fetal brain, and adrenal gland. Not detected in pancreas, heart, kidney, skeletal muscle, ovary or fetal aorta. Clearly detected in lymph node and bone marrow, w
Subcellular Location :	Cell membrane; Multi-pass membrane protein.
Expression :	Strong expression in spleen and adult brain. Lower expression in placenta, lung, liver, spinal cord, thymus, small intestine, uterus, stomach, testis, fetal brain, and adrenal gland. Not detected in pancreas, heart, kidney, skeletal muscle, ovary or fetal aorta. Clearly detected in lymph node and bone marrow, weakly detected in peripheral blood mononuclear cells (PBMC) and in peripheral blood leukocytes (PBL), but not detected in polymorphonuclear cells (PMN). In the brain, detected in all brain regions examined.

Products Images



Western blot analysis of lysates from HeLa, COLO, HT-29, HepG2, and HUVEC cells, using P2RY13 Antibody. The lane on the right is blocked with the synthesized peptide.