

**p53RFP Polyclonal Antibody**

<b>Catalog No :</b>	YT3544
<b>Reactivity :</b>	Human;Mouse
<b>Applications :</b>	WB;ELISA
<b>Target :</b>	p53RFP
<b>Gene Name :</b>	RNF144B
<b>Protein Name :</b>	E3 ubiquitin-protein ligase RNF144B
<b>Human Gene Id :</b>	255488
<b>Human Swiss Prot No :</b>	Q7Z419
<b>Mouse Gene Id :</b>	218215
<b>Mouse Swiss Prot No :</b>	Q8BKD6
<b>Immunogen :</b>	Synthesized peptide derived from the Internal region of human p53RFP.
<b>Specificity :</b>	p53RFP Polyclonal Antibody detects endogenous levels of p53RFP protein.
<b>Formulation :</b>	Liquid in PBS containing 50% glycerol, 0.5% BSA and 0.02% sodium azide.
<b>Source :</b>	Polyclonal, Rabbit,IgG
<b>Dilution :</b>	WB 1:500 - 1:2000. ELISA: 1:40000. Not yet tested in other applications.
<b>Purification :</b>	The antibody was affinity-purified from rabbit antiserum by affinity-chromatography using epitope-specific immunogen.
<b>Concentration :</b>	1 mg/ml
<b>Storage Stability :</b>	-15°C to -25°C/1 year(Do not lower than -25°C)

**Observed Band :** 35kD

---

**Background :**

caution:Lacks the His residue in the RING-type domain 2 that is one of the conserved features of the family.,domain:The RING-type zinc finger domain mediates binding to an E2 ubiquitin-conjugating enzyme.,function:E3 ubiquitin-protein ligase which accepts ubiquitin from E2 ubiquitin-conjugating enzymes UBE2L3 and UBE2L6 in the form of a thioester and then directly transfers the ubiquitin to targeted substrates such as LCMT2, thereby promoting their degradation. Induces apoptosis via a TP53/p53-dependent but caspase-independent mechanism.,pathway:Protein modification; protein ubiquitination.,PTM:Auto-ubiquitinated.,similarity:Belongs to the RBR family. RNF144 subfamily.,similarity:Contains 1 IBR-type zinc finger.,similarity:Contains 2 RING-type zinc fingers.,subunit:Interacts with UBE2L3, UBE2L6 and LCMT2.,tissue specificity:Broadly expressed, with lowest levels in brain, spleen and thymus.,

---

**Function :**

caution:Lacks the His residue in the RING-type domain 2 that is one of the conserved features of the family.,domain:The RING-type zinc finger domain mediates binding to an E2 ubiquitin-conjugating enzyme.,function:E3 ubiquitin-protein ligase which accepts ubiquitin from E2 ubiquitin-conjugating enzymes UBE2L3 and UBE2L6 in the form of a thioester and then directly transfers the ubiquitin to targeted substrates such as LCMT2, thereby promoting their degradation. Induces apoptosis via a TP53/p53-dependent but caspase-independent mechanism.,pathway:Protein modification; protein ubiquitination.,PTM:Auto-ubiquitinated.,similarity:Belongs to the RBR family. RNF144 subfamily.,similarity:Contains 1 IBR-type zinc finger.,similarity:Contains 2 RING-type zinc fingers.,subunit:Interacts with UBE2L3, UBE2L6 and LCMT2.,tissue specificity:Broadly expressed, with lowest levels in brain, spleen and thymu

---

**Subcellular Location :**

Mitochondrion membrane ; Single-pass membrane protein . Cytoplasm . Mostly cytosolic, accumulates in submitochondrial domains specifically upon apoptosis induction, in synchrony with BAX activation.

---

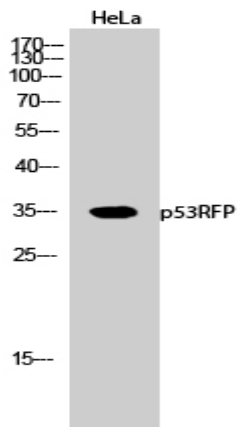
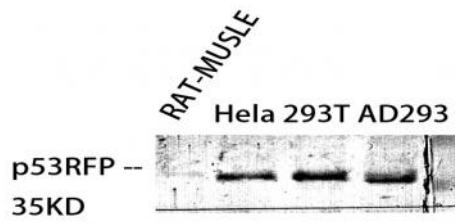
**Expression :**

Broadly expressed, with lowest levels in brain and thymus, and highest levels detectable in heart, ovary and testis.

---

## Products Images

Western Blot analysis of various cells using p53RFP Polyclonal Antibody



Western Blot analysis of HeLa cells using p53RFP Polyclonal Antibody