

## PAK5 Polyclonal Antibody

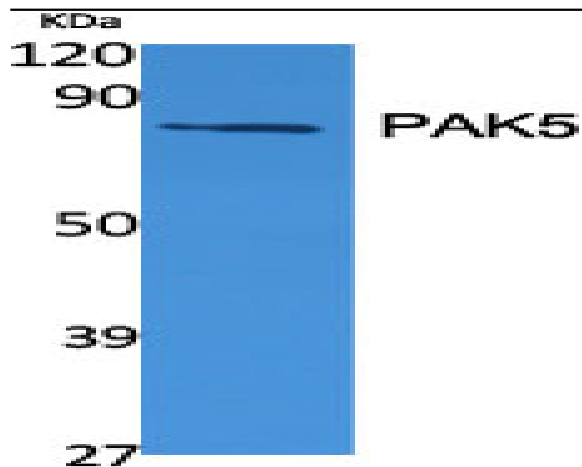
|                              |  |
|------------------------------|--|
| <b>Catalog No :</b>          | YT3573   |
| <b>Reactivity :</b>          | Human;Mouse;Rat  |
| <b>Applications :</b>        | WB;IHC;IF;ELISA  |
| <b>Target :</b>              | PAK5   |
| <b>Fields :</b>              | >>ErbB signaling pathway;>>Ras signaling pathway;>>Axon guidance;>>Focal adhesion;>>T cell receptor signaling pathway;>>Regulation of actin cytoskeleton;>>Human immunodeficiency virus 1 infection;>>Renal cell carcinoma |
| <b>Gene Name :</b>           | PAK7   |
| <b>Protein Name :</b>        | Serine/threonine-protein kinase PAK 7  |
| <b>Human Gene Id :</b>       | 57144  |
| <b>Human Swiss Prot No :</b> | Q9P286   |
| <b>Mouse Gene Id :</b>       | 241656   |
| <b>Mouse Swiss Prot No :</b> | Q8C015   |
| <b>Rat Gene Id :</b>         | 311450   |
| <b>Rat Swiss Prot No :</b>   | D4A280   |
| <b>Immunogen :</b>           | The antiserum was produced against synthesized peptide derived from human PAK7. AA range:661-710   |
| <b>Specificity :</b>         | PAK5 Polyclonal Antibody detects endogenous levels of PAK5 protein.  |
| <b>Formulation :</b>         | Liquid in PBS containing 50% glycerol, 0.5% BSA and 0.02% sodium azide.  |
| <b>Source :</b>              | Polyclonal, Rabbit,IgG   |

---

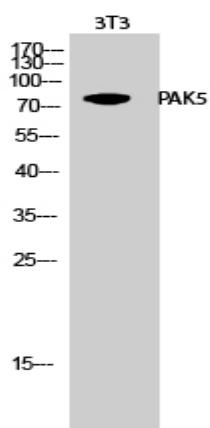
|                               |   |
|-------------------------------|---|
| <b>Dilution :</b>             | WB 1:500 - 1:2000. IHC 1:100 - 1:300. ELISA: 1:40000.. IF 1:50-200  |
| <b>Purification :</b>         | The antibody was affinity-purified from rabbit antiserum by affinity-chromatography using epitope-specific immunogen.   |
| <b>Concentration :</b>        | 1 mg/ml   |
| <b>Storage Stability :</b>    | -15°C to -25°C/1 year(Do not lower than -25°C)  |
| <b>Observed Band :</b>        | 80kD  |
| <b>Cell Pathway :</b>         | ErbB_HER;Axon guidance;Focal adhesion;T_Cell_Receptor;Regulates Actin and Cytoskeleton;Renal cell carcinoma;  |
| <b>Background :</b>           | The protein encoded by this gene is a member of the PAK family of Ser/Thr protein kinases. PAK family members are known to be effectors of Rac/Cdc42 GTPases, which have been implicated in the regulation of cytoskeletal dynamics, proliferation, and cell survival signaling. This kinase contains a CDC42/Rac1 interactive binding (CRIB) motif, and has been shown to bind CDC42 in the presence of GTP. This kinase is predominantly expressed in brain. It is capable of promoting neurite outgrowth, and thus may play a role in neurite development. This kinase is associated with microtubule networks and induces microtubule stabilization. The subcellular localization of this kinase is tightly regulated during cell cycle progression. Alternatively spliced transcript variants encoding the same protein have been described. [provided by RefSeq, Jul 2008], |
| <b>Function :</b>             | catalytic activity:ATP + a protein = ADP + a phosphoprotein.,function:The activated kinase acts on a variety of targets.,PTM:Autophosphorylated when activated by CDC42/p21.,similarity:Belongs to the protein kinase superfamily. STE Ser/Thr protein kinase family. STE20 subfamily.,similarity:Contains 1 CRIB domain.,similarity:Contains 1 protein kinase domain.,subunit:Interacts tightly with GTP-bound but not GDP-bound CDC42/p21 and RAC1.,tissue specificity:Predominantly expressed in brain.,   |
| <b>Subcellular Location :</b> | Mitochondrion. Cytoplasm. Nucleus. Shuttles between the nucleus and the mitochondria, and mitochondrial localization is essential for the role in cell survival.  |
| <b>Expression :</b>           | Predominantly expressed in brain.   |

---

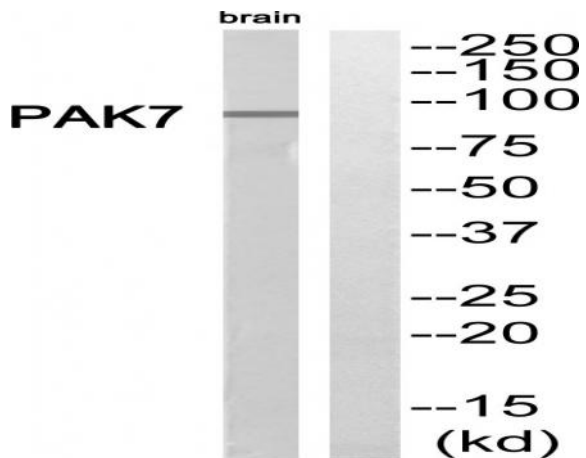
## Products Images



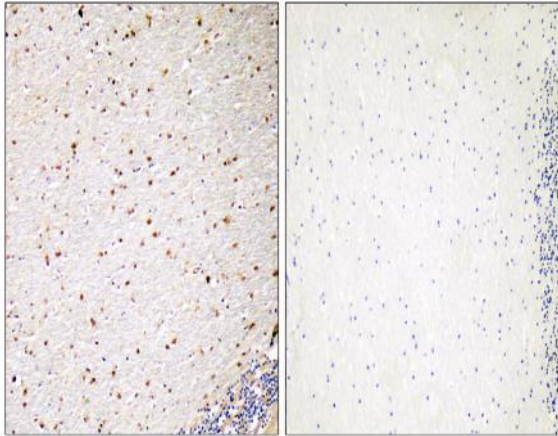
Western Blot analysis of various cells using PAK5 Polyclonal Antibody



Western Blot analysis of 3T3 cells using PAK5 Polyclonal Antibody



Western blot analysis of PAK7 Antibody. The lane on the right is blocked with the PAK7 peptide.



Immunohistochemistry analysis of paraffin-embedded human brain, using PAK7 Antibody. The lane on the right is blocked with the PAK7 peptide.