

Pbx 4 Polyclonal Antibody

Catalog No :	YT3613
Reactivity :	Human;Mouse
Applications :	IHC;IF;ELISA
Target :	Pbx 4
Gene Name :	PBX4
Protein Name :	Pre-B-cell leukemia transcription factor 4
Human Gene Id :	80714
Human Swiss Prot No :	Q9BYU1
Mouse Swiss Prot No :	Q99NE9
Immunogen :	Synthesized peptide derived from Pbx 4 . at AA range: 220-300
Specificity :	Pbx 4 Polyclonal Antibody detects endogenous levels of Pbx 4 protein.
Formulation :	Liquid in PBS containing 50% glycerol, 0.5% BSA and 0.02% sodium azide.
Source :	Polyclonal, Rabbit,IgG
Dilution :	IHC 1:100 - 1:300. ELISA: 1:20000.. IF 1:50-200
Purification :	The antibody was affinity-purified from rabbit antiserum by affinity-chromatography using epitope-specific immunogen.
Concentration :	1 mg/ml
Storage Stability :	-15°C to -25°C/1 year(Do not lower than -25°C)
Molecularweight :	41kD

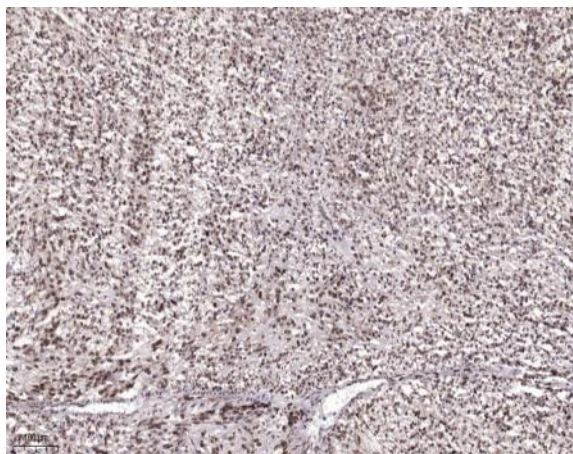
Background : This gene encodes a member of the pre-B cell leukemia transcription factor family. These proteins are homeobox proteins that play critical roles in embryonic development and cellular differentiation both as Hox cofactors and through Hox-independent pathways. The encoded protein contains a homeobox DNA-binding domain, but specific functions of the protein have not been determined. Alternatively spliced transcript variants have been observed for this gene. [provided by RefSeq, May 2011],

Function : similarity:Belongs to the TALE/PBX homeobox family.,similarity:Contains 1 homeobox DNA-binding domain.,

Subcellular Location : Nucleus .

Expression : Testis,

Products Images



Immunohistochemical analysis of paraffin-embedded human Colon cancer. 1, Antibody was diluted at 1:200(4° overnight). 2, Tris-EDTA,pH9.0 was used for antigen retrieval. 3,Secondary antibody was diluted at 1:200(room temperature, 45min).